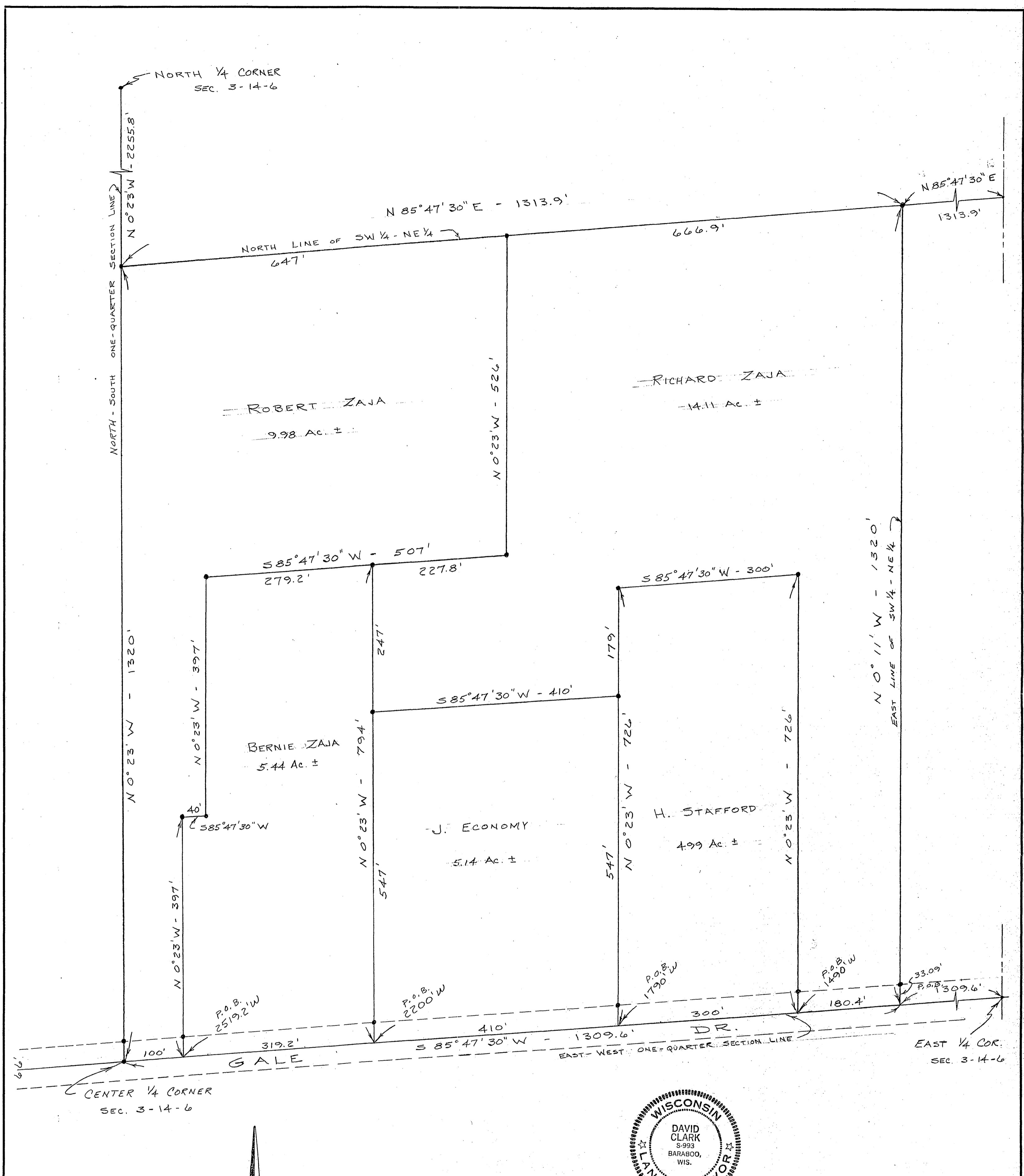


WISCONSIN  
 DAVID CLARK  
 5-993  
 BARABOO, WIS.  
 LAND SURVEYOR  
 JAN. 18, 1972

• - 3/4" x 24" IRON ROD  
 NOTE: R/W CORNERS SET AT 33.07' FROM CENTERLINE  
 THE ASPHALT PAVEMENT (GALE DR.) GENERALLY LIES SOUTH OF TRUE CENTERLINE

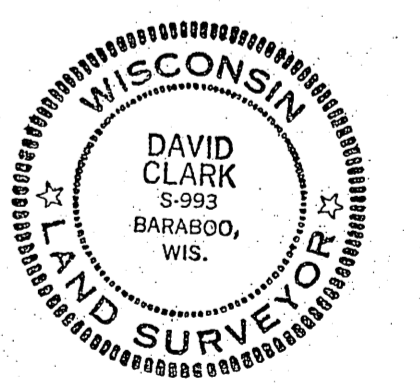
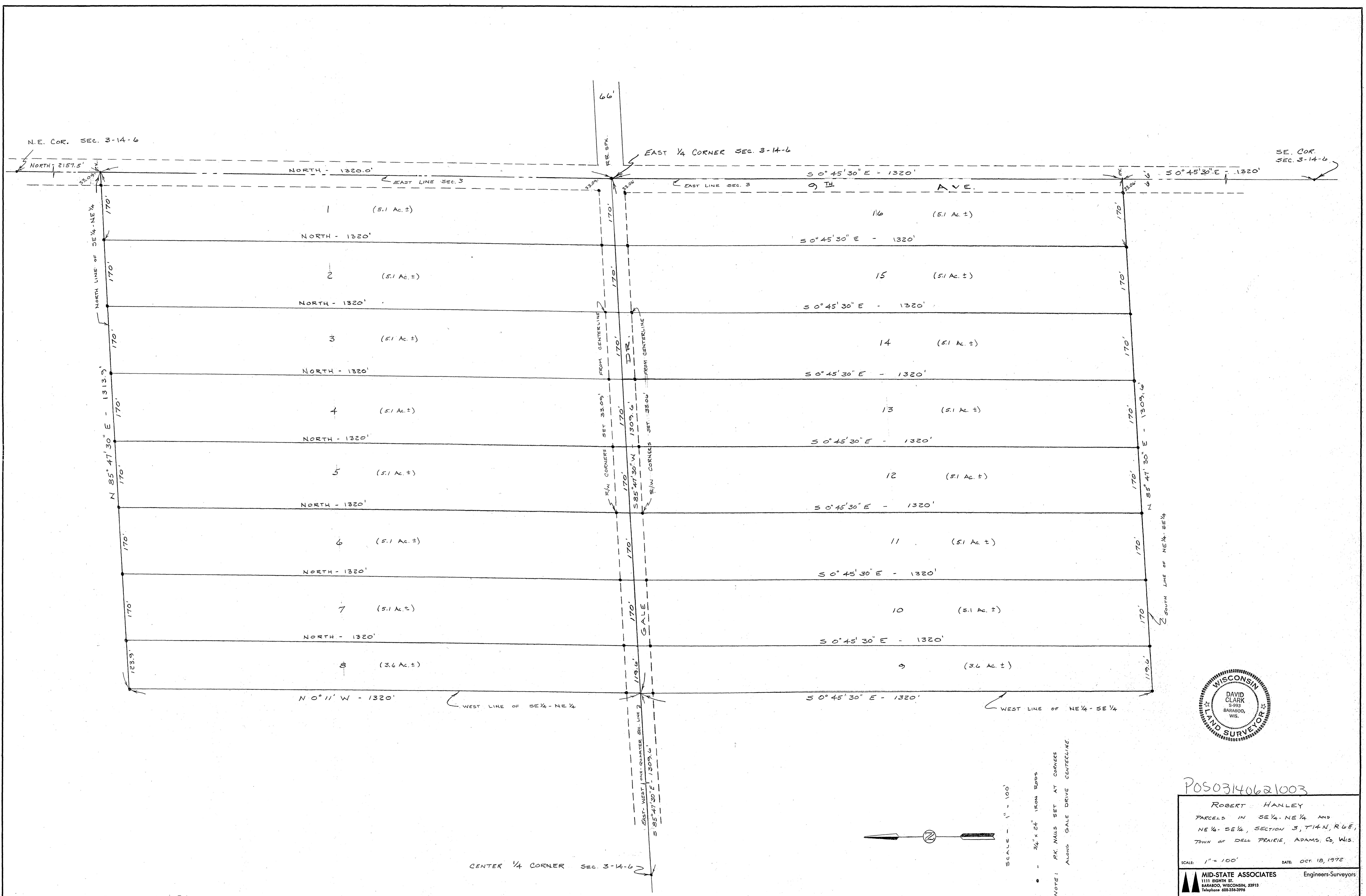
POS03140621003  
 PARCELS IN THE SW 1/4 - NW 1/4, SE 1/4 - NW 1/4, AND NW 1/4 - SW 1/4 SECTION 3, T14N, R6E, TOWN OF DELL PRAIRIE, ADAMS CO., WISC.  
 SCALE: 1" = 100' DATE: OCT. 18, 1972  
 MID-STATE ASSOCIATES Engineers-Surveyors  
 1111 EIGHTH ST. BARABOO, WISCONSIN, 53913 Telephone 608-254-2996  
 DRAWN BY: M.V.S. F.S. SHEET 1 OF 1  
 CHECKED BY: PROJ. 4921/5073 FILE



WISCONSIN  
 DAVID CLARK  
 5-993  
 BARABOO, WIS.  
 LAND SURVEYOR  
 JAN. 18, 1972

• - 3/4" x 24" IRON ROD  
 NOTE: R/W CORNERS SET AT 33.07' FROM CENTERLINE, UNLESS INDICATED OTHERWISE.  
 THE ASPHALT PAVEMENT (GALE DRIVE) GENERALLY LIES SOUTH OF TRUE CENTERLINE

POS03140621003  
 PARCELS IN THE SW 1/4 - NE 1/4 OF SECTION 3 T14N, R6E, TOWN OF DELL PRAIRIE ADAMS CO., WIS.  
 SCALE: 1" = 100' DATE: OCT. 18, 1972  
 MID-STATE ASSOCIATES Engineers-Surveyors  
 1111 EIGHTH ST. BARABOO, WISCONSIN, 53913 Telephone 608-254-2996  
 DRAWN BY: M.V.S. F.S. SHEET 1 OF 1  
 CHECKED BY: PROJ. 4921 FILE



POS03140621003

ROBERT HANLEY  
 PARCELS IN SE 1/4 - NE 1/4 AND  
 NE 1/4 - SE 1/4, SECTION 3, T14N, R6E,  
 TOWN OF DELL PRAIRIE, ADAMS CO, WIS.

SCALE: 1" = 100' DATE: OCT 18, 1972

MID-STATE ASSOCIATES Engineers-Surveyors  
 1111 BOHRN ST.  
 BARABOO, WISCONSIN, 53913  
 Telephone 608-356-3996

DRAWN BY M.J.S. F.B. SHEET 1 OF 1  
 CHECKED BY PROJ. 4945 FILE

SCALE - 1" = 100'  
 3/4" x 2 1/4" IRON RODS  
 NOTE: PK NAILS SET AT CORNERS  
 ALONG GALE DRIVE CENTERLINE



POS03140621003