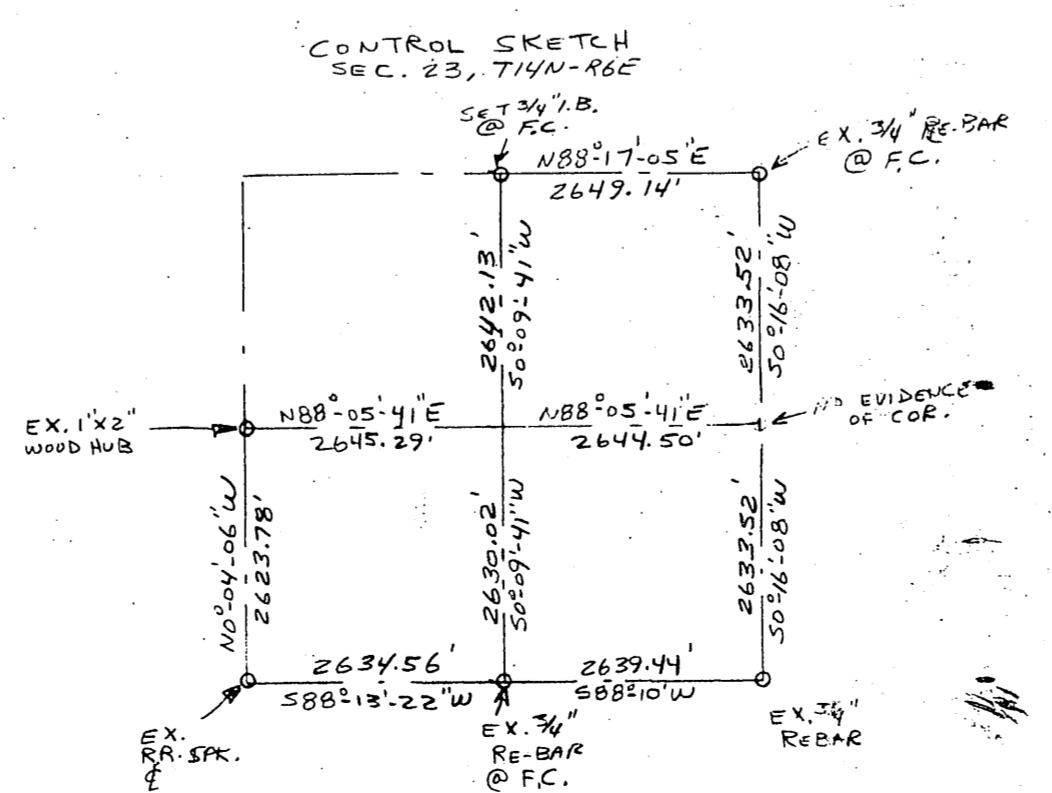


33' EAST OF EX. 3/4\"/>

5/4 COR. SECTION 23 FOR 7\"/>

LEGEND
0.3/4\"/>



Frederick W. Walsh
7-17-74

NO.	DATE	REVISION	BY

SURVEY OF PARCELS
FOR
HAUSON WALSH
LOCATED IN THE 5/4 SW/4, SECTION 23,
T14N, R6E, TOWN OF DEAL PRAIRIE,
ADAMS COUNTY, WISCONSIN

SCALE: 1"=100' DATE: JULY, 1974

MID-STATE ASSOCIATES, INC. ENGINEERS-ARCHITECT SURVEYORS
1111 EIGHTH ST.
BARABOIS, WISCONSIN 53913
Phone: (608) 356-3996

DRAWN BY: LES F.B. SHEET: 22-66-39
CHECKED BY: F.M.C. PROJ.: 2229 FILE: 22-66-39

POS23H0231001