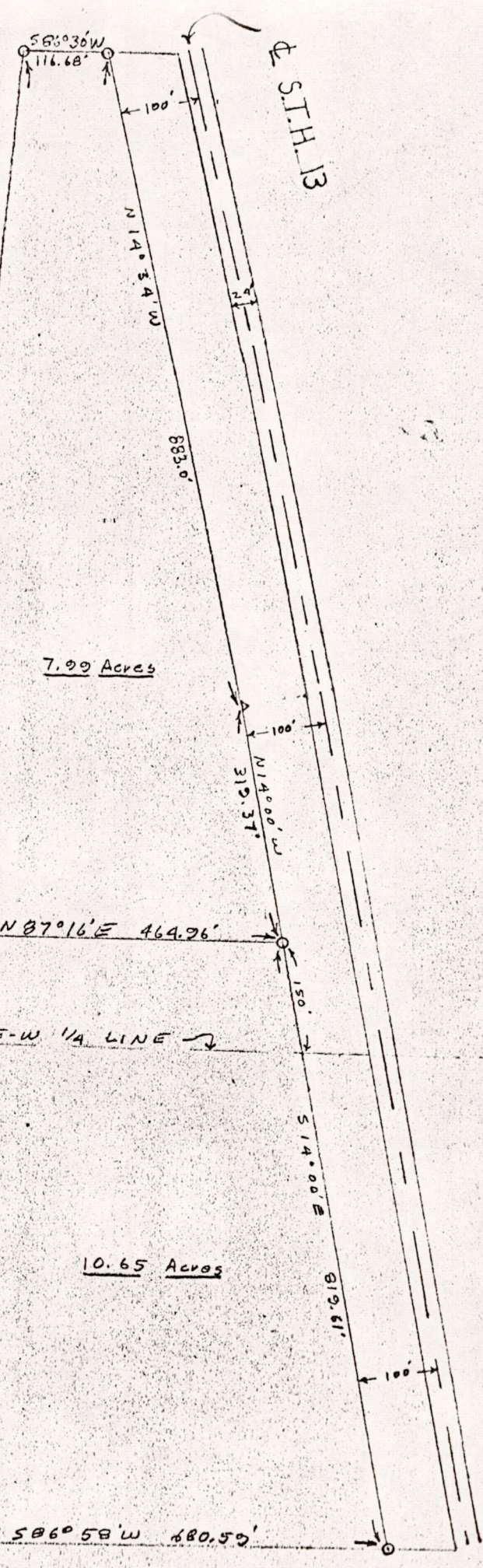
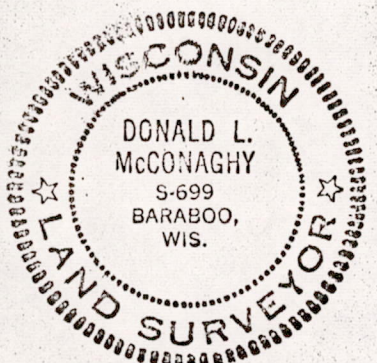




1" = 200'
0 = 3/4" rod



CONCRETE MONUMENT
SOUTH WEST CORNER OF
NORTHEAST 1/4 SEC. 34
T14N, R6E



Donald L. McConaghy

BACK CORNER OF CONCRETE
FORM 151.93' WEST
OF CORNER

PSS 34140621003