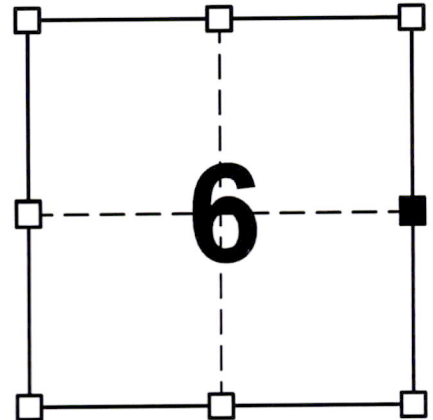


# ADAMS COUNTY CERTIFIED U.S. PUBLIC LAND SURVEY MONUMENT RECORD

DATUM: NAD 83 (1991)	ADAMS COUNTY COORDINATES	
CONTROL: COMBINATION OF GPS AND CONVENTIONAL FIELD CONTROL	NORTH	130,058.49'
	EAST	562,562.59'

*THE EAST QUARTER CORNER OF SECTION 6,  
TOWN ~~15~~ NORTH, RANGE 7 EAST, TOWN OF  
DELL PRAIRIE, ADAMS COUNTY, WISCONSIN*



SECTION 6  
TOWN ~~15~~ NORTH 14 GPR  
RANGE 7 EAST

(A) IDENTIFY THE CORNER BY REFERENCE TO THE U.S. PUBLIC LAND SURVEY SYSTEM

■ = CORNER MONUMENT RESTORED

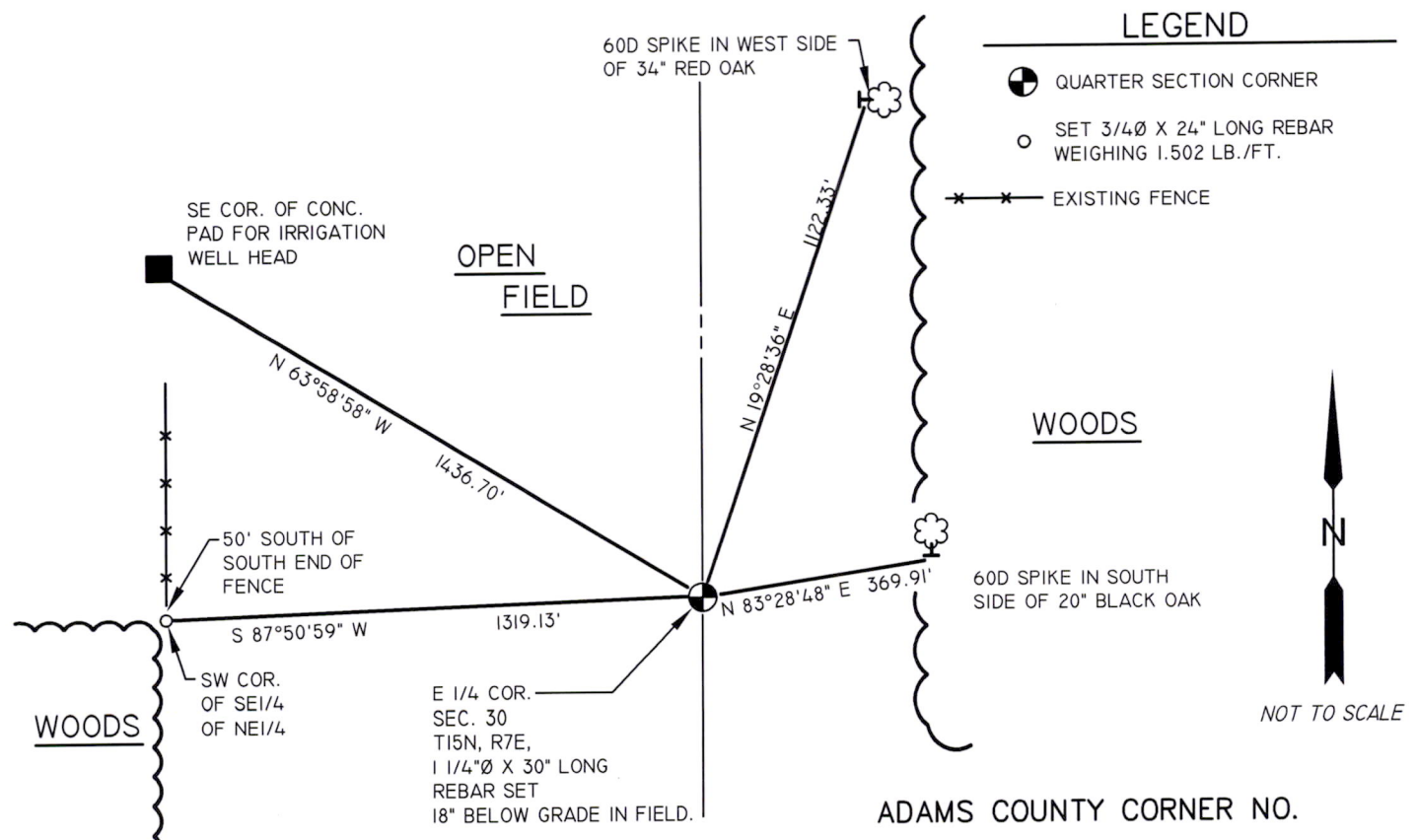
WITNESS TO CORNER LOCATION:

- TODD T. RUMMLER
- TERRY M. PREM
- JASON A. PELOCK

(B) DESCRIBE ANY RECORD EVIDENCE, MONUMENT EVIDENCE, OCCUPATIONAL EVIDENCE, TESTIMONIAL EVIDENCE OR ANY OTHER MATERIAL EVIDENCE YOU CONSIDERED, AND WHETHER THE MONUMENT WAS FOUND OR PLACED.

*FRED ZIETLOW DETERMINED THE LOCATION OF THIS MONUMENT BY SINGLE PROPORTIONATE MEASUREMENT AS SHOWN ON A SECTION SUMMARY DATED 8-24-77, BUT NOTES HE DID NOT SET A MONUMENT. GREGORY RHINEHART SET THIS CORNER IN 12-10-79 BASED ON ZIETLOW'S SECTION SUMMARY. RHINEHART ALSO SET TIES AND FILED A TIE SHEET. THE CORNER FALLS IN AN OPEN FIELD. I SEARCHED FOR RHINEHART'S MONUMENT AND TIES BUT DID NOT FIND THEM. I PLACED THE MONUMENT ON A STRAIGHT LINE BETWEEN THE NORTHEAST CORNER AND SOUTHWEST CORNER OF SECTION 6 USING PROPORTIONATE MEASUREMENTS BASED ON RHINEHART'S TIE SHEET INFORMATION. I ALSO ESTABLISHED NEW TIES AS SHOWN. THE REBAR IS BURIED 18" BELOW GRADE TO PROTECT IT FROM FARM MACHINERY.*

(C) IN THE PLAN VIEW DRAWING BELOW, PROVIDE REFERENCE TIES TO AT LEAST 4 WITNESS MONUMENTS OR, IF THE LOCATION IS WITHIN A MUNICIPALITY, TO AT LEAST 2 WITNESS MONUMENTS. (WITNESS MONUMENTS SHALL BE MADE ON CONCRETE, NATURAL STONE, IRON, OR OTHER EQUALLY DURABLE MATERIAL.) DESCRIBE WITNESS MONUMENTS.



mis06140700001

(D) DESCRIBE ANY MATERIAL DISCREPANCY BETWEEN THE LOCATION OF THE CORNER AS RESTORED OR REESTABLISHED AND THE LOCATION OF THAT CORNER AS PREVIOUSLY RESTORED OR REESTABLISHED BY DISTANCE AND DIRECTION. SHOW THE DISCREPANCY ON THE PLAN VIEW DRAWING UNDER (C), ABOVE. SHOW THE DISTANCES BETWEEN THE CORNER AS PREVIOUSLY RESTORED OR REESTABLISHED AND (1) THE CORNER AS RESTORED OR REESTABLISHED, AND (2) TO AT LEAST 2 OF THE WITNESS MONUMENTS AS SHOWN ON THE DRAWING IN (C), ABOVE.

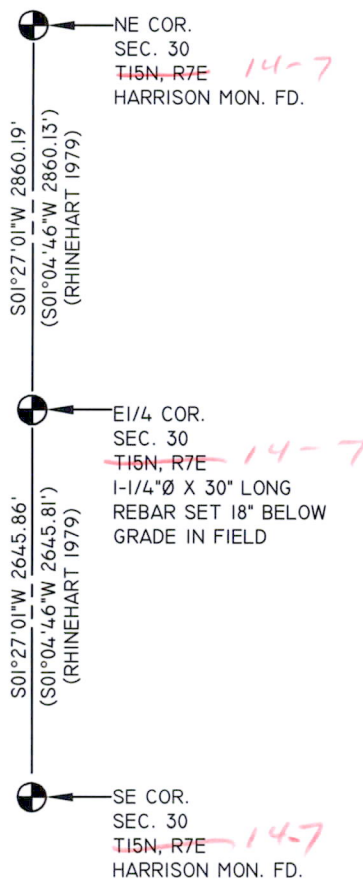
NONE

(E) WAS THE CORNER RESTORED THROUGH ACCEPTANCE OF (1) AN OBLITERATED EVIDENCE LOCATION, OR (2) A FOUND PERPETUATED LOCATION?

2.) A FOUND PERPETUATED LOCATION

(F & G) WAS THE CORNER REESTABLISHED THROUGH LOST CORNER PROPORTIONATE METHODS? IF SO SHOW THE METHOD, INCLUDING THE DIRECTION AND DISTANCE TO OTHER PUBLIC LAND SURVEY CORNERS USED AS EVIDENCE OR USED FOR PROPORTIONING IN DETERMINING THE CORNER LOCATION.

YES, SINGLE PROPORTIONATE MEASUREMENT.



AFFIX LAND SURVEYOR SEAL

(H) I, TODD T. RUMMLER, RLS-2443 CERTIFY THAT THE CORNER LOCATION SHOWN ON THIS RECORD WAS DETERMINED BY ME OR UNDER MY DIRECTION AND CONTROL AND THAT THIS U.S. PUBLIC LAND SURVEY MONUMENT RECORD IS CORRECT AND COMPLETE TO THE BEST OF MY KNOWLEDGE AND BELIEF.

*[Handwritten Signature]*

01-23-08

SIGNATURE

DATE

