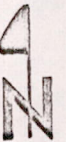
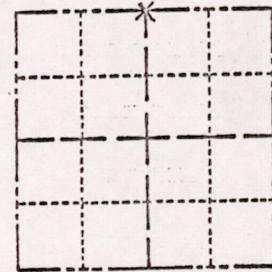


ADAMS COUNTY  
Survey Monument Record

TYPE OF MONUMENT: 30" HARRISON  
 STATE PLANE COORDINATES: N \_\_\_\_\_  
 E \_\_\_\_\_  
 ELEVATION — M.S.L. DATUM: \_\_\_\_\_  
 THETA ANGLE: \_\_\_\_\_  
 FIELD BOOK: \_\_\_\_\_ PAGE \_\_\_\_\_

CORNER NO. 751  
 SECTION 18  
 TOWN 14-N  
 RANGE 7-E



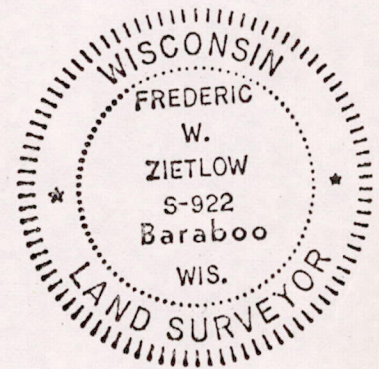
LOCATION  
 (Indicated by 'X')

BASIS FOR MONUMENT LOCATION

(Use reverse side if necessary)

Show info such as: History of corner, with reference to Vol. and pg, dates, surveyor; exact description of monument replaced; if location computed, by taped or EDM traverse; landowner remarks, etc.

SEAL:



FOUND STONE AT FENCE CORNER. FIT TRANSIT TAPE TRAVERSE OF SECTION GOOD. CHECKED CO. SURVEY RECORDS AND NO RESURVEYS WERE ON FILE.

10-29-76  
 GR + Dct1  
 OK

CERTIFIED CORRECT:

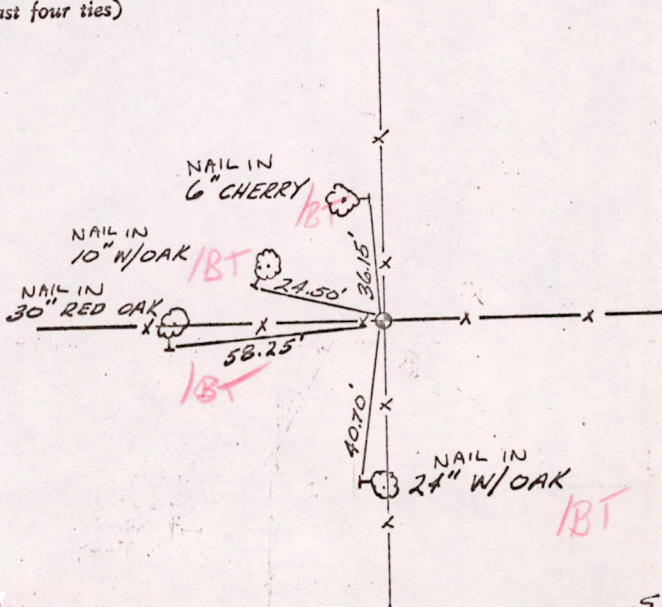
Frederic W. Zietlow

Registered Land Surveyor

DATE: JULY 31, 1975

TIE SKETCH

(Show at least four ties)



pretty small for a marker ✓

STONE WAS  $2\frac{1}{2} \times 2\frac{1}{2} \times 6$  POINTED SAND STONE

MIS18140700001