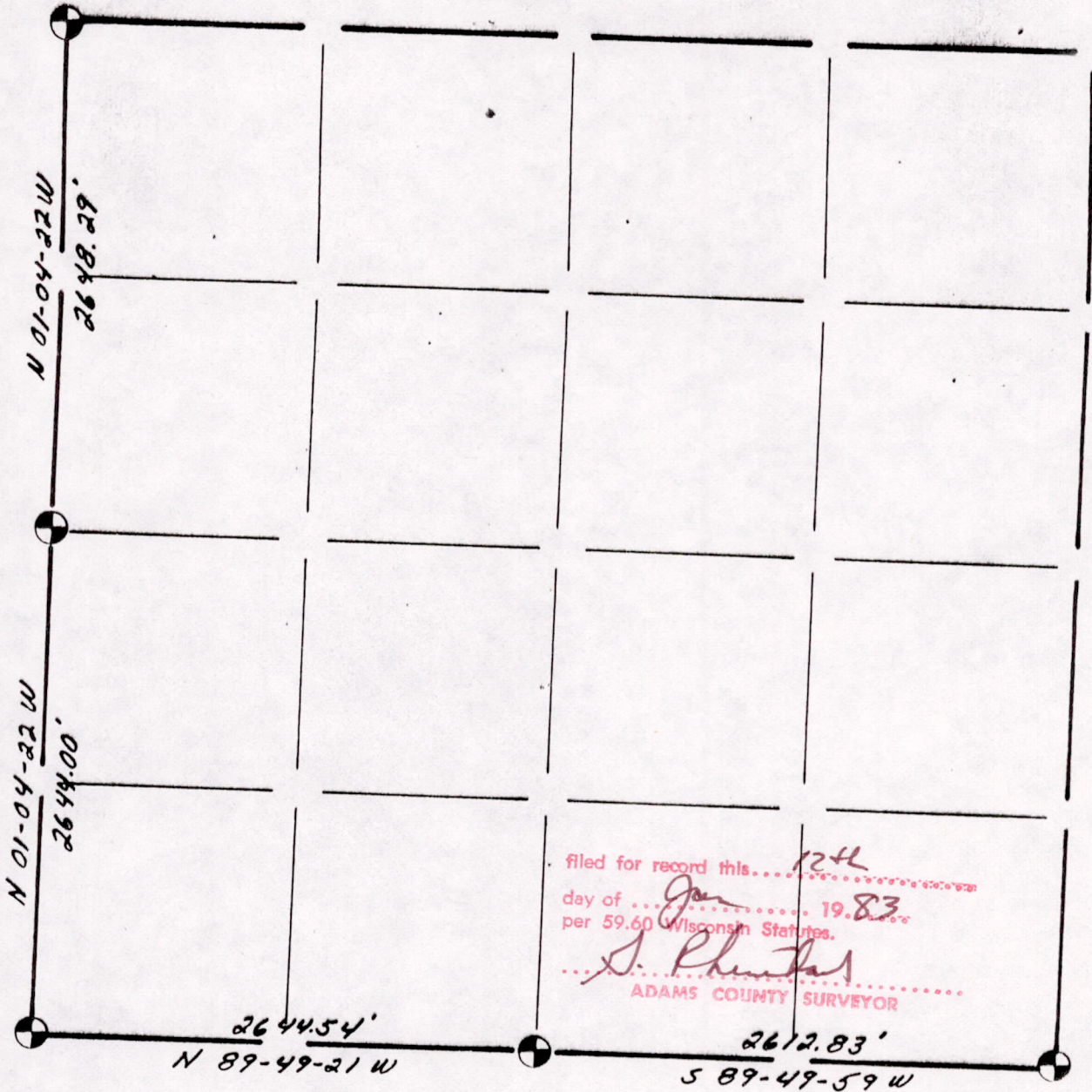





SECTION SUMMARY AND INDEX

27 - 14 - 7
SECTION TOWN RANGE



filed for record this... 12th ...
day of ... Jan ... 19.83 ...
per 59.60 Wisconsin Statutes.
S. R. ...
ADAMS COUNTY SURVEYOR

LEGEND

-  HARRISON CAST IRON MONUMENT.
-  STONE OR CONCRETE MONUMENT
-  OTHER _____
- _____
- _____

Kiedrowski Engineering, Inc.
4340 80th Street South (Kollner)
Wisconsin Rapids, WI 54494

Sec 27 14 07 00000