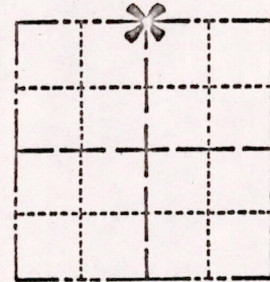


ADAMS COUNTY

Survey Monument Record

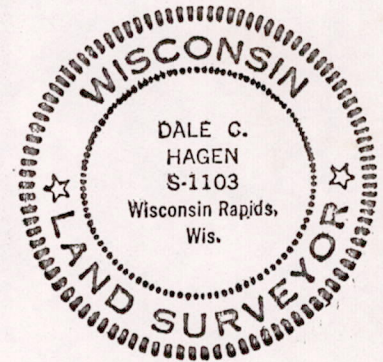
TYPE OF MONUMENT: Standard Harrison
STATE PLANE COORDINATES: N _____
E _____
ELEVATION — M.S.L. DATUM: _____
THETA ANGLE: _____
FIELD BOOK: _____ PAGE _____

CORNER NO. 835
SECTION 24
TOWN 15
RANGE 6



LOCATION
(Indicated by 'X')

SEAL:



BASIS FOR MONUMENT LOCATION

(Use reverse side if necessary)

Show info such as: History of corner, with reference to Vol. and pg, dates, surveyor; exact description of monument replaced; if location computed, by taped or EDM traverse; landowner remarks, etc.

Ran EDM/transit traverse around Sections 19 and 30 of Town 15 North, Range 6 East, and to adjacent government corners.

Found 1/2" Iron bar with the search area. Bar was used by Mid-States Assoc. in a survey in 13-15-5.

Accepted same as corner and remonumented,

CORNER CHECK
TIES IN & GOOD
Mar. 31, 1976
GR. SDS
MEASURED

CERTIFIED CORRECT:

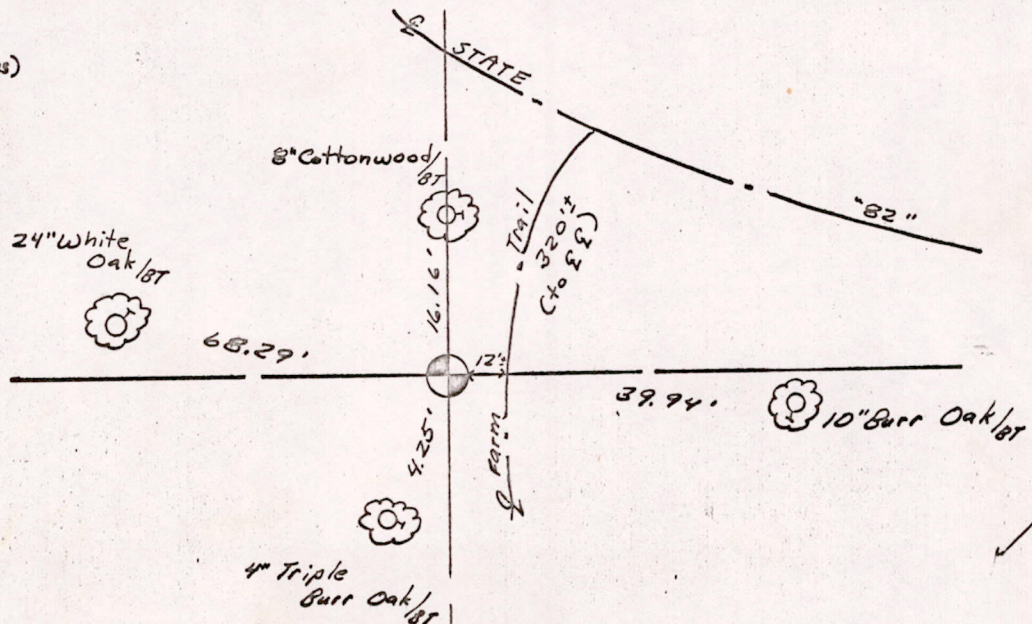
Dale C. Hagen

Registered Land Surveyor

DATE: December 2, 1975

TIE SKETCH

(Show at least four ties)



MIS 24150500001