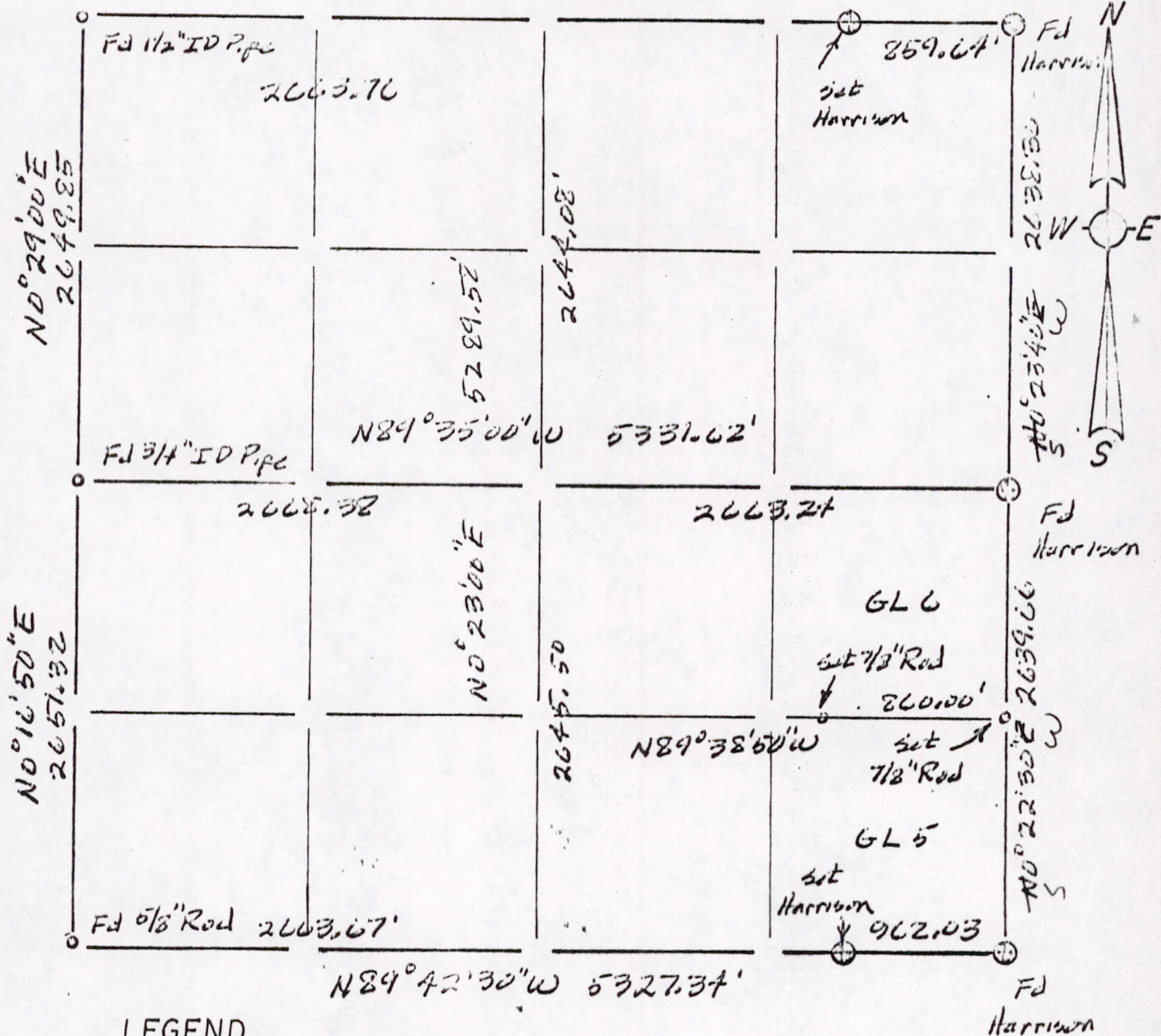


S ~~N~~ 89° 27' 40" ^E 5327.53'

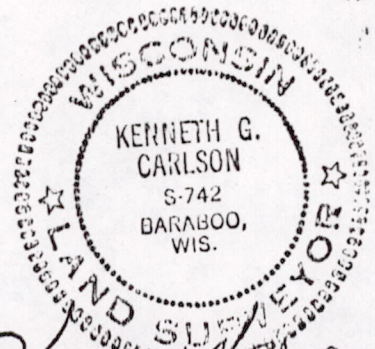


LEGEND

- ⊕ - Harrison cast iron monument.
- - Stone or concrete monument.
- ⊙ - Other

Rounded to nearest 10"
closure - 1 part per 92,462.15
 59
 9/16/60

Sec 25 15 50 00002



Kenneth G. Carlson
 Nov 4, 1978