

ADAMS COUNTY

Survey Monument Record

TYPE OF MONUMENT: set top part of 30" Harrison

STATE PLANE COORDINATES: N _____

E _____

ELEVATION — M.S.L. DATUM: _____

THETA ANGLE: _____

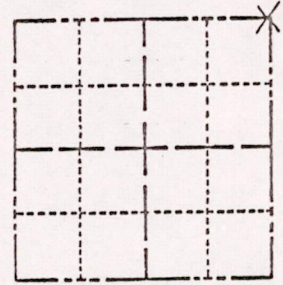
FIELD BOOK: 103 PAGE 135

CORNER NO. 133

SECTION 13

TOWN 15

RANGE 6



LOCATION
(Indicated by 'X')

BASIS FOR MONUMENT LOCATION

(Use reverse side if necessary)

Show info such as: History of corner, with reference to Vol. and pg, dates, surveyor; exact description of monument replaced; if location computed, by taped or EDM traverse; landowner remarks, etc.

SEAL:

Set top-part of a 30" Harrison monument on top of bedrock on May 17, 1972 by Sam T. Mullen R.L.S. 981

Everything O.K. - 4-23-76 RN-55

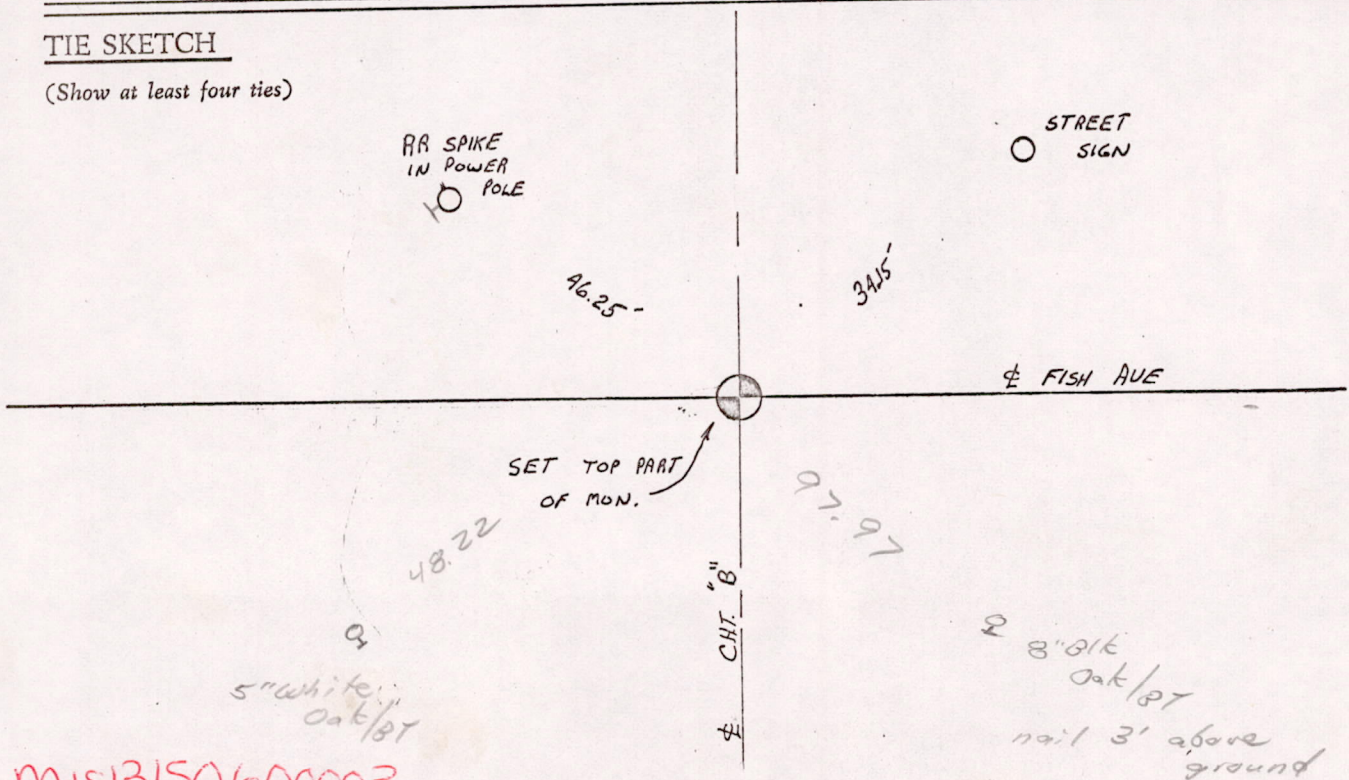
CERTIFIED CORRECT:

Registered Land Surveyor

DATE: _____

TIE SKETCH

(Show at least four ties)



MISB150600003