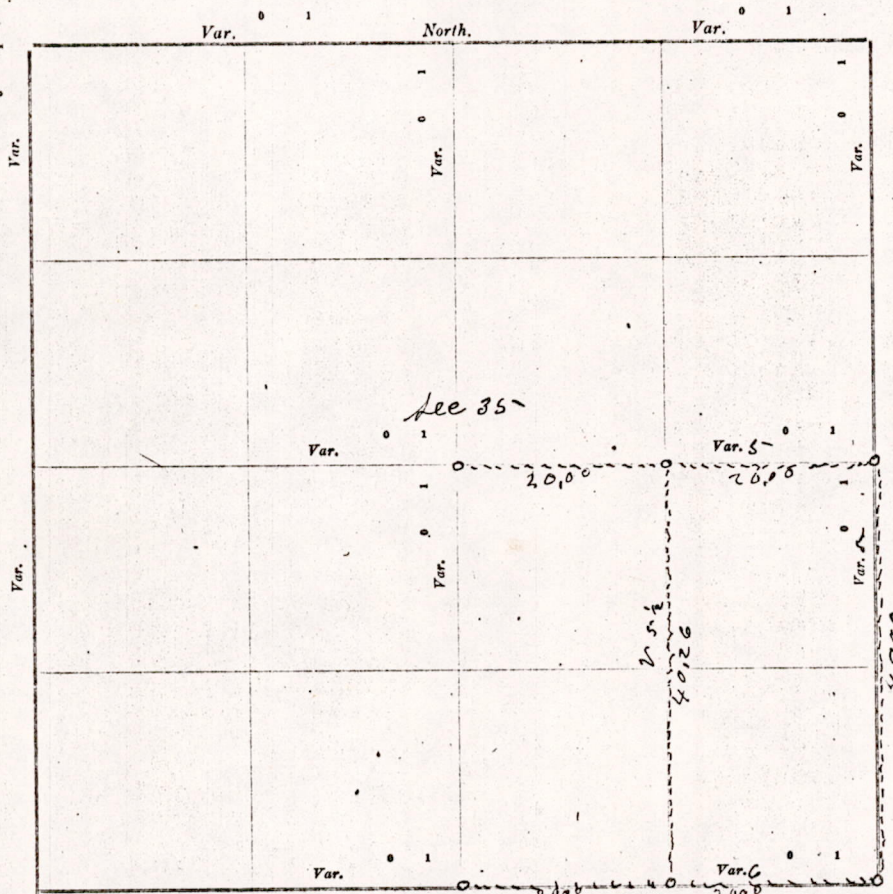


CERTIFICATE OF SURVEY.

STATE OF WISCONSIN, } ss. M. L. Smith Surveyor, in and for the County and State aforesaid, do
ADAMS COUNTY.

hereby certify that I have surveyed and subdivided Section 35 Township 15 North of Range 6 East of 4th Principal Meridian, as represented by the courses and distances on the following plat, and annexed field-notes of survey:

Established the center of the section at the point of intersection of straight quarter lines.
Established all quarter-quarter corners upon the section boundary at proportional distances between known section and quarter section corners, according to the original field-notes of the Government survey.
Established all lost corners at proportionate distances between known corners, according to original field-notes of the Government survey:



Plat of Section 35, Township 15 North, Range 6 East of 4th Principal Meridian. Scale, 80 chains to 6 inches. The figures in red ink are the lengths of the lines as stated in the field-notes of the Government survey.

Declination of the Magnetic Meridian from the True Meridian _____ East.

Surveyed and subdivided May 2 A. D. 1907, in accordance with the State Laws and Instructions of the Commissioner of the General Land Office, and recorded on pages _____ of Register in the County Surveyor's office.

WITNESS my hand this 2nd day of May A. D. 1907.

M. L. Smith County Surveyor.

The above work was done for August Endthoff

DESCRIPTION

Township

N. B. - The variation

No.	DESCRIPTION
1	N. W. Sec. cor.
2	N. E. Sec. cor.
3	S. E. Sec. cor.
4	S. W. Sec. cor.
5	N. 1/4 Sec. cor.
6	E. 1/4 Sec. cor.
7	S. 1/4 Sec. cor.
8	W. 1/4 Sec. cor.
No.	SUBDIVISION
1	Center 1/4 Sec.
2	North 1/4-1/4
3	East 1/4-1/4 N
4	South 1/4-1/4 S
5	West 1/4-1/4 W
6	Center 1/4-1/4
7	North 1/4-1/4
8	East 1/4-1/4 N
9	South 1/4-1/4 S
10	Center 1/4-1/4
11	East 1/4-1/4 S
12	South 1/4-1/4
13	West 1/4-1/4 W
14	Center 1/4-1/4
15	South 1/4-1/4
16	West 1/4-1/4
17	Center 1/4-1/4

CHAIN

August Endthoff
Lew Endthoff

*Beginning town line
believed to be
Post on east
I believe to be
west at 5-2-
set by A. J. B.
40 chains & 2-
said said they
Beverage) an
south east co*

DESCRIPTION of Section, Quarter Section and Quarter quarter Section Corners of Section

Township _____ North, Range _____ East of _____ Principal Meridian.

N. B. - The variation of needle adopted in establishing corners is _____

No.	Government Corners.	Bearing Trees.	In. dia.	Courses they bear.	Links Distant.	Bearing Trees.	In. dia.	Courses they bear.	Links Distant.
1	N. W. Sec. cor. Identified								
2	N. E. Sec. cor. Identified								
3	S. E. Sec. cor. Identified								
4	S. W. Sec. cor. Identified								
5	N. ¼ Sec. cor. Identified								
6	E. ¼ Sec. cor. Identified	<i>new</i>		<i>Blk oak</i>	<i>20</i>			<i>N. 70 ½ W</i>	<i>209</i>
7	S. ¼ Sec. cor. Identified								
8	W. ¼ Sec. cor. Identified								
SUBDIVISION CORNERS.									
1	Center ¼ Sec. cor.								
2	North ¼-¼s N. W. qr.								
3	East ¼-¼s N. W. qr.								
4	South ¼-¼s N. W. qr.								
5	West ¼-¼s N. W. qr.								
6	Center ¼-¼s N. W. qr.								
7	North ¼-¼s N. E. qr.								
8	East ¼-¼s N. E. qr.								
9	South ¼-¼s N. E. qr.								
10	Center ¼-¼s N. E. qr.								
11	East ¼-¼s S. E. qr.								
12	South ¼-¼s S. E. qr.								
13	West ¼-¼s S. E. qr.								
14	Center ¼-¼s S. E. qr.								
15	South ¼-¼s S. W. qr.								
16	West ¼-¼s S. W. qr.								
17	Center ¼-¼s S. W. qr.								

NAMES OF SWORN ASSISTANTS.

CHAINMEN.

FLAGMEN.

AXMEN.

August Endthoff
Law Endthoff

MINUTES.

Beginning at the Post at the south east corner of section 35 on Town line, which corner was established by Gov Bearing stump which I believe to be correct, and ran North at 5-D-V 40 chains to the quarter Post on east side of section 35 which Post proven by one stump which I believe to have been Gov Bearing tree, made one new Bearing, then ran west at 5-D-V 40 chains, to Post at center of section said to have been set by A. J. Barrett, set Post at 20 chains, and ran south at 5-D-V 40 chains & 2.6 links & set 8th Post, then went west to where the parties said said they knew the quarter Post used to stand (although there was no Bearing) and ran East at 6-D-V. 40 chains and hit the Post at the south east corner of said section

M. G. Smith county Surveyor

MIS 3515060000