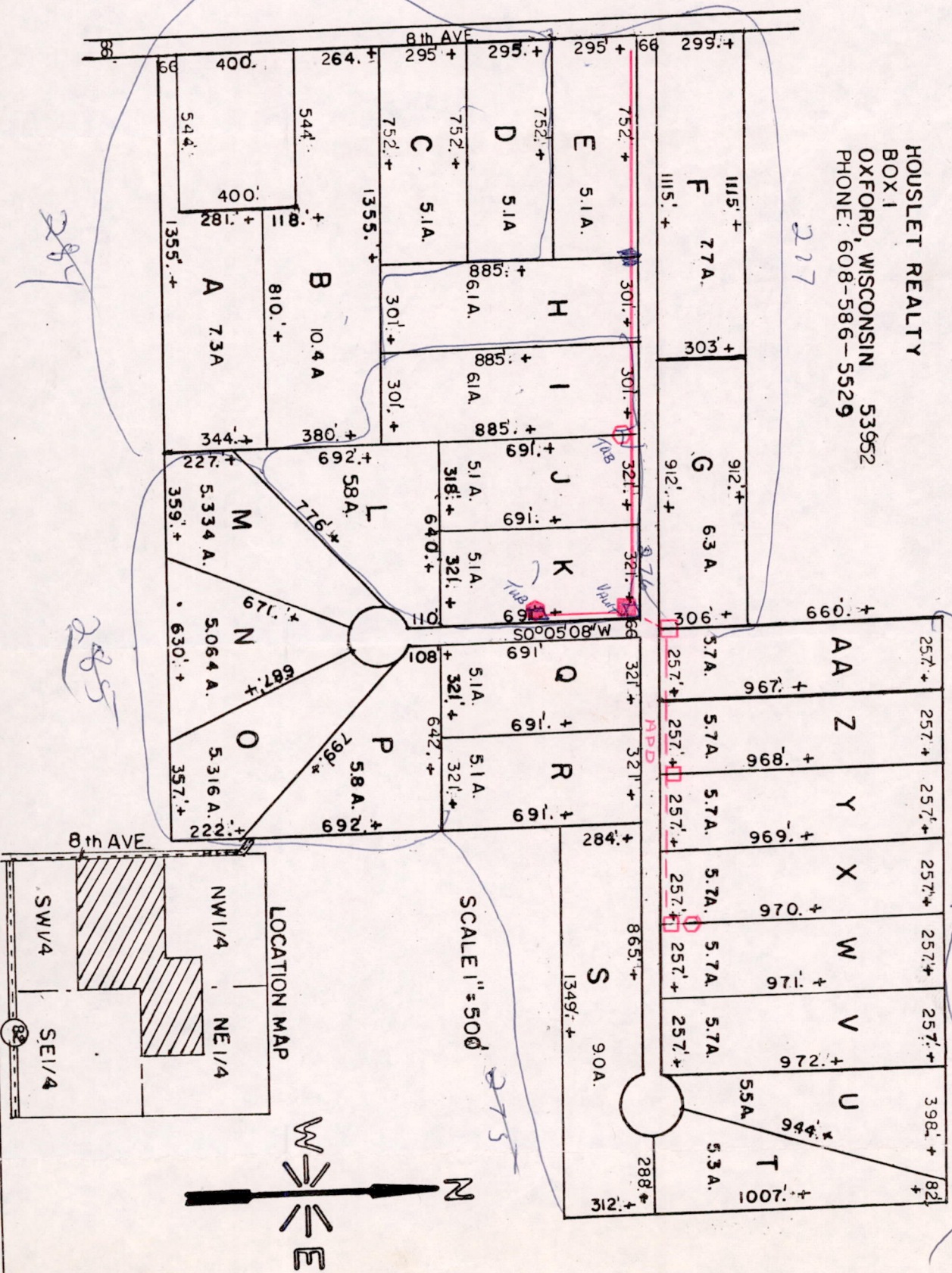


Neal Havelle Jr.
Oxford, Wis

RECEIVED NOV 27 1974

GLACIER GLEN
PART OF THE S 1/2 OF THE NW 1/4 & THE SW 1/4 OF THE NE 1/4
AND PART OF THE N 1/2 OF THE SW 1/4 SECTION 13 T15N R6E
TOWN OF SPRINGVILLE, ADAMS COUNTY, WISCONSIN.

HOUSLET REALTY
BOX 1
OXFORD, WISCONSIN 53952
PHONE: 608-586-5529



Pos 13150611004