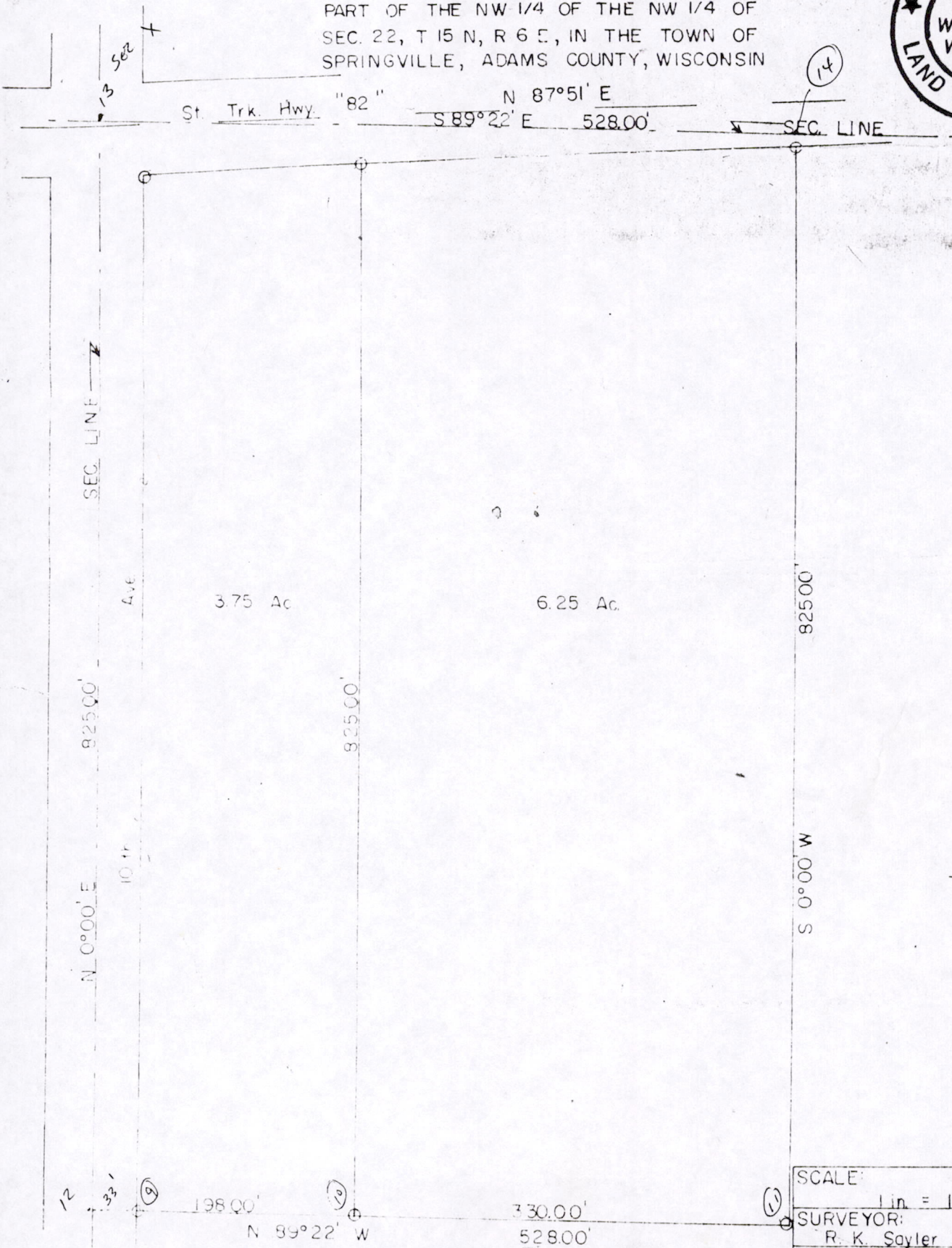


LUCILLE COLLINS

PART OF THE NW 1/4 OF THE NW 1/4 OF
 SEC. 22, T 15 N, R 6 E, IN THE TOWN OF
 SPRINGVILLE, ADAMS COUNTY, WISCONSIN



NOTE Distances and acreage given, are to the Sec. lines

SCALE:	1 in. = 100 ft.
SURVEYOR:	R. K. Saylor S-417
	August 11, 1970
	bk. 17 p. 126

Pos 22150621001