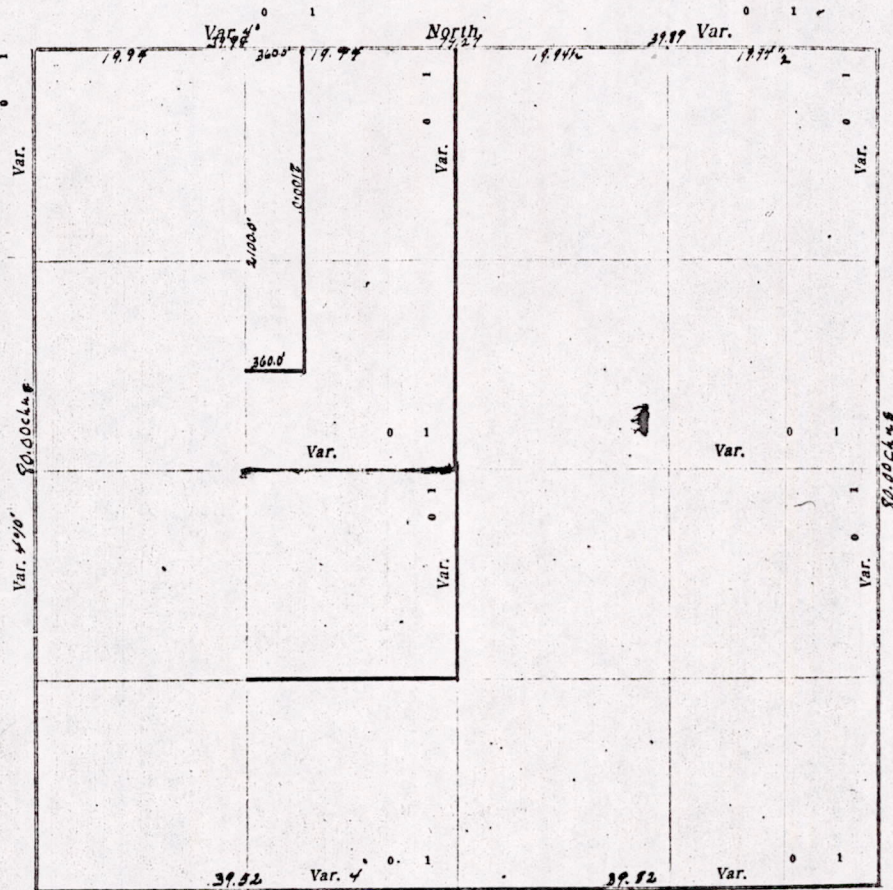


CERTIFICATE OF SURVEY.

STATE OF WISCONSIN, } ss. Raymond Phillips Surveyor, in and for the County and State of Wisconsin,
ADAMS COUNTY.

hereby certify that I have surveyed and subdivided Section 17 Township 15 North of Range 7 East of 4 Principal Meridian, as represented by the courses and distances on the following plat, and annexed field-notes of survey:

- Established the center of the section at the point of intersection of straight quarter lines.
- Established all quarter-quarter corners upon the section boundary at proportional distances between known section and quarter section corners, according to the original field-notes of the Government survey.
- Established all lost corners at proportionate distances between known corners, according to original field-notes of the Government survey.



Plat of Section 17, Township 15 North, Range 7 East of 4 Principal Meridian. Scale, 80 chains to 1 inches. The figures in red ink are the lengths of the lines as stated in the field-notes of the Government survey.

Declination of the Magnetic Meridian from the True Meridian 4° 13' East.

Surveyed and subdivided _____ A. D. 19 _____, in accordance with the State Laws and Instructions of the Commissioner of the General Land Office, and recorded on pages _____ of Register in the County Surveyor's office.

WITNESS my hand this 8 day of July A. D. 19 37.

Raymond Phillips Surveyor

Survey made by the request of John A Mc Gregor, County Highway Commissioner

MIS19150700001

