

# CERTIFICATE OF SURVEY.

STATE OF WISCONSIN, }  
ADAMS COUNTY. }

J. M. Smith

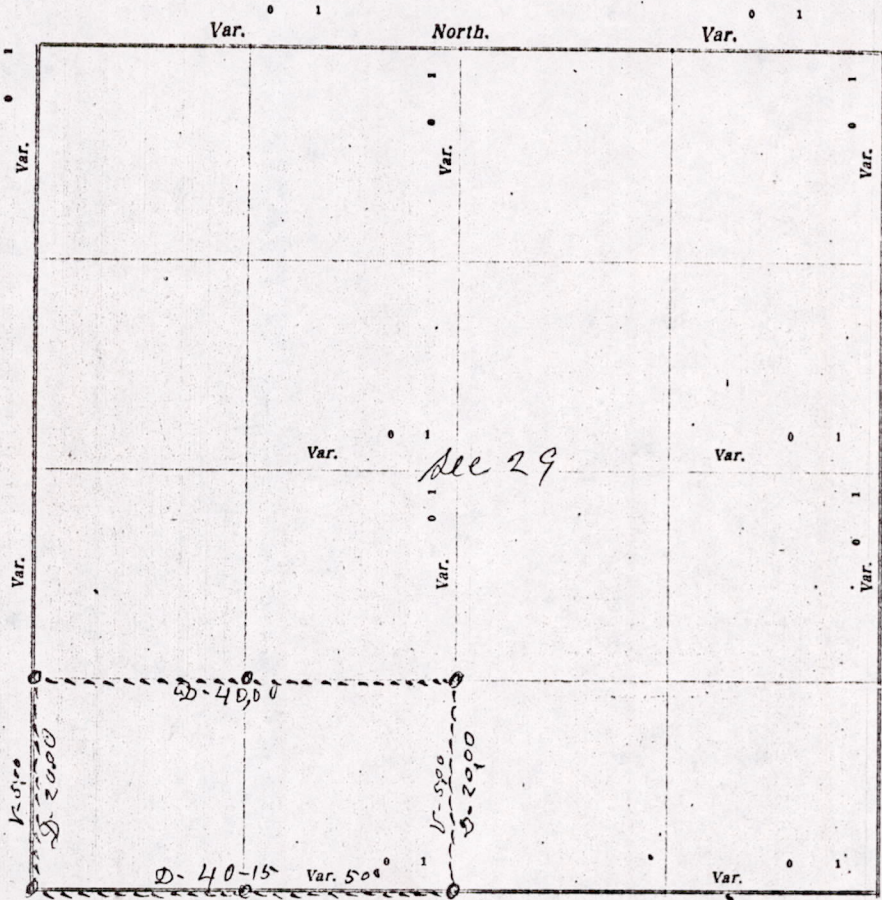
Surveyor, in and for the County and State aforesaid, do

hereby certify that I have surveyed and subdivided Section 29 Township 15 North of Range 7 East of 4th Principal Meridian, as represented by the courses and distances on the following plat, and annexed field-notes of survey:

Established the center of the section at the point of intersection of *straight* quarter lines.

Established all quarter-quarter corners upon the section boundary at proportional distances between known section and quarter section corners, according to the original field-notes of the Government survey.

Established all lost corners at proportionate distances between known corners, according to original field-notes of the Government survey:



Plat of Section 29, Township 15 North, Range 7 East of 4th Principal Meridian. Scale, 80 chains to 6 inches. The figures in red ink are the lengths of the lines as stated in the field-notes of the Government survey.

Declination of the Magnetic Meridian from the True Meridian \_\_\_\_\_ East.

Surveyed and subdivided 11<sup>th</sup> day of May A. D. 1915, in accordance with the State Laws and Instructions of the Commissioner of the General Land Office, and recorded on pages \_\_\_\_\_ of Register in the County Surveyor's office.

WITNESS my hand this 11<sup>th</sup> day of May A. D. 1915.

J. M. Smith Surveyor.

*The above work was done at the request of Frank P. Esch*

M1529150700001



DESCRIPTION of Section, Quarter Section and Quarter-quarter Section Corners of Section  
 Township \_\_\_\_\_ North, Range \_\_\_\_\_ East of \_\_\_\_\_ Principal Meridian.

N. B. The variation of needle adopted in establishing corners is \_\_\_\_\_

No.	Government Corners	Bearing Trees	In. dia.	Courses they bear	Links Distant	Bearing Trees	In. dia.	Courses they bear	Links Distant
1	N. W. Sec. cor. Identified								
2	N. E. Sec. cor. Identified								
3	S. E. Sec. cor. Identified								
4	S. W. Sec. cor. Identified	<i>new</i>		<i>Blk oak 11 N 27° W</i>	<i>11</i>				
5	N. 1/4 Sec. cor. Identified								
6	E. 1/4 Sec. cor. Identified								
7	S. 1/4 Sec. cor. Identified								
8	W. 1/4 Sec. cor. Identified								
<b>SUBDIVISION CORNERS.</b>									
1	Center 1/4 Sec. cor.								
2	North 1/4-1/4s N. W. qr.								
3	East 1/4-1/4s N. W. qr.								
4	South 1/4-1/4s N. W. qr.								
5	West 1/4-1/4s N. W. qr.								
6	Center 1/4-1/4s N. W. qr.								
7	North 1/4-1/4s N. E. qr.								
8	East 1/4-1/4s N. E. qr.								
9	South 1/4-1/4s N. E. qr.								
10	Center 1/4-1/4s N. E. qr.								
11	East 1/4-1/4s S. E. qr.								
12	South 1/4-1/4s S. E. qr.								
13	West 1/4-1/4s S. E. qr.								
14	Center 1/4-1/4s S. E. qr.								
15	South 1/4-1/4s S. W. qr.								
16	West 1/4-1/4s S. W. qr.								
17	Center 1/4-1/4s S. W. qr.								

**NAMES OF SWORN ASSISTANTS.**

CHAINMEN	FLAGMEN	AXMEN
<i>Frank P. Boon</i>		
<i>Robert Nimets</i>		

**MINUTES.**

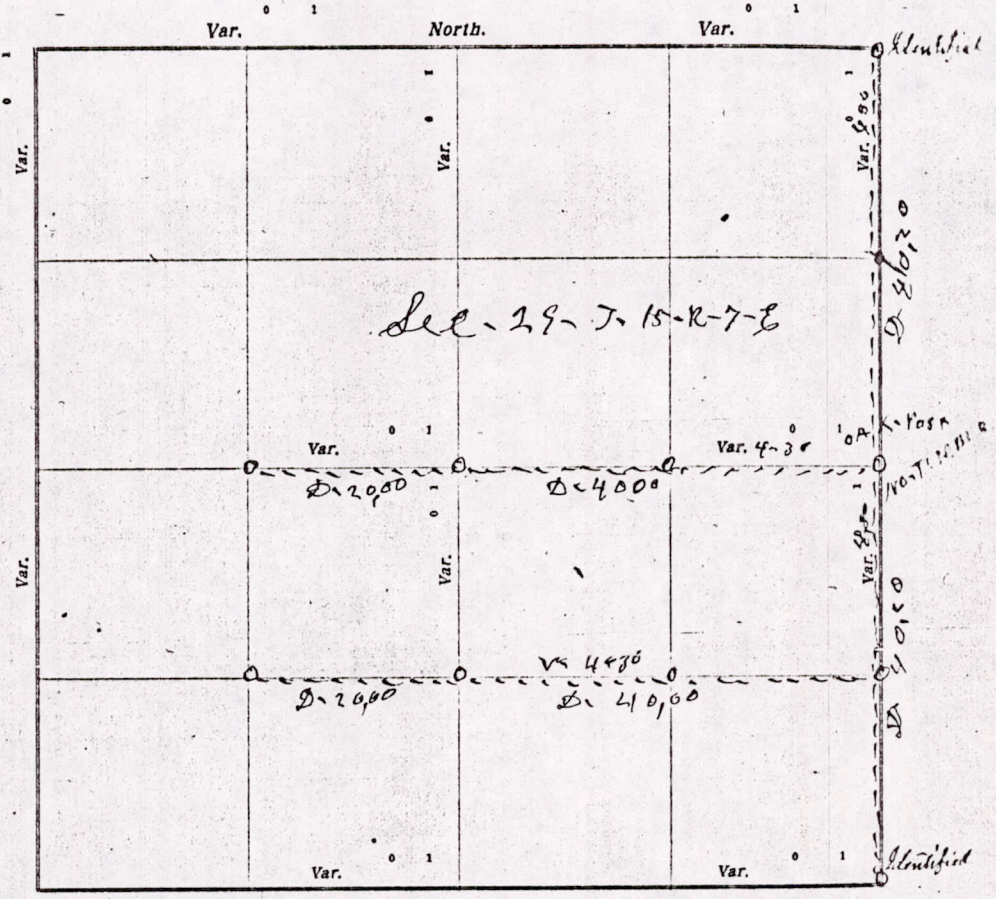
Commencing at the Identified quarter Post on the south side of section 29 T-15-R-7-E. and ran west on the section line at 5-2-V 20 chains & 15 links to the established S W. corner of the section. Then to our new bearing for this corner as shown above. Then ran North on the section line at 5-2-V 20 chains to the 8th Post (set by me 2 years before near Mr. Joseph's house). Then east on the 8th line 40 chains and set Post. Then went to the quarter Post on the north side of this section and ran North on the N & S quarter line at 5-2-V 20 chains to the Post set in running from the west.

*W. C. Smith County Surveyor*

*MIS 29150700001*

# CERTIFICATE OF SURVEY.

STATE OF WISCONSIN, } ss. M. L. Smith Surveyor, in and for the County and State aforesaid, do hereby certify that I have surveyed and subdivided Section 29 Township 15 North of Range 7 East of 4th Principal Meridian, as represented by the courses and distances on the following plat, and annexed field-notes of survey:  
 Established the center of the section at the point of intersection of straight quarter lines.  
 Established all quarter-quarter corners upon the section boundary at proportional distances between known section and quarter section corners, according to the original field-notes of the Government survey.  
 Established all lost corners at proportionate distances between known corners, according to original field-notes of the Government survey.



Plat of Section 29 Township 15 North, Range 7 East of 4th Principal Meridian. Scale, 80 chains to 6 inches. The figures in red ink are the lengths of the lines as stated in the field-notes of the Government survey.

Declination of the Magnetic Meridian from the True Meridian \_\_\_\_\_ East.  
 Surveyed and subdivided this 6th Day of September A. D. 1922 in accordance with the State Laws and Instructions of the Commissioner of the General Land Office, and recorded on pages \_\_\_\_\_ of Register in the County Surveyor's office.  
 WITNESS my hand this 24th day of September A. D. 1922

M. L. Smith County Surveyor.

*The above work was done at the request of Ben Glowinski*

DESCRIPTION of Section, Quarter Section and Quarter quarter Section Corners of Section

Township North, Range East of Principal Meridian.

N. B. - The variation of needle adopted in establishing corners is

No.	Government Corners.	Bearing Trees.	In. dia.	Courses they bear.	Links Distant.	Bearing Trees.	In. dia.	Courses they bear.	Links Distant.
1	N. W. Sec. cor. Indentified								
2	N. E. Sec. cor. Indentified								
3	S. E. Sec. cor. Indentified								
4	S. W. Sec. cor. Indentified								
5	N. 1/4 Sec. cor. Indentified								
6	E. 1/4 Sec. cor. Indentified								
7	S. 1/4 Sec. cor. Indentified								
8	W. 1/4 Sec. cor. Indentified								
SUBDIVISION CORNERS.									
1	Center 1/4 Sec. cor.								
2	North 1/4-1/4s N. W. qr.								
3	East 1/4-1/4s N. W. qr.								
4	South 1/4-1/4s N. W. qr.								
5	West 1/4-1/4s N. W. qr.								
6	Center 1/4-1/4s N. W. qr.								
7	North 1/4-1/4s N. E. qr.								
8	East 1/4-1/4s N. E. qr.								
9	South 1/4-1/4s N. E. qr.								
10	Center 1/4-1/4s N. E. qr.								
11	East 1/4-1/4s S. E. qr.								
12	South 1/4-1/4s S. E. qr.								
13	West 1/4-1/4s S. E. qr.								
14	Center 1/4-1/4s S. E. qr.								
15	South 1/4-1/4s S. W. qr.								
16	West 1/4-1/4s S. W. qr.								
17	Center 1/4-1/4s S. W. qr.								

NAMES OF SWORN ASSISTANTS.

CHAINMEN.	FLAGMEN.	AXMEN.
M. G. Joseph J. Mershak Chas. Garlock		

MINUTES.

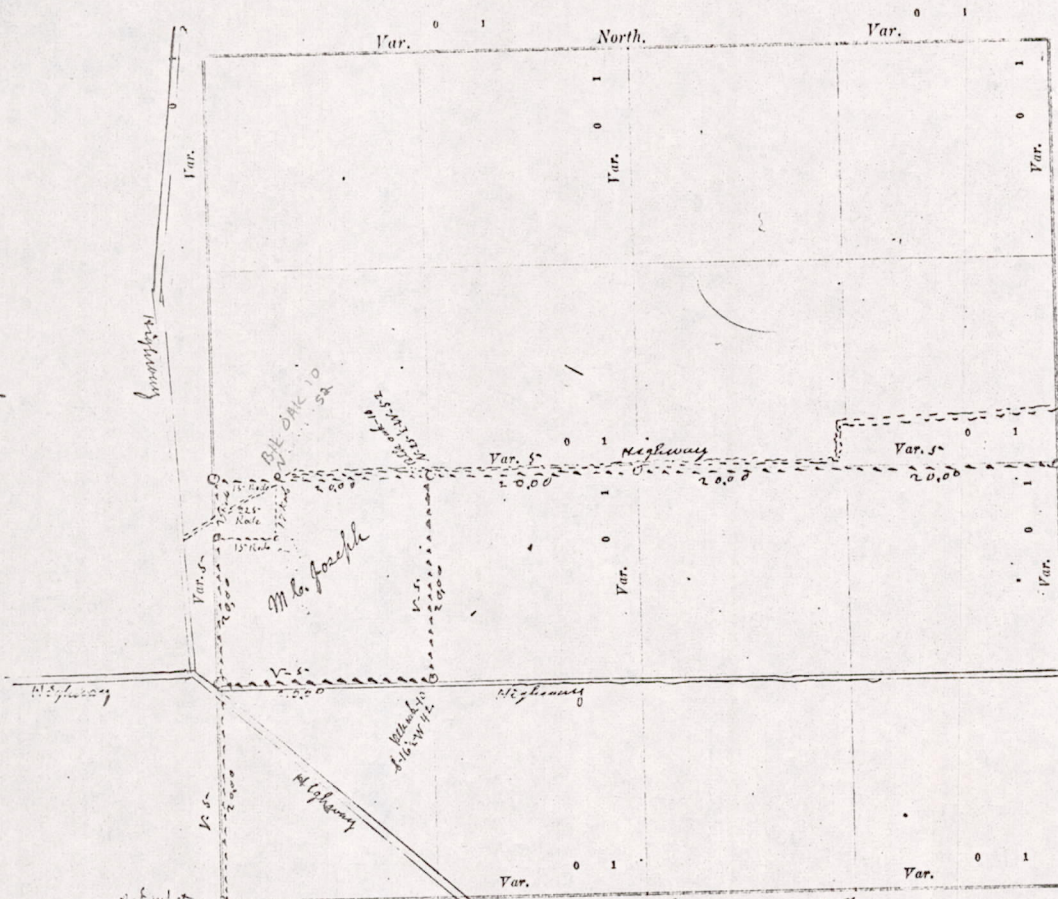
Starting at the Quarter Post on west side of section 32-2-15-R-7-E and Run North 20 chains to North West 32, set Post & stone. Then north at 5-D-V 20 chains & set Post, (near Mr Joseph's House) Then north same V. 20 chains to Quarter Post on west side of section (no bearing a Post) Then east at 5-D-V 20 chains to Quarter Post on east side of section (By Barrett) Hit Post, set Posts every 20 chains on this quarter line. Then south from 8th Post at NE corner of Joseph's land 20 chains & set Post. Then west to Post (near House) 20 chains on section line on the west side of section 29. Made 2 Bearings at NE & SE corners of Joseph's land as shown in Plat. Then in the NW corner of said plat, measured out a tract of land and set Posts in each corner as shown in Plat.

M. G. Joseph County Surveyor

M1529150700001

# CERTIFICATE OF SURVEY.

STATE OF WISCONSIN, } ss. M. L. Smith Surveyor, in and for the County and State aforesaid, do hereby certify that I have surveyed and subdivided Section 29 Township 15 North of Range 7 East of 4th Principal Meridian, as represented by the courses and distances on the following plat, and annexed field-notes of survey:  
 Established the center of the section at the point of intersection of straight quarter lines.  
 Established all quarter-quarter corners upon the section boundary at proportional distances between known section and quarter section corners, according to the original field-notes of the Government survey.  
 Established all lost corners at proportionate distances between known corners, according to original field-notes of the Government survey:



Plat of Section 29 Township 15 North, Range 7 East of 4th Principal Meridian. Scale, 80 chains to 6 inches. The figures in red ink are the lengths of the lines as stated in the field-notes of the Government survey.

Declination of the Magnetic Meridian from the True Meridian \_\_\_\_\_ East.

Surveyed and subdivided Aug-17 & 19 A. D. 1909, in accordance with the State Laws and Instructions of the Commissioner of the General Land Office, and recorded on pages \_\_\_\_\_ of Register in the County Surveyor's office.

WITNESS my hand this 18 day of Aug A. D. 1909.  
M. L. Smith Surveyor.

*The above work was done by the request of and for Mr M. L. Joseph.*

Surveyed in Reference to the original survey of sec 22 2-15-27-3

Mis29150700001