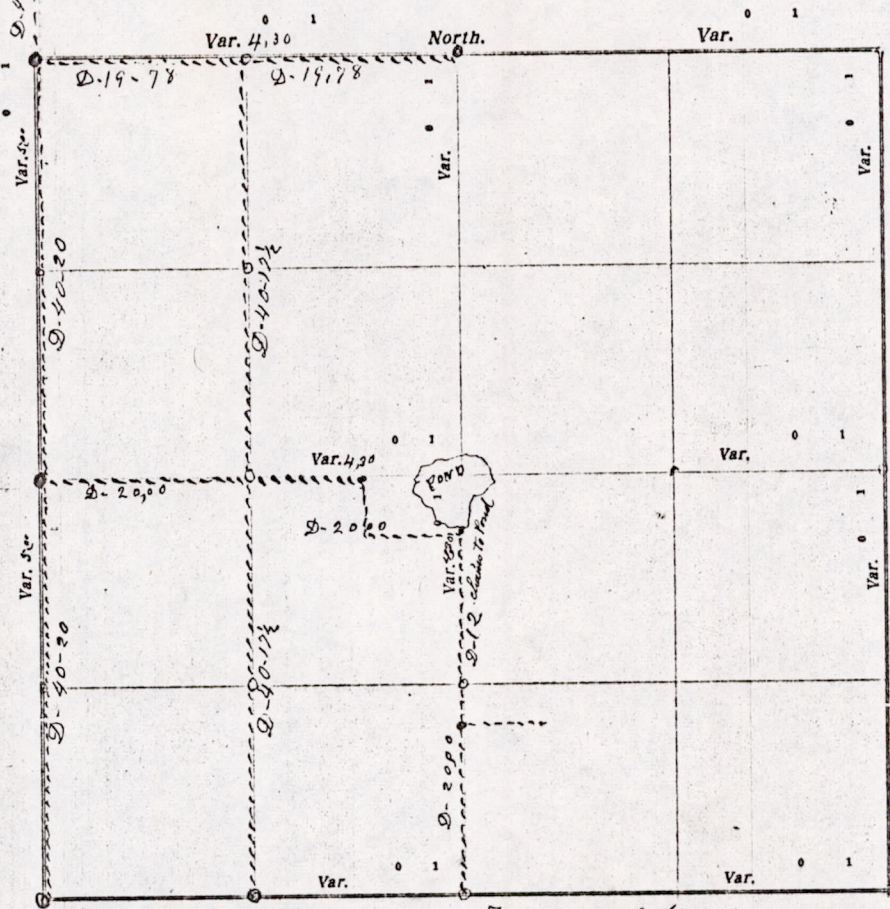


CERTIFICATE OF SURVEY.

STATE OF WISCONSIN, } ss. M. L. Smith Surveyor, in and for the County and State aforesaid, do
ADAMS COUNTY.

hereby certify that I have surveyed and subdivided Section 33 Township 15 North of Range 7 East of 4th Principal Meridian, as represented by the courses and distances on the following plat, and annexed field-notes of survey:

Established the center of the section at the point of intersection of straight quarter lines.
Established all quarter-quarter corners upon the section boundary at proportionate distances between known section and quarter section corners, according to the original field-notes of the Government survey.
Established all lost corners at proportionate distances between known corners, according to original field-notes of the Government survey.



Plat of Section 33, Township 15 North, Range 7 East of 4th Principal Meridian. Scale, 80 chains to 6 inches. The figures in red ink are the lengths of the lines as stated in the field-notes of the Government survey.

Declination of the Magnetic Meridian from the True Meridian _____ East.

Surveyed and subdivided May 5 and 6th A. D. 1915, in accordance with the State Laws and Instructions of the Commissioner of the General Land Office, and recorded on pages _____ of Register in the County Surveyor's office.

WITNESS my hand this 6th day of May A. D. 1915.
M. L. Smith County Surveyor.

The above work was done at the request of E. Frost & W H Helm

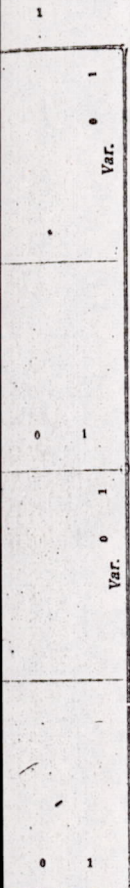
M1533150700001

DESCRIPTION of Section, Quarter Section and Quarter-quarter Section Corners of Section
 Township _____ North, Range _____ East of _____ Principal Meridian.

N. B.—The variation of needle adopted in establishing corners is _____

the County and State aforesaid, do
 survey: East of _____

own section and quarter section
 notes of the Government survey:



No.	Government Corners	Bearing Trees	In. dia.	Courses they bear	Links Distant	Bearing Trees	In. dia.	Courses they bear	Links Distant
1	N. W. Sec. cor. Identified	<i>Burrell</i> <i>new</i>		W 31° E	30	W oak	12	N 55° E	108
2	N. E. Sec. cor. Identified								
3	S. E. Sec. cor. Identified								
4	S. W. Sec. cor. Identified								
5	N. 1/4 Sec. cor. Identified	<i>Burrell</i> <i>new</i>		S 29 1/2° W	65 1/2	Blk oak	6	N 37° E	42
6	E. 1/4 Sec. cor. Identified								
7	S. 1/4 Sec. cor. Identified								
8	W. 1/4 Sec. cor. Identified								
SUBDIVISION CORNERS.									
1	Center 1/4 Sec. cor.								
2	North 1/4-1/4s N. W. qr.								
3	East 1/4-1/4s N. W. qr.								
4	South 1/4-1/4s N. W. qr.								
5	West 1/4-1/4s N. W. qr.								
6	Center 1/4-1/4s N. W. qr.								
7	North 1/4-1/4s N. E. qr.								
8	East 1/4-1/4s N. E. qr.								
9	South 1/4-1/4s N. E. qr.								
10	Center 1/4-1/4s N. E. qr.								
11	East 1/4-1/4s S. E. qr.								
12	South 1/4-1/4s S. E. qr.								
13	West 1/4-1/4s S. E. qr.								
14	Center 1/4-1/4s S. E. qr.								
15	South 1/4-1/4s S. W. qr.								
16	West 1/4-1/4s S. W. qr.								
17	Center 1/4-1/4s S. W. qr.								

NAMES OF SWORN ASSISTANTS.

CHAINMEN	FLAGMEN	AXMEN
<i>E Frost</i> <i>W H Helm</i>		

MINUTES.

commencing at the Identified S. W. corner of section 33 2-15-R-7-E and ran north at S 20° V 80 chains & 40 links to the grove post at the N. W. corner of said section set & established quarter Post at 40-20. Then Ran East from the V. W. corner of said section on the section line 39 chains & 78 links to the former quarter Post (Burrell) on the North side of said section, set post at equal distance between said corners. Then ran south on the 8th line 80 chains & 35 links to the 8th Post on Town on the south side of the section. Then from the established quarter Post on the west side of the section ran East on the quarter line 20 chains and set Post. Then 10 chains & set Post "then offset," then 10 chains to the N. S. quarter line. Then started at the quarter Post on Town line on the south side of the section & Ran North at 43° D-V 20 chains & set Post, then North 12 chains to the south edge of Pond

MIS 33150700001