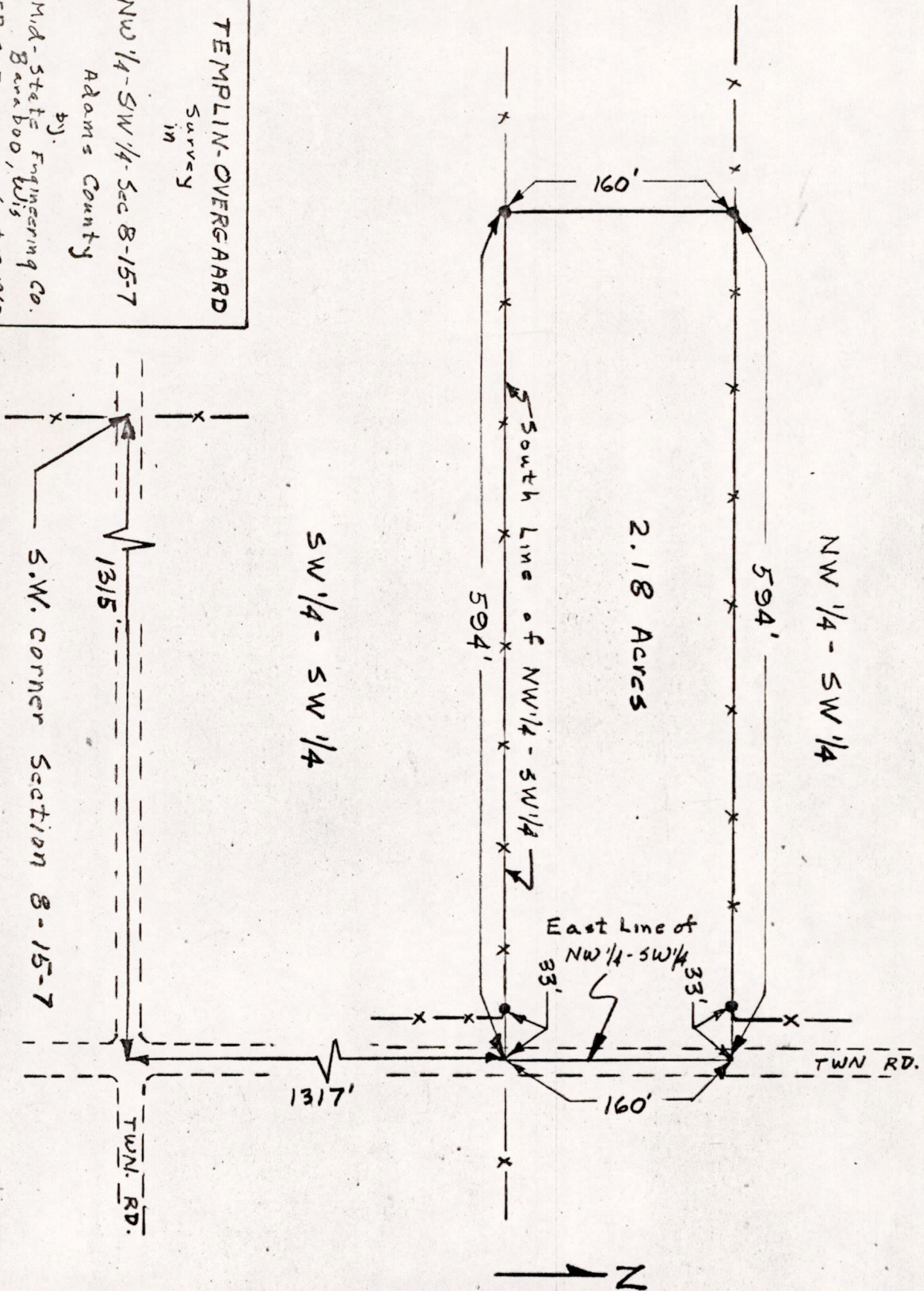


TEMPLIN-OVERGARD
 Survey
 in
 Adams County
 NW 1/4 - SW 1/4 - Sec 8-15-7
 by
 Mid-State Engineering Co.
 Baraboo, Wis
 Sept 12, 1960
 F.B. 307

14-52-83



● Iron Rpe set in Field.

Pos 08150731001