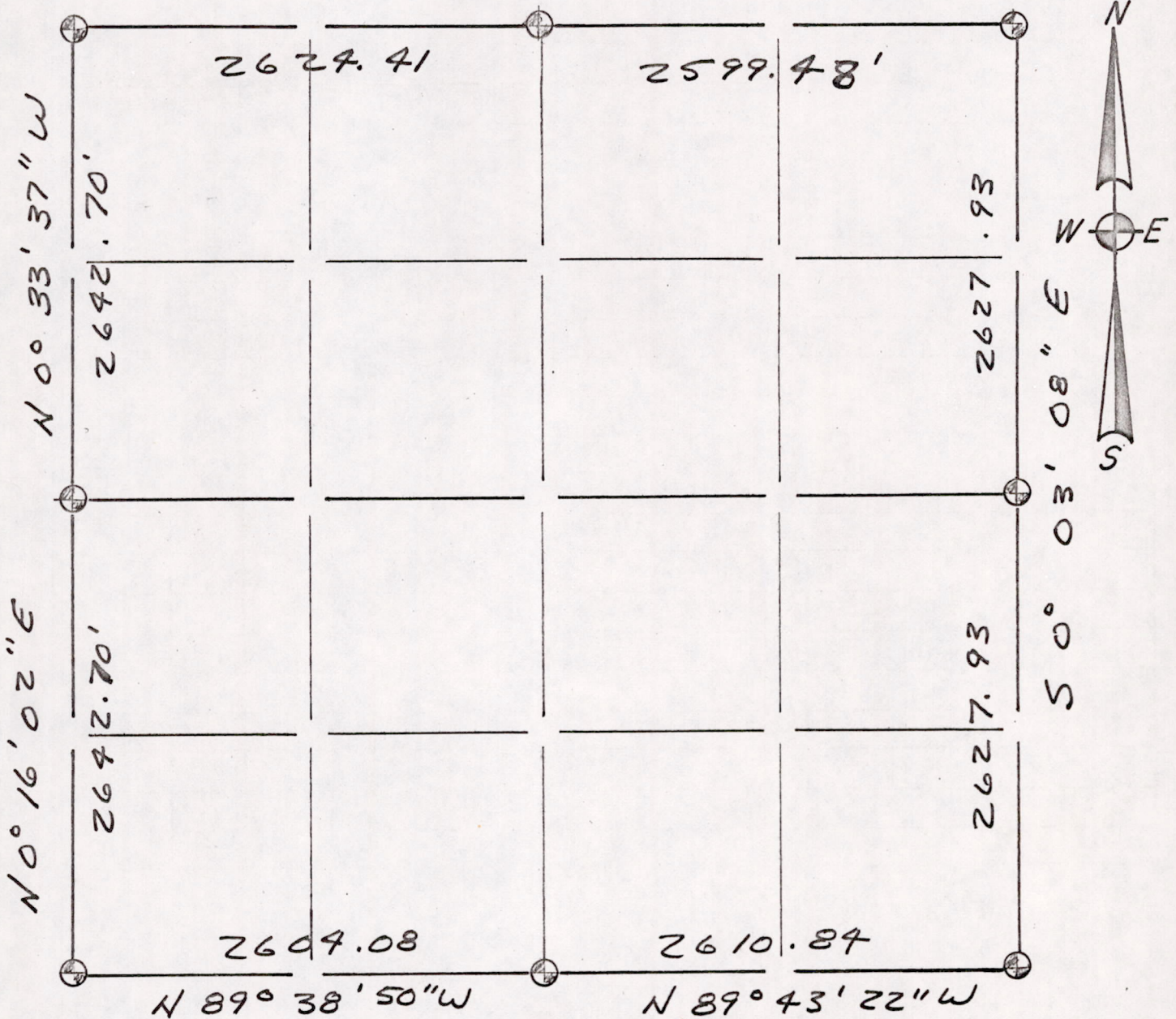


Section Summary and Index

Section 21 - Town 15 - Range 7

S 89° 21' 48" E



LEGEND

- ⊕ - Harrison cast iron monument.
- - Stone or concrete monument.
- - Other \_\_\_\_\_

Kiedrowski Engineering, Inc.  
 4340 80th Street South (Kellner)  
 Wisconsin Rapids, WI 54494

Sec 21150700001

JUNE 19, 1979