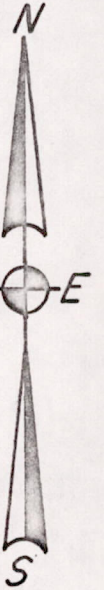
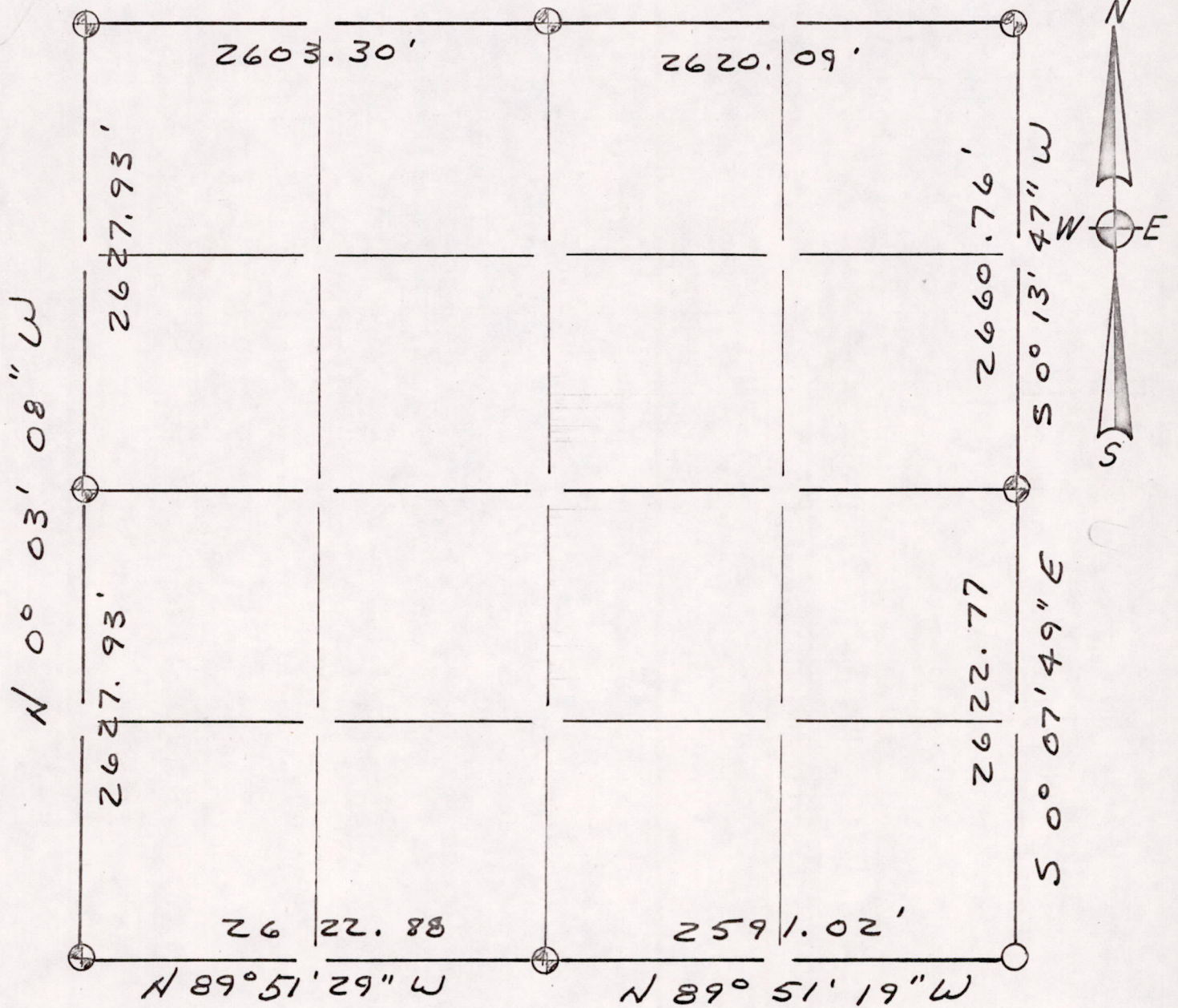


Section Summary and Index

22 - 15 - 7
 Section Town Range

N 89° 50' 23" E



LEGEND

- ⊕ - Harrison cast iron monument.
- - Stone or concrete monument.
- - Other ANGLE IRON

Kiedrowski Engineering, Inc.
 4340 80th Street South (Kellner)
 Wisconsin Rapids, WI 54494

Sec 22150700001

JUNE 19, 1979