

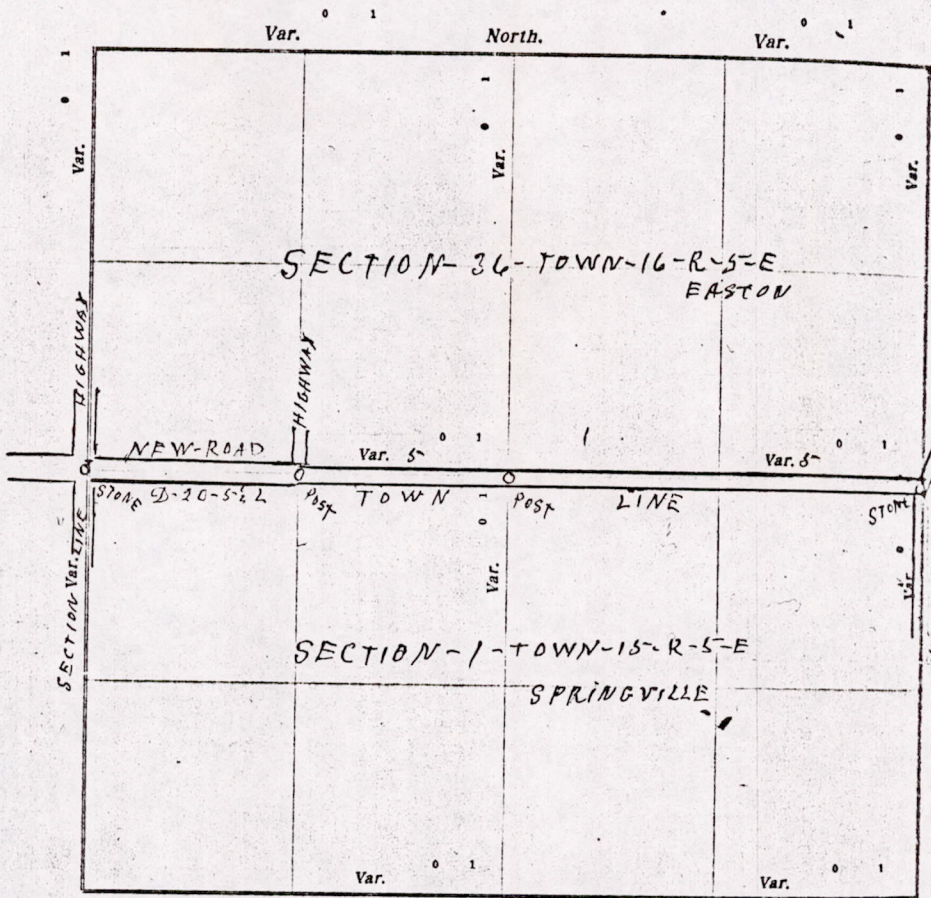
CERTIFICATE OF SURVEY.

STATE OF WISCONSIN, } ss. Adams County.

I, M. G. Smith County Surveyor, in and for the County and State of Wisconsin

hereby certify that I have surveyed and subdivided Section 1-26 between Township 16-5-R-5-E, North of Range _____ East of _____ Principal Meridian, as represented by the courses and distances on the following plat, and annexed field-notes of survey:

- Established the center of the section at the point of intersection of straight quarter lines.
- Established all quarter-quarter corners upon the section boundary at proportional distances between known section and quarter corners, according to the original field-notes of the Government survey.
- Established all lost corners at proportionate distances between known corners, according to original field-notes of the Government survey.



Plat of Section 1-26, Township 16-5-R-5 North, Range _____ East of 4th Principal Meridian. Scale, 1 inch = 40 rods inches. The figures in red ink are the lengths of the lines as stated in the field-notes of the Government survey.

Declination of the Magnetic Meridian from the True Meridian _____ East.

Surveyed and subdivided this 20 day of May A. D. 1924, in accordance with the State Laws and Instructions

the Commissioner of the General Land Office, and recorded on pages _____ of Register in the County Surveyor's office.

WITNESS my hand this 20th day of May A. D. 1924.

M. G. Smith County Surveyor

The above work was done at the request of the town Board of the towns of Easton & Springville

MIS 36160500001

