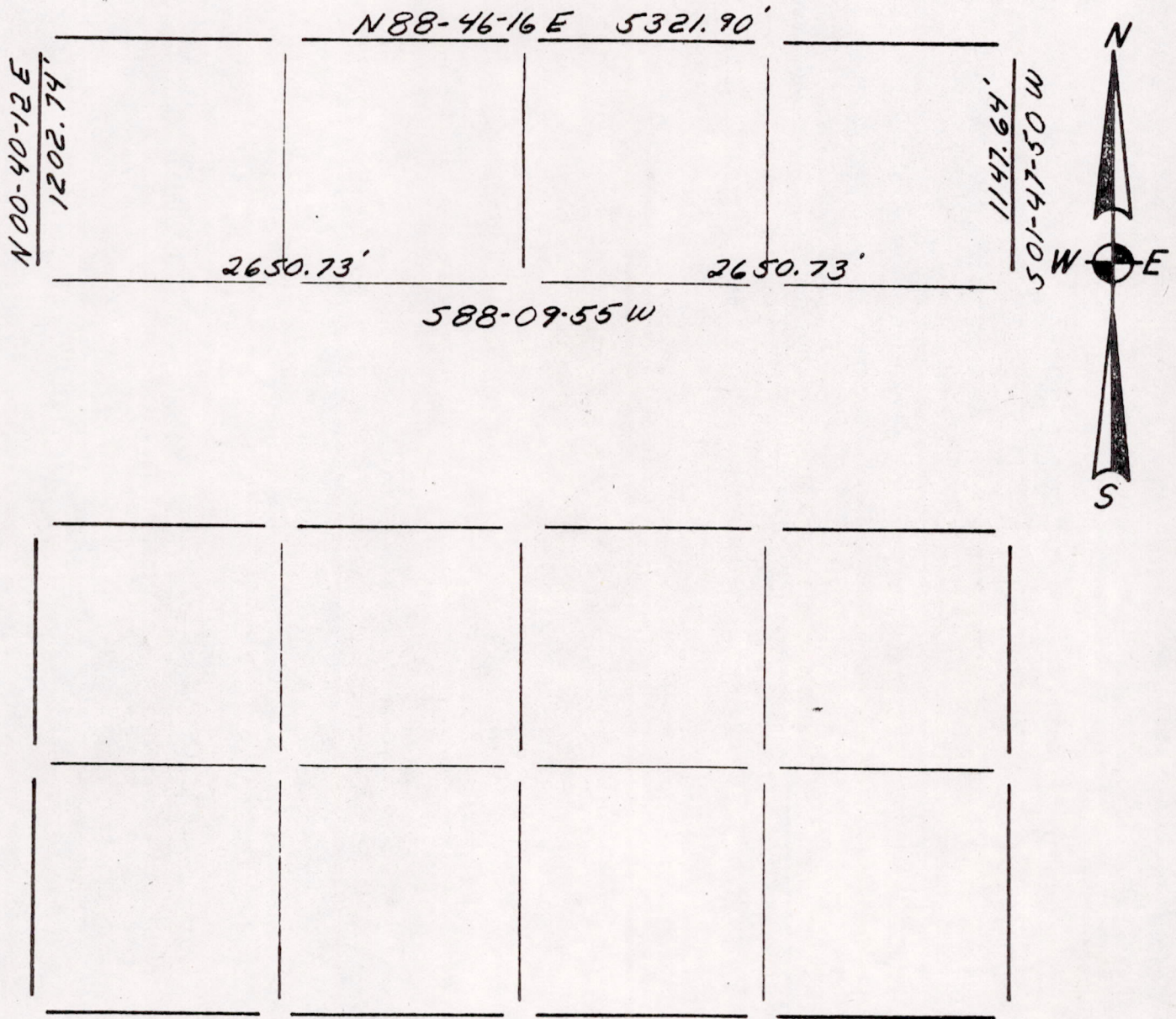


Section Summary and Index

2 - 16 - 5
 Section Town Range



LEGEND

- ⊕ - Harrison cast iron monument.
- - Stone or concrete monument.
- - Other _____

COMPOSITE OF D.C.H. & L.J.H.
 TRAVERSES & COMPS.

2/3/81

Kiedrowski Engineering, Inc.
 4340 80th Street South (Kellner)
 Wisconsin Rapids, WI 54494

CLOSURE: 1 PART IN 790,150.84
 SJH 2/3/81

Sec 2160500001

sent to CH 2/4/81