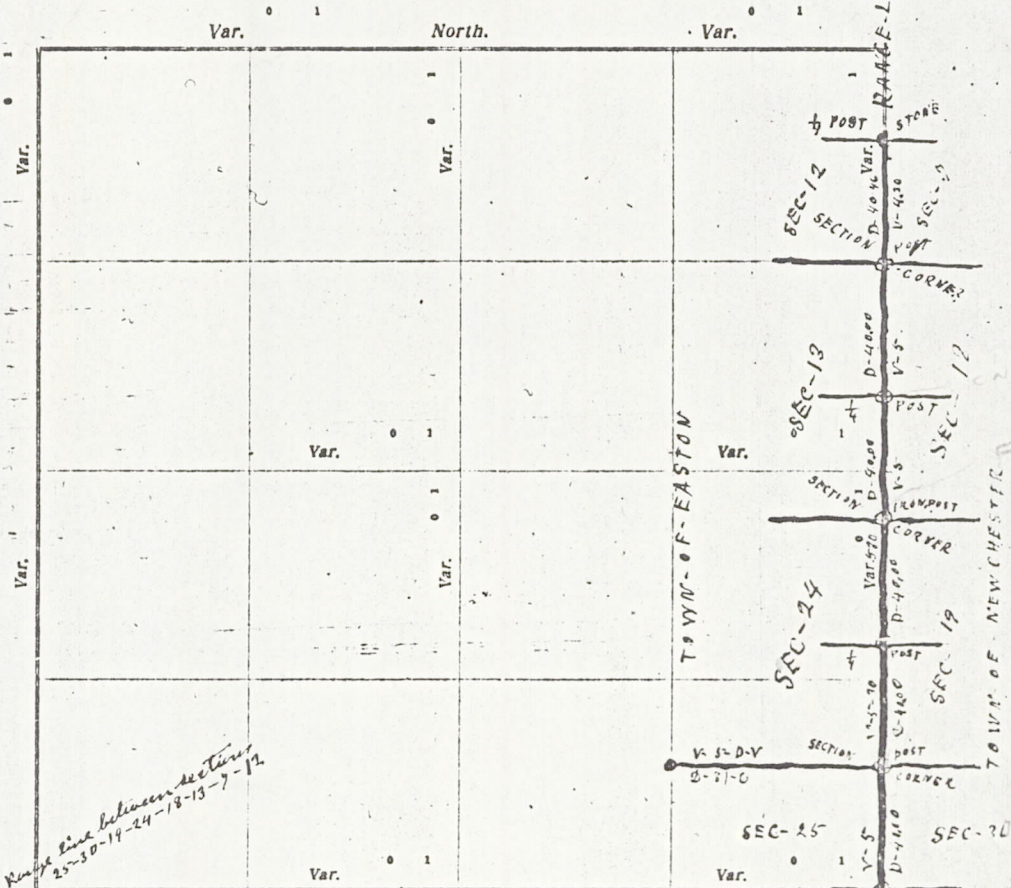


CERTIFICATE OF SURVEY.

STATE OF WISCONSIN,)
ADAMS COUNTY.)

W. C. Smith Surveyor, in and for the County and State aforesaid, do hereby certify that I have surveyed ~~and divided~~ *the Range line between Sections 25-30-19-24-13-7-12* Township *16*, North of Range *6* East of *4th* Principal Meridian, as represented by the courses and distances on the following plat, and annexed field-notes of survey:

Established the center of the section at the point of intersection of *straight* quarter lines.
Established all quarter-quarter corners upon the section boundary at proportional distances between known section and quarter section corners, according to the original field-notes of the Government survey.
Established all lost corners at proportionate distances between known corners, according to original field-notes of the Government survey.



Plat of Section _____, Township *16* North, Range *6* East of *4th* Principal Meridian. Scale, 80 chains to 1 inch. The figures in red ink are the lengths of the lines as stated in the field-notes of the Government survey.

Declination of the Magnetic Meridian from the True Meridian _____ East.

Surveyed and ~~divided~~ *the Range line between* _____ A. D. 19*17*, in accordance with the State Laws and Instructions of the Commissioner of the General Land Office, and recorded on pages _____ of Register in the County Surveyor's office.

WITNESS my hand this *8th* day of *June* A. D. 19*17*.

W. C. Smith County Surveyor.

The above work was done at the request of the Town Board of the Town of Easton

MIS13 160600001

