

ADAMS COUNTY

Survey Monument Record

TYPE OF MONUMENT: PK & RLS 878 DISC IN BIT.

STATE PLANE COORDINATES: N _____
E _____

ELEVATION — M.S.L. DATUM: _____

THETA ANGLE: _____

FIELD BOOK: 38 PAGE 25

CORNER NO. _____

SECTION 17

TOWN 16

RANGE 6E



LOCATION
(Indicated by 'X')

SEAL:

BASIS FOR MONUMENT LOCATION

(Use reverse side if necessary)

Show info such as: History of corner, with reference to Vol. and pg. dates, surveyor; exact description of monument replaced; if location computed, by taped or EDM traverse; landowner remarks, etc.

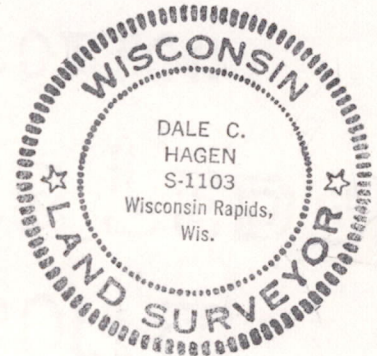
Ran EDM/T2 traverse around Sections 17 and 18 to determine search areas.

Could find no evidence of the original post placed here by M.C. Smith as described on Page 141 of Volume 1 of Adams County Survey Records.

Set corner by doubling over line and distance from South Quarter corner to Forty corner between South Quarter corner and Center.

Falls 7' East of existing fence, but matches record distances quite well.

Monumented 1-3-77.



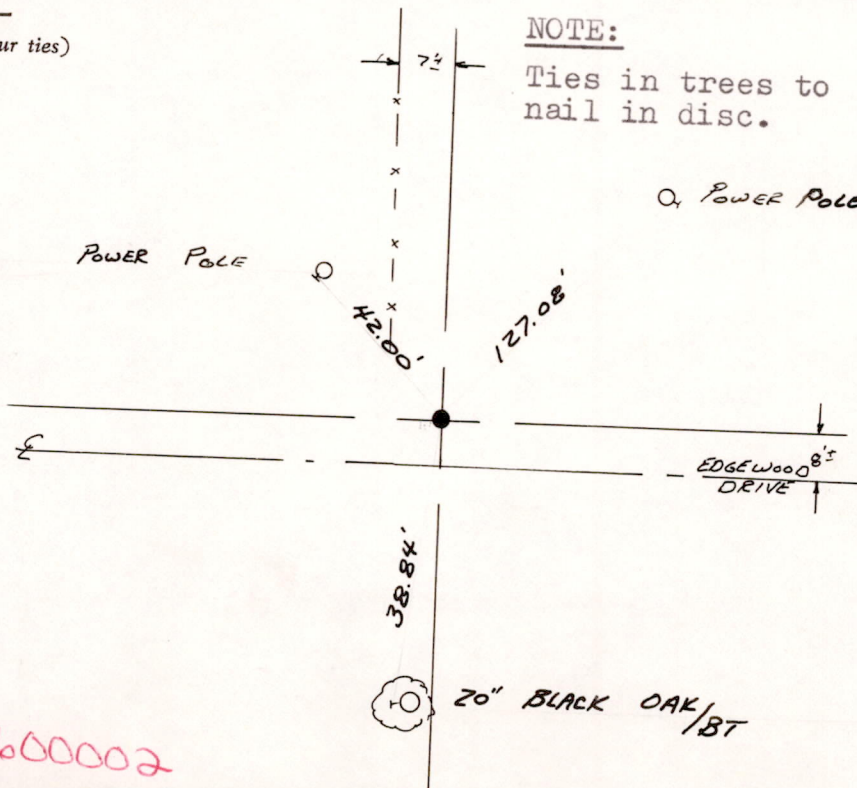
CERTIFIED CORRECT:

Dale C Hagen
Registered Land Surveyor

DATE: Feb. 8, 1977

TIE SKETCH

(Show at least four ties)



NOTE:

Ties in trees to nail in disc.

Q, POWER POLE

