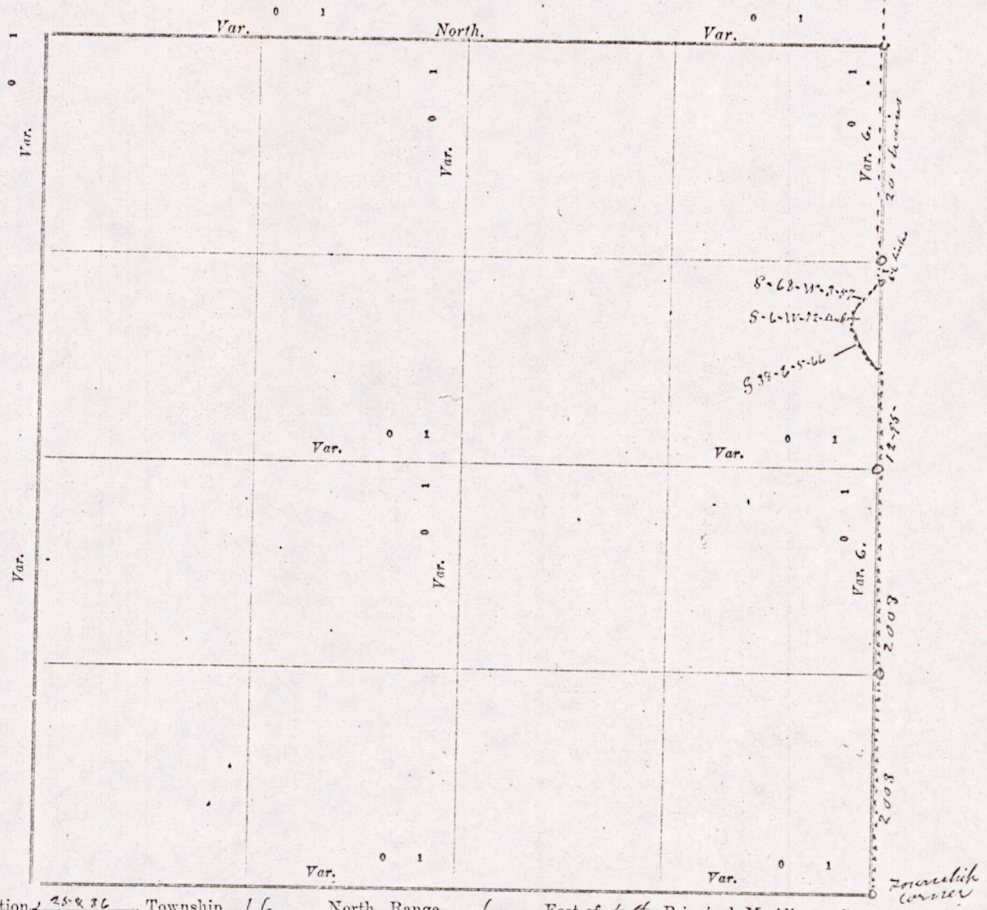


# CERTIFICATE OF SURVEY.

STATE OF WISCONSIN, } ss. M. C. Smith Surveyor, in and for the County and State aforesaid, do  
 ADAMS COUNTY. }  
 hereby certify that I have surveyed and subdivided Section 25 & 26 Township 16 North of Range 6 East of 4th  
 Principal Meridian, as represented by the courses and distances on the following plat, and annexed field-notes of survey:  
 Established the center of the section at the point of intersection of straight quarter lines.  
 Established all quarter-quarter corners upon the section boundary at proportional distances between known section and quarter section  
 corners, according to the original field-notes of the Government survey.  
 Established all lost corners at proportionate distances between known corners, according to original field-notes of the Government survey:



Plat of Section 25 & 26, Township 16 North, Range 6 East of 4th Principal Meridian. Scale, 80 chains to 6 inches. The figures in red ink are the lengths of the lines as stated in the field-notes of the Government survey.

Declination of the Magnetic Meridian from the True Meridian \_\_\_\_\_ East.  
 Surveyed and subdivided 14th day of May A. D. 1911, in accordance with the State Laws and Instructions of the Commissioner of the General Land Office, and recorded on pages \_\_\_\_\_ of Register in the County Surveyor's office.  
 WITNESS my hand this 14th day of May A. D. 1911.

M. C. Smith County Surveyor.

The above work was done at the request of the Town Boards of the Towns of Easton & New Chester.

MIS 25160600002

Start  
at 6  
set  
20 chains  
chains  
Bluff  
South  
Var.  
of an  
of

