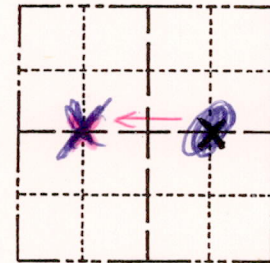


Government Land Corner Certificate

ADAMS County
 TYPE OF MONUMENT: STONE
 STATE PLANE COORDINATES: N _____
 E _____
 ELEVATION — M.S.L. DATUM: _____
 THETA ANGLE: _____
 FIELD BOOK: 71 PAGE 113
 DRAWN BY: R. NUBER

CORNER NO. _____
 SECTION 26
 TOWN 16
 RANGE 6



LOCATION
(Indicated by 'X')

BASIS FOR MONUMENT LOCATION

Show info such as: History of corner, with reference to Vol. and pg., dates, surveyor; exact description of monument replaced; if location computed, by taped or EDM traverse; landowner remarks, etc. (Use reverse side if necessary)

Excavated with backhoe at location shown by Hubert Babcock, who had seen the stone some 40 years previous. Found dug in stone and accepted as corner.

*1/8th Post CALLED AS SET FOR
 BY LATHROP - MC SMITH 1902
 SURVEY FOR ROAD IN EASTON*

SEAL:



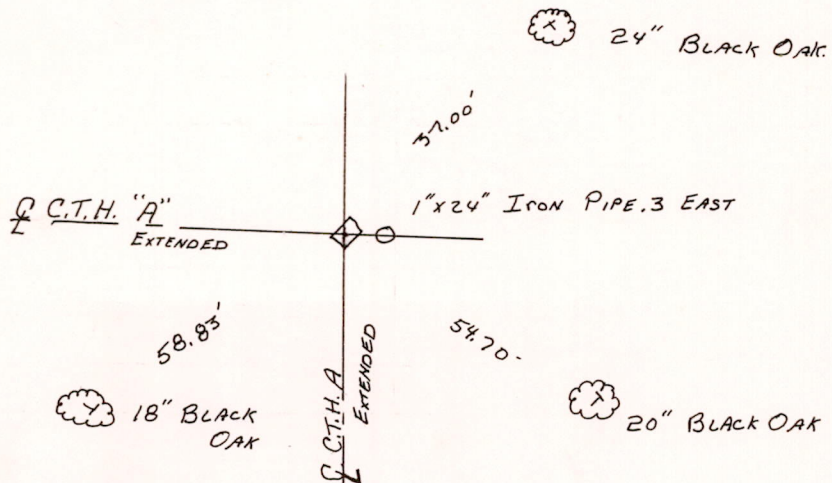
DATA SHOWN HERE ON
 CERTIFIED CORRECT:

Gregory P Rhinehart
 Registered Land Surveyor

DATE: 9/4/79

TIE SKETCH

Show at least four ties, also fence lines, roads, topo, size and type of witness trees and if off road - best way to arrive at corner.



M152616060004