

# CERTIFICATE OF SURVEY.

DESCR

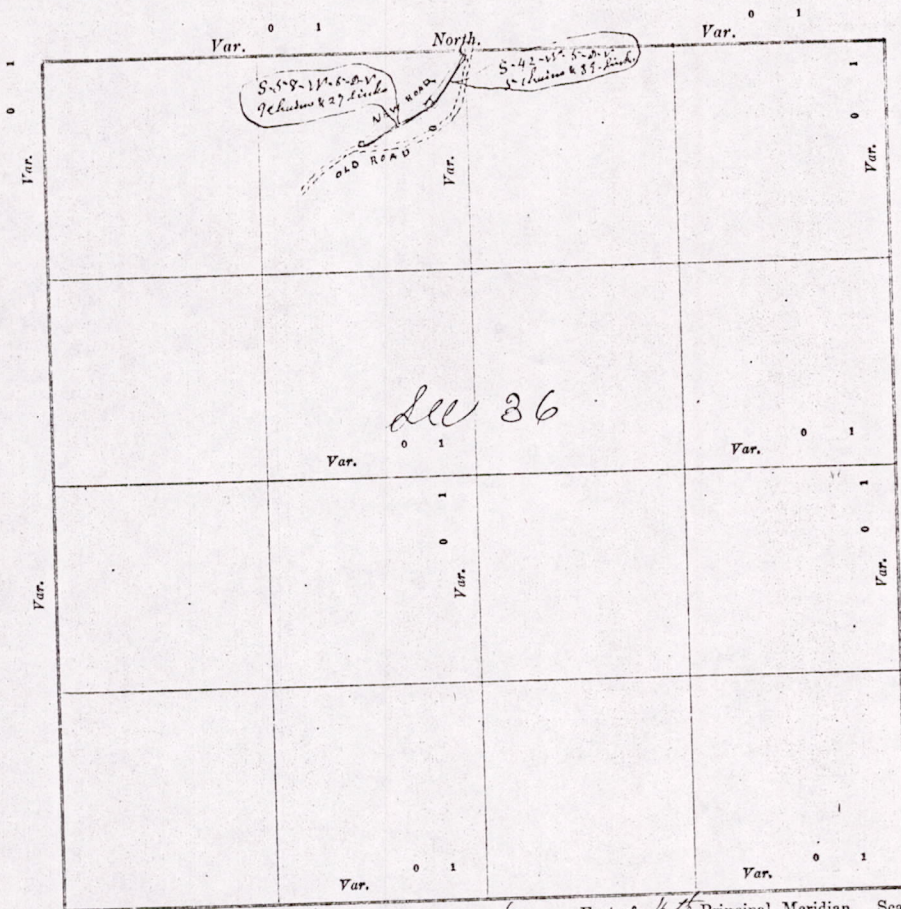
Townsh

N. B. H. 100

STATE OF WISCONSIN, } ss. M. L. Smith Surveyor, in and for the County and State aforesaid, do  
ADAMS COUNTY.

hereby certify that I have surveyed ~~and subdivided~~ Section 36 Township 16 North of Range 6 East of 46  
Principal Meridian, as represented by the courses and distances on the following plat, and annexed field-notes of survey:

- Established the center of the section at the point of intersection of straight quarter lines
- Established all quarter-quarter corners upon the section boundary at proportional distances between known section and quarter section corners, according to the original field-notes of the Government survey.
- Established all lost corners at proportionate distances between known corners, according to original field-notes of the Government survey:



No.	SUBDIV
1	Center
2	North
3	East 1/4
4	South
5	West 1/4
6	Center
7	North
8	East 1/4
9	South
10	Center
11	East 1/4
12	South
13	West 1/4
14	Center
15	South
16	West 1/4
17	Center

*Ed. Brown  
I. L. Stone*

Plat of Section 36, Township 16 North, Range 6 East of 46 Principal Meridian. Scale, 80 chains to 6 inches. The figures in red ink are the lengths of the lines as stated in the field-notes of the Government survey.

Declination of the Magnetic Meridian from the True Meridian \_\_\_\_\_ East.

Surveyed and subdivided May 14 A. D. 1903, in accordance with the State Laws and Instructions of the Commissioner of the General Land Office, and recorded on pages \_\_\_\_\_ of Register in the County Surveyor's office.

WITNESS my hand this 14 day of May A. D. 1903.  
M. L. Smith County Surveyor.

*The above work was done at the request of the town Board of the Town of Easton, Ed Brown chairman.*

*Starting  
side of  
42 degree  
58 degree  
the old  
said, no  
track*

MIS 36160600003

