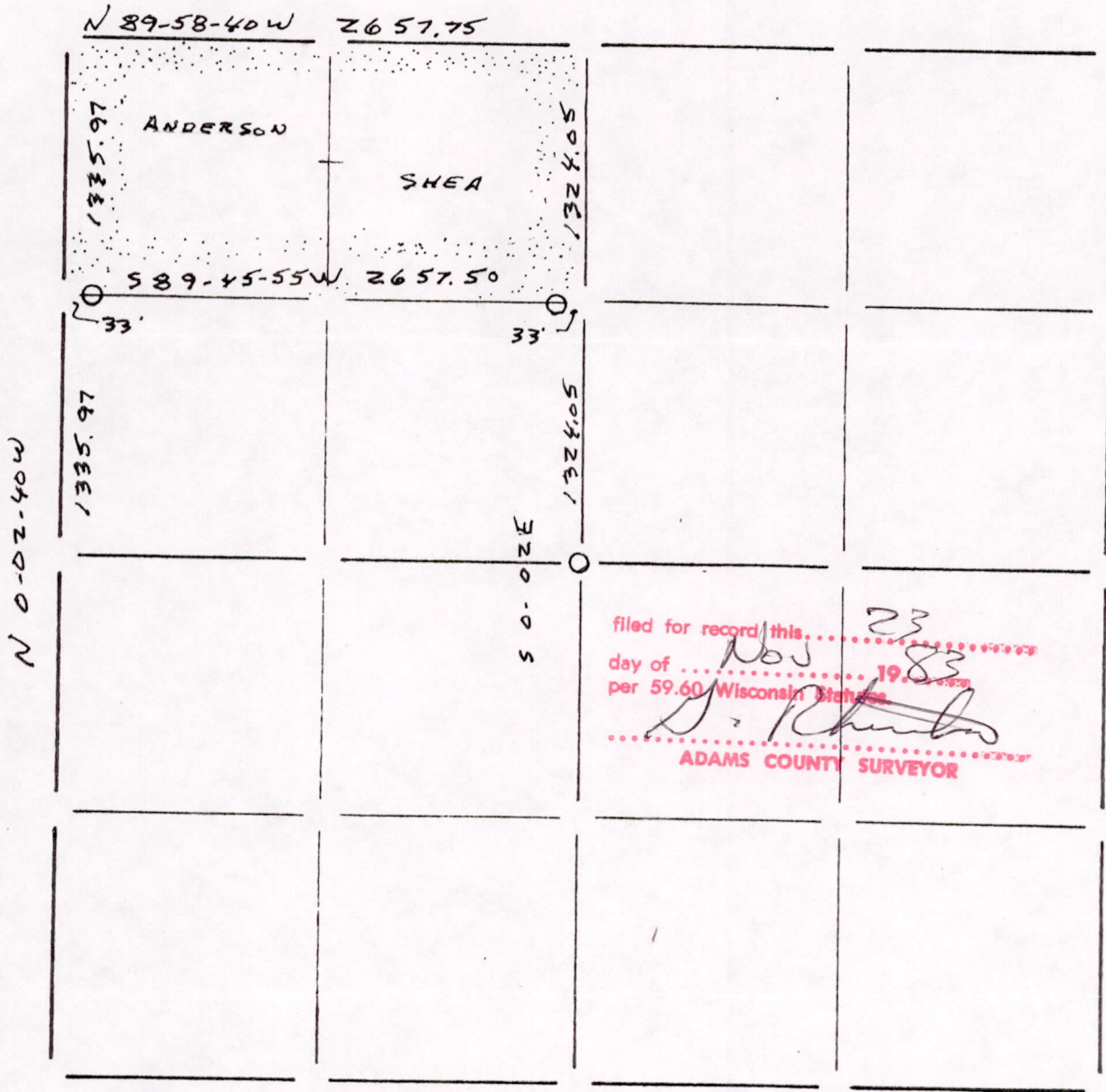


Section Summary and Index

22 - 16 - 6  
 Section      Town      Range



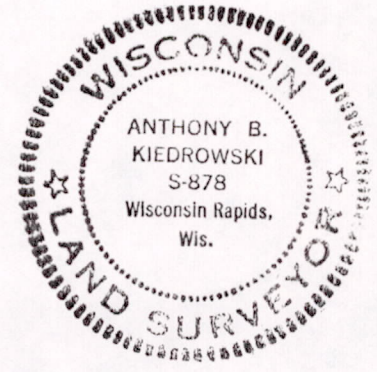
filed for record this 23<sup>rd</sup>  
 day of Nov 1983  
 per 59.60 Wisconsin Statutes  
*[Signature]*  
 ADAMS COUNTY SURVEYOR

LEGEND

- ⊕ - Harrison cast iron monument.
- - Stone or concrete monument.
- - Other 1" Iron Pipe

Copy To Co. Surveyor 11/18/83

Sec 22 16 06 00002



AB Kiedrowski  
 11/18/83