

CERTIFICATE OF SURVEY.

STATE OF WISCONSIN, }
ADAMS COUNTY. }

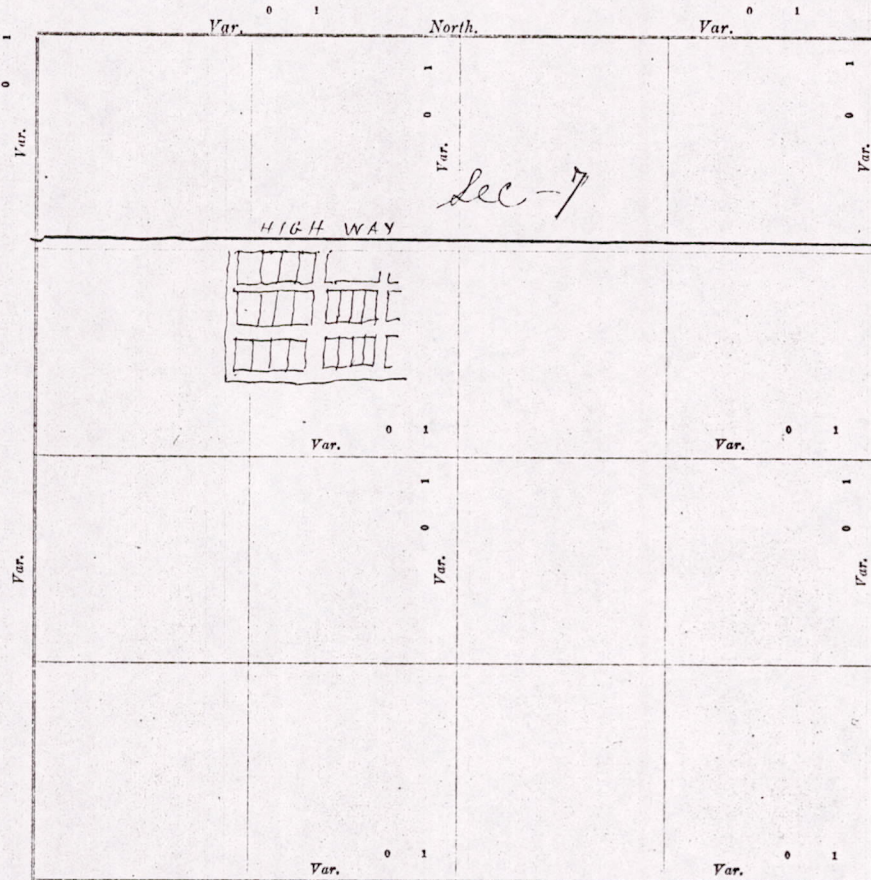
I, _____ Surveyor, in and for the County and State aforesaid, do

hereby certify that I have surveyed and subdivided Section 7 Township 16 North of Range 7 East of 4th Principal Meridian, as represented by the courses and distances on the following plat, and annexed field-notes of survey:

Established the center of the section at the point of intersection of *straight* quarter lines.

Established all quarter-quarter corners upon the section boundary at proportional distances between known section and quarter section corners, according to the original field-notes of the Government survey.

Established all lost corners at proportionate distances between known corners, according to original field-notes of the Government survey:



Plat of Section 7, Township 16 North, Range 7 East of 4th Principal Meridian. Scale, 80 chains to 0 inches. The figures in red ink are the lengths of the lines as stated in the field-notes of the Government survey.

Declination of the Magnetic Meridian from the True Meridian _____ East.

Surveyed and subdivided April 17 A. D. 1913, in accordance with the State Laws and Instructions of

the Commissioner of the General Land Office, and recorded on pages _____ of Register in the County Surveyor's office.

WITNESS my hand this 17 day of April A. D. 1913.

M. L. Smith County Surveyor.

*The above work was done at the request of
A. H. Rook of West Grand Marsh.*

M1507160700003

DEPT. OF THE INTERIOR

UNITED STATES GEOLOGICAL SURVEY

WASHINGTON, D. C.

No.	1	2	3	4	5	6	7	8	9	10	11	12	13	14	15	16	17
Section	1	2	3	4	5	6	7	8	9	10	11	12	13	14	15	16	17

*G. W. ...
H. J. R...*

*The
and
to W
20
in N.
Regis.*

