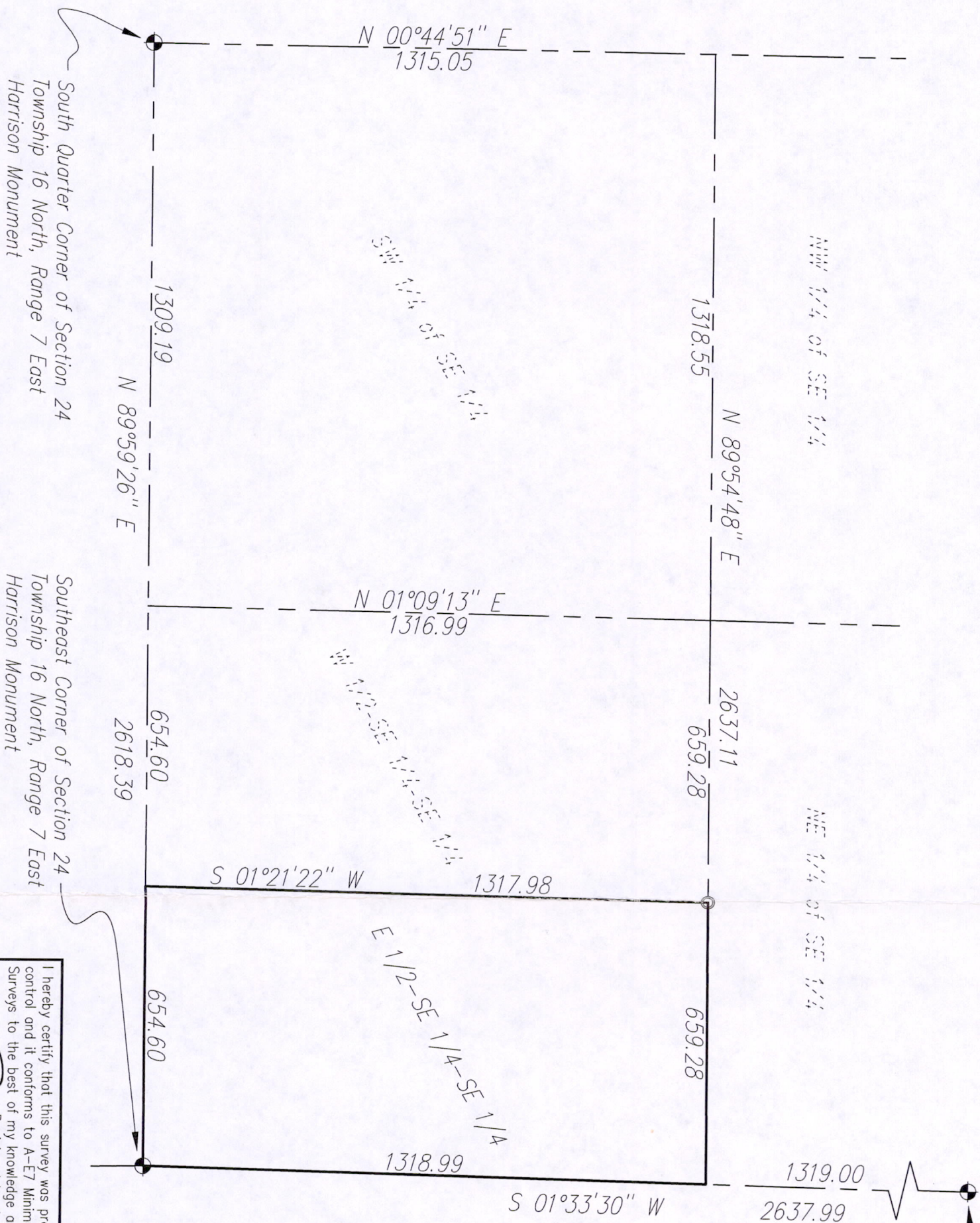


Map of Survey

Common School District
 part of the Southeast 1/4 of the Southeast 1/4
 Section 24, T16N, R7E, 4th P.M.
 Adams County, Wisconsin



South Quarter Corner of Section 24
 Township 16 North, Range 7 East
 Harrison Monument

Southeast Corner of Section 24
 Township 16 North, Range 7 East
 Harrison Monument

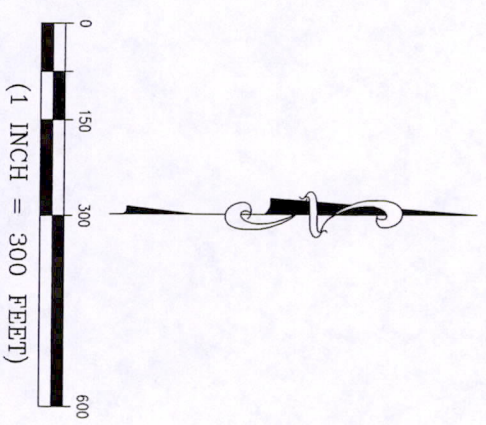
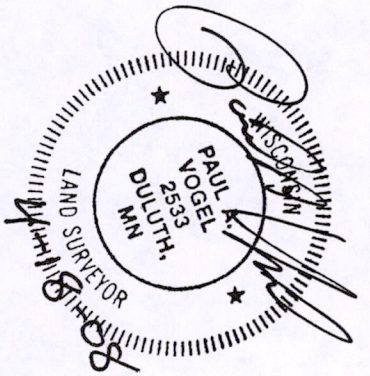
East Quarter Corner of Section 24
 Township 16 North, Range 7 East
 Harrison Monument

SURVEYOR'S NOTES

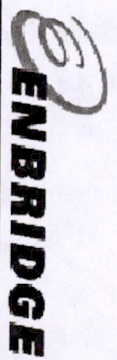
LEGAL DESCRIPTION PER DOCUMENT No. 172445

LEGEND

- = PROPERTY LINE, this survey
- = SET 3/4" x 24" REBAR WEIGHING 1.502 LBS/L.F. W/CAP S-2533



COPYRIGHT 2008 BY LHB, INC. ALL RIGHTS RESERVED.



I hereby certify that this survey was prepared under my direction and control and it conforms to A-E7 Minimum Standards for Property Surveys to the best of my knowledge and belief.
 Registered Land Surveyor S-2533

[Signature]
 Date: 04/18/2008

DATE PREPARED: 4/18/08	DULUTH	MINNEAPOLIS
LHB No.: 080561	21 W. Superior Street Suite 500 Duluth, MN 55802	250 Third Avenue North Suite 450 Minneapolis, MN 55401
FILE: W-333-4.dwg	TEL: 218/727-8446 FAX: 218/727-8456	TEL: 612/338-2029 FAX: 612/338-2088 http://www.LHBcorp.com
SHEET 1 of 1 SHEETS		

P05241160741001