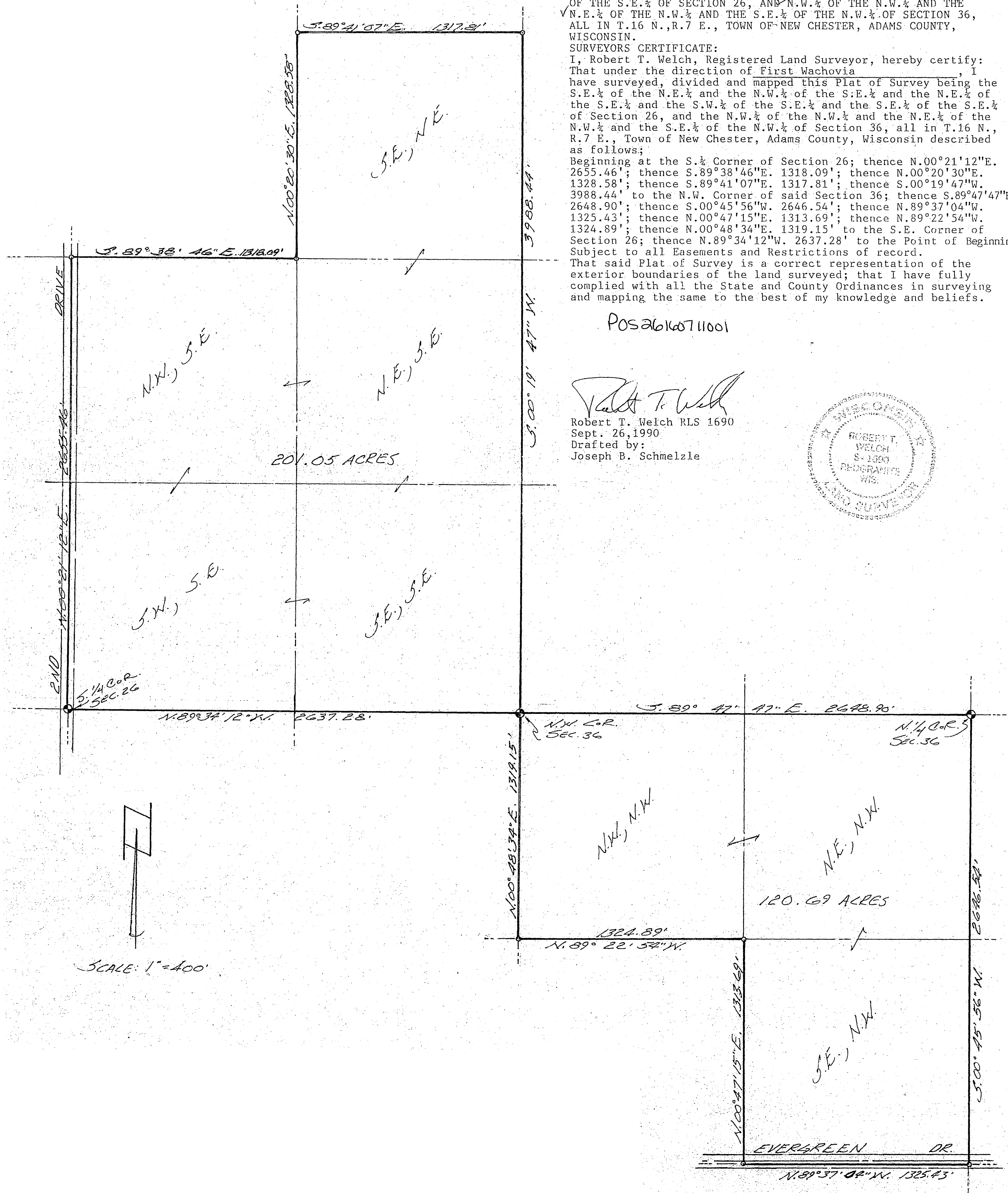


PLAT OF SURVEY



THE S.E. 1/4 OF THE N.E. 1/4 AND THE N.W. 1/4 OF THE S.E. 1/4 AND THE N.E. 1/4 OF THE S.E. 1/4 AND THE S.W. 1/4 OF THE S.E. 1/4 AND THE S.E. 1/4 OF THE S.E. 1/4 OF SECTION 26, AND N.W. 1/4 OF THE N.W. 1/4 AND THE N.E. 1/4 OF THE N.W. 1/4 AND THE S.E. 1/4 OF THE N.W. 1/4 OF SECTION 36, ALL IN T.16 N., R.7 E., TOWN OF NEW CHESTER, ADAMS COUNTY, WISCONSIN.

**SURVEYORS CERTIFICATE:**  
 I, Robert T. Welch, Registered Land Surveyor, hereby certify: That under the direction of First Wachovia, I have surveyed, divided and mapped this Plat of Survey being the S.E. 1/4 of the N.E. 1/4 and the N.W. 1/4 of the S.E. 1/4 and the N.E. 1/4 of the S.E. 1/4 and the S.W. 1/4 of the S.E. 1/4 and the S.E. 1/4 of the S.E. 1/4 of Section 26, and the N.W. 1/4 of the N.W. 1/4 and the N.E. 1/4 of the N.W. 1/4 and the S.E. 1/4 of the N.W. 1/4 of Section 36, all in T.16 N., R.7 E., Town of New Chester, Adams County, Wisconsin described as follows;  
 Beginning at the S. 1/4 Corner of Section 26; thence N.00°21'12"E. 2655.46'; thence S.89°38'46"E. 1318.09'; thence N.00°20'30"E. 1328.58'; thence S.89°41'07"E. 1317.81'; thence S.00°19'47"W. 3988.44' to the N.W. Corner of said Section 36; thence S.89°47'47"E. 2648.90'; thence S.00°45'56"W. 2646.54'; thence N.89°37'04"W. 1325.43'; thence N.00°47'15"E. 1313.69'; thence N.89°22'54"W. 1324.89'; thence N.00°48'34"E. 1319.15' to the S.E. Corner of Section 26; thence N.89°34'12"W. 2637.28' to the Point of Beginning.  
 Subject to all Easements and Restrictions of record.  
 That said Plat of Survey is a correct representation of the exterior boundaries of the land surveyed; that I have fully complied with all the State and County Ordinances in surveying and mapping the same to the best of my knowledge and beliefs.

POS26160711001

*Robert T. Welch*  
 Robert T. Welch RLS 1690  
 Sept. 26, 1990  
 Drafted by:  
 Joseph B. Schmelzle

