

# CERTIFICATE OF SURVEY.

STATE OF WISCONSIN, }  
ADAMS COUNTY. }

ss. M. Lee Smith

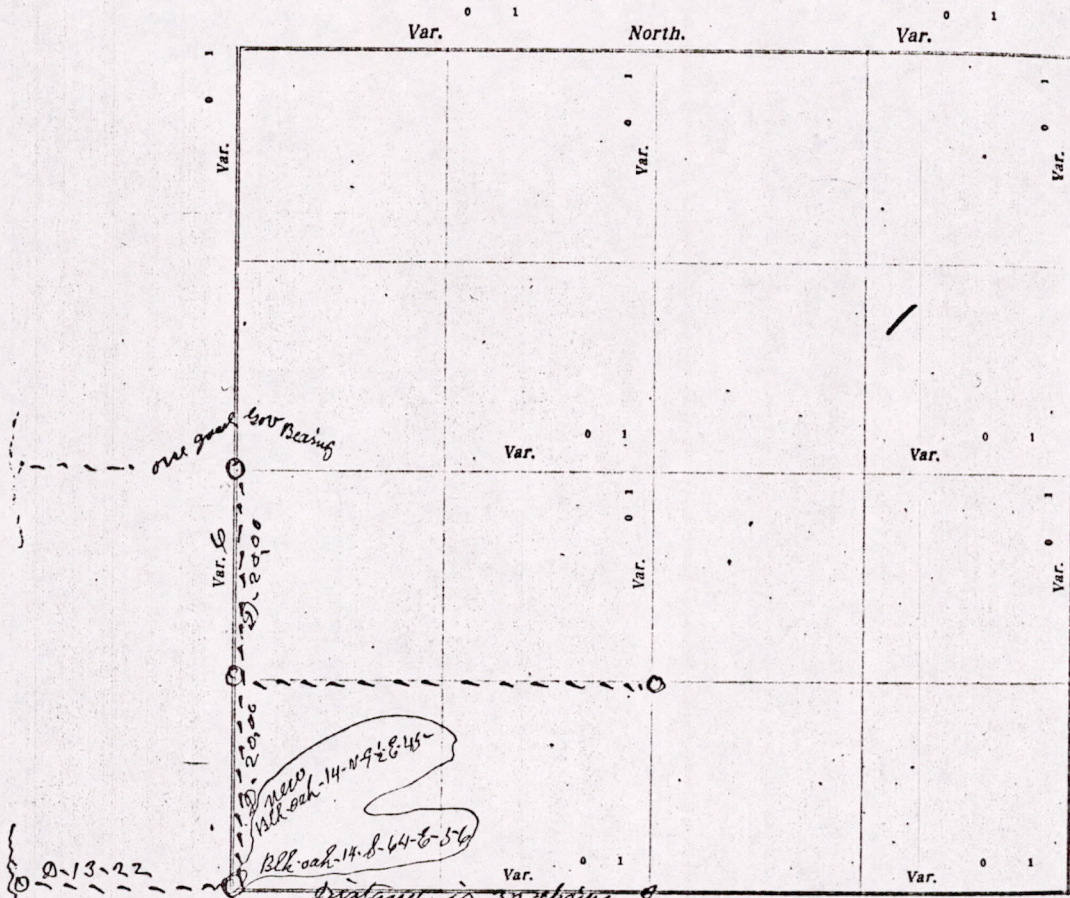
Surveyor, in and for the County and State of Wisconsin

hereby certify that I have surveyed and subdivided Section 6 Township 17 North of Range 8 East of 4th Principal Meridian, as represented by the courses and distances on the following plat, and annexed field-notes of survey.

Established the center of the section at the point of intersection of straight quarter lines.

Established all quarter-quarter corners upon the section boundary at proportional distances between known section and quarter corners, according to the original field-notes of the Government survey.

Established all lost corners at proportionate distances between known corners, according to original field-notes of the Government survey.



Plat of Section 6 Township 17 North, Range 8 East of 4th Principal Meridian. Scale, 80 chains to 1 inch. The figures in red ink are the lengths of the lines as stated in the field-notes of the Government survey.

Declination of the Magnetic Meridian from the True Meridian \_\_\_\_\_ East.

Surveyed and subdivided this 24 day of September A. D. 1921, in accordance with the State Laws and Instructions

of the Commissioner of the General Land Office, and recorded on pages \_\_\_\_\_ of Register in the County Surveyor's office.

WITNESS my hand this 24 day day of September A. D. 1921.

M. Lee Smith County Surveyor

The above work was done at the request of E. Foley and others

M1506170500004

DESCRIPTION of Section, Quarter Section and Quarter-quarter Section Corners of Section

Township \_\_\_\_\_ North, Range \_\_\_\_\_ East of \_\_\_\_\_ Principal Meridian.

98

N. R. - The variation of needle adopted in establishing corners is \_\_\_\_\_

No.	Government Corners	Bearing Trees	In. dia.	Courses they bear	Links Distant	Bearing Trees	In. dia.	Courses they bear	Links Distant
1	N. W. Sec. cor. Identified								
2	N. E. Sec. cor. Identified								
3	S. E. Sec. cor. Identified								
4	S. W. Sec. cor. Identified	<i>New</i>							
5	N. 1/4 Sec. cor. Identified	<i>Red oak</i>	14	92-E	45	<i>Red oak</i>	14	86-E	56
6	E. 1/4 Sec. cor. Identified								
7	S. 1/4 Sec. cor. Identified								
8	W. 1/4 Sec. cor. Identified								
<b>SUBDIVISION CORNERS.</b>									
1	Center 1/4 Sec. cor.								
2	North 1/4-1/4s N. W. qr.								
3	East 1/4-1/4s N. W. qr.								
4	South 1/4-1/4s N. W. qr.								
5	West 1/4-1/4s N. W. qr.								
6	Center 1/4-1/4s N. W. qr.								
7	North 1/4-1/4s N. E. qr.								
8	East 1/4-1/4s N. E. qr.								
9	South 1/4-1/4s N. E. qr.								
10	Center 1/4-1/4s N. E. qr.								
11	East 1/4-1/4s S. E. qr.								
12	South 1/4-1/4s S. E. qr.								
13	West 1/4-1/4s S. E. qr.								
14	Center 1/4-1/4s S. E. qr.								
15	South 1/4-1/4s S. W. qr.								
16	West 1/4-1/4s S. W. qr.								
17	Center 1/4-1/4s S. W. qr.								

NAMES OF SWORN ASSISTANTS.

CHAINMEN	FLAGMEN	AXMEN
<i>Edman Holm</i>		
<i>Arthur Wallace</i>		

MINUTES.

Commencing at the Identified southwest corner of section 6, 2-17-R-5-E and ran west at 7-D-V 13 chains & 22 links to the river bank could find no meander Post or Bearing but set Post then again from said SW corner of said section ran north on the Range line at 5-30 D-V. 40 chains to the Identified quarter Post on the west side of said section. Then started at the 8th Post and ran East on the 8th line at 5-30 D-V. to the N & Quarter line. There was a very heavy thunder storm came up which lasted till night and we were unable to correct up on this line

*M L Smith County Surveyor*

MIS06170500004