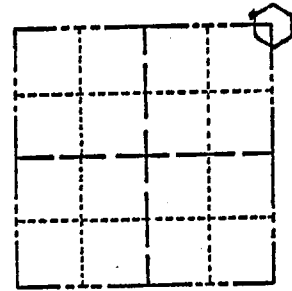


**ADAMS COUNTY**  
**Survey Monument Record**

CORNER NO. 24  
 SECTION 6  
 TOWN 17  
 RANGE 5

TYPE OF MONUMENT: 30" HARRISON  
 STATE PLANE COORDINATES: N \_\_\_\_\_  
 E \_\_\_\_\_  
 ELEVATION — M.S.L. DATUM: \_\_\_\_\_  
 THETA ANGLE: \_\_\_\_\_  
 FIELD BOOK: 104 PAGE 56



LOCATION  
 (Indicated by 'X')

SEAL:

**BASIS FOR MONUMENT LOCATION**

(Use reverse side if necessary)

Show info such as: History of corner, with reference to Vol. and pg, dates, surveyor; exact description of monument replaced; if location computed, by taped or EDM traverse; landowner remarks, etc.

Found iron pipe and set monument

July 21, 1971

Sam T. Millen R.L.S. S-981

*NOTE: Conflicting Data on this T-MCS  
 plat of Idxmsville indicates stone at E-E  
 Excavated/BKIF nothing - MCS addition  
 to Idxmsville plat X at this location - approx  
 24' N of E-E - Trav of sec 5 32 indicates T to  
 be near E-E - Also RR map plat T at E-E*

CERTIFIED CORRECT:

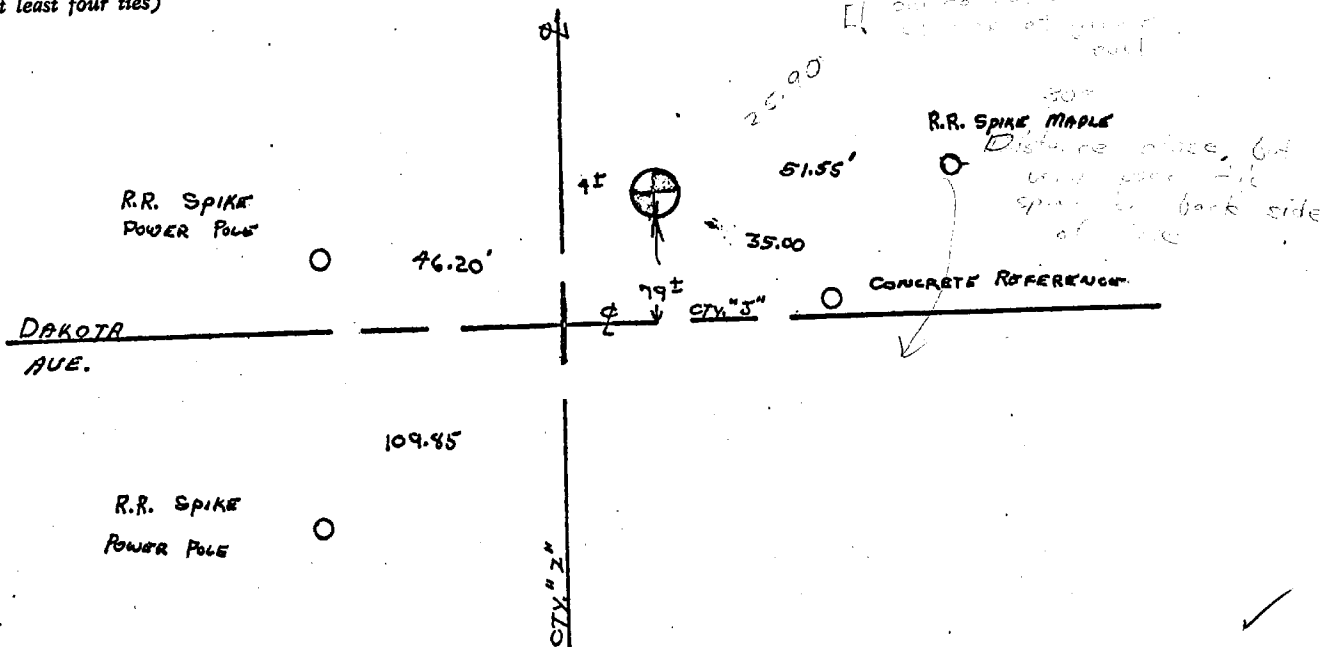
Registered Land Surveyor

DATE: \_\_\_\_\_

*Everything o.k. 11/6/75 DM-SS*

**TIE SKETCH**

(Show at least four ties)



MIS06170500005