

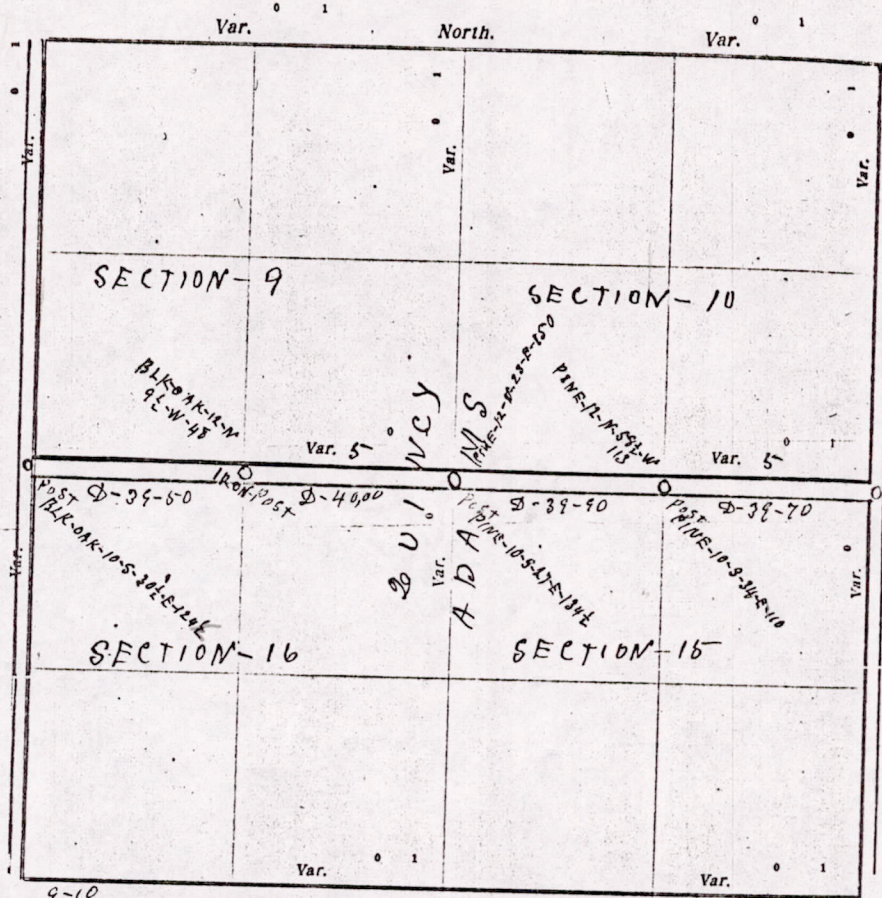
# CERTIFICATE OF SURVEY.

STATE OF WISCONSIN, }  
ADAMS COUNTY. }

*M. L. Smith* Surveyor, in and for the County and State of Wisconsin

hereby certify that I have surveyed and subdivided Sections <sup>9-10</sup> 9-10 Township 17 North of Range 5 East of 4th Principal Meridian, as represented by the courses and distances on the following plat, and annexed field-notes of survey:

Established the center of the section at the point of intersection of straight quarter lines.  
Established all quarter-quarter corners upon the section boundary at proportional distances between known section and quarter corners, according to the original field-notes of the Government survey.  
Established all lost corners at proportionate distances between known corners, according to original field-notes of the Government survey.



Plat of Sections <sup>9-10</sup> 9-10 Township 17 North, Range 5 East of 4th Principal Meridian. Scale, 80 chains to 1 inch. The figures in red ink are the lengths of the lines as stated in the field-notes of the Government survey.

Declination of the Magnetic Meridian from the True Meridian \_\_\_\_\_ East.

Surveyed and subdivided this 28<sup>th</sup> day of September A. D. 1920, in accordance with the State Laws and Instructions of the Commissioner of the General Land Office, and recorded on pages \_\_\_\_\_ of Register in the County Surveyor's office.

WITNESS my hand this 28 day of September A. D. 1920.

*M. L. Smith* County Surveyor

The above work was done at the request of the Town Boards of the Town of Adams & Dairney, W. G. Brunell Clerk Town of Adams and John Fritz Clerk Town of Dairney

MIS 10170500002

