

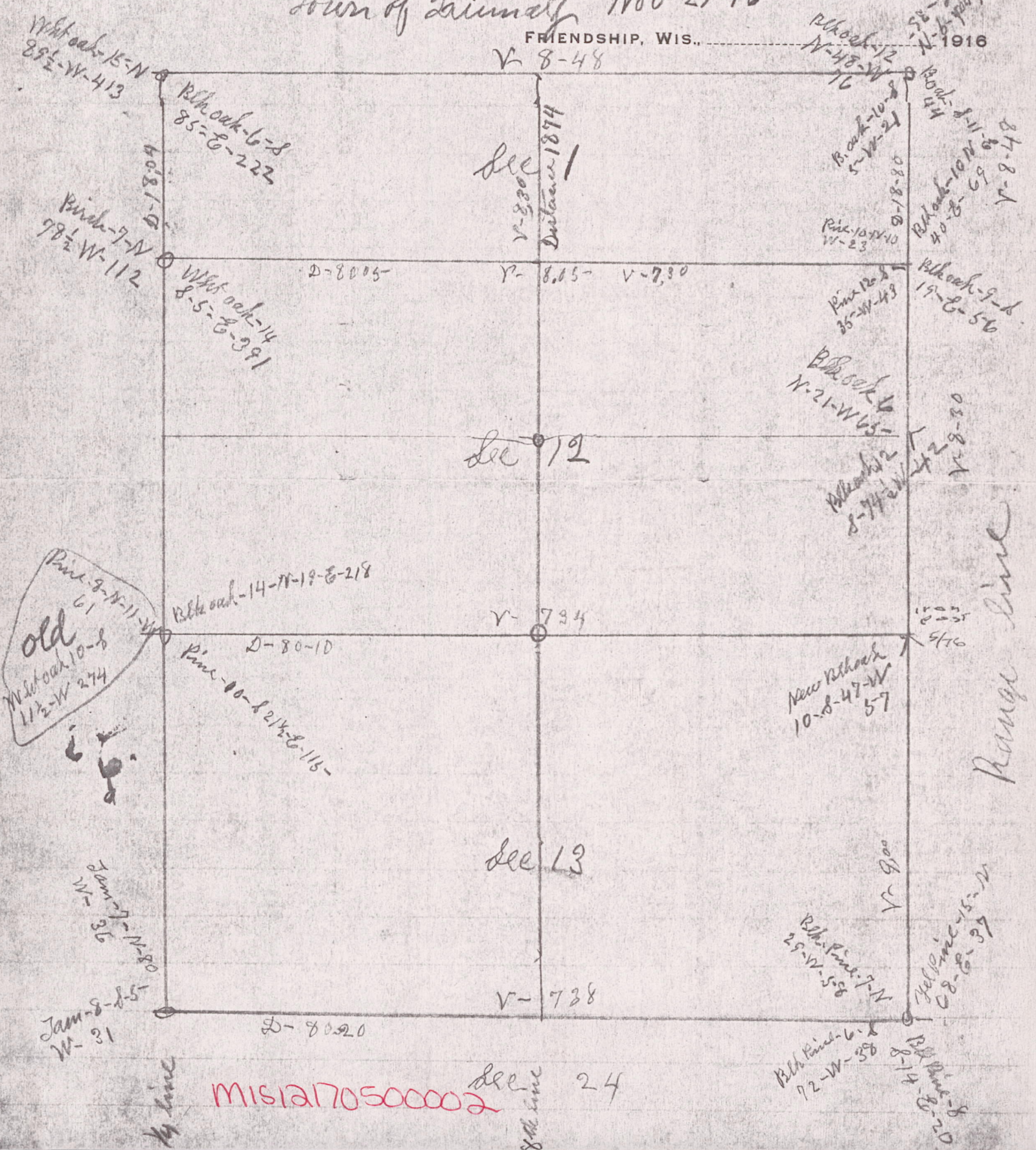
M. C. SMITH
COUNTY SURVEYOR OF ADAMS COUNTY

North Highway-Gas Spence chn
Town of Linn
Nov 29-16

FRIENDSHIP, WIS.

V-8-48

1916



see
V-830
Ditch 1874

see 12

V-734

see 13

V-738

see 24

MISIA 17050000

Range line

M line

old line

old
Rkt oak 10-S
1 1/2-W 274

Jan 7-14-80
W-36

Jan 8-85
W-31

Rkt Pine 7-N
29-W-58

Rkt Pine 6-S
72-W-38

Yellow Pine 15-S
88-E-39

Rkt Pine 8-S
20-E-39

New Rkt oak
10-S-47-W
57

Rkt oak
N-21-W-65

Pine 12-S
35-W-48

Pine 10-N
11-23

Rkt oak-9-S
19-E-56

Rkt oak-10-N
40-E-69

Rkt oak-11-N
80-E-81

Rkt oak-12-N
48-W-76

Rkt oak-6-S
85-E-222

Pine 7-N
98 1/2-W-112

Wkt oak-14
8-S-391

Rkt oak-14-N-19-E-218

Pine-10-S-2 1/4-E-115

iron
2005
576

V-830
V-830

1916