

COUNTY SURVEYOR

In and For

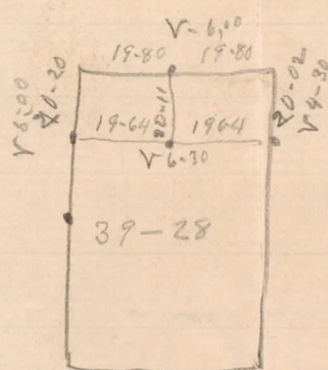
ADAMS COUNTY.

A. J. BARRETT, County Surveyor,
Plainville, Wis.

M. C. SMITH, Deputy,
Friendship, Wis.

Plainville, Wis. 190.....

Aug 10 - 1901. For J.W. Board (Object, South
 Half of N.W. 1/4 of Sec 12, Town, 17, R, S. E., started at 1/4 Post
 on north side of 12, & Ran south at a V of 5 degrees
 to 1/4 Post on South side of section Distance 80 chains
 and 80 links. Missed 1/4 Post 6 links to the west
 must move center Post 3 links East & 40 links south, first Post
 from north 1 1/2 links east & 20 links south, first Post from south
 60 links south & 4 1/2 east. made corrections,
 Started at NW corner of 12 Ran south at 4 1/2 degree V
 Distance 40 chains to 1/4 Post on west side of 12 Missed Post
 24 links to the west. must move 80 Rod Post 12 links east
 Established 1/4 Post made one new Bearing
 Blk Oak 14 - N - 33 - East 820 links, then Ran east
 at a V of 5 degrees, Missed Post at center of section 67 links
 to the south Distance 40 chains & 9 1/2 links must move 80 Rod
 Post 4 3/4 links East and 33 1/2 links north,



2) 3928 (1964)
 3928

MIS12170500003