

ADAMS COUNTY

Survey Monument Record

TYPE OF MONUMENT: 2" x 30" PIPE

STATE PLANE COORDINATES: N _____

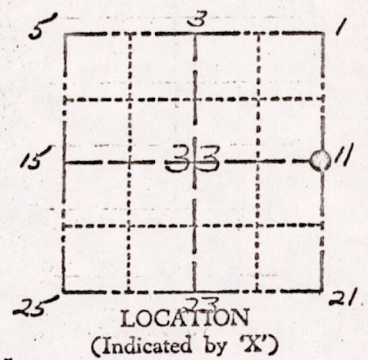
E _____

ELEVATION - M.S.L. DATUM: _____

THETA ANGLE: _____

FIELD BOOK: 454 PAGE 71

CORNER 606
SECTION 33
TOWN 17 N
RANGE 5 E



BASIS FOR MONUMENT LOCATION

(Use reverse side if necessary)

Show info such as: History of corner, with reference to Vol. and pg. dates, surveyor; exact description of monument replaced; if location computed, by taped or EDM traverse; landowner remarks, etc.

*Corner Established with distances & Br's from the Plat of PINECRAMA
Corner Not Monumented
Boundary Surveyed by Robert Klein
Lots Surveyed by Firm. PERRY & CARRINGTON
All distances Taped & Verified*

SEAL:



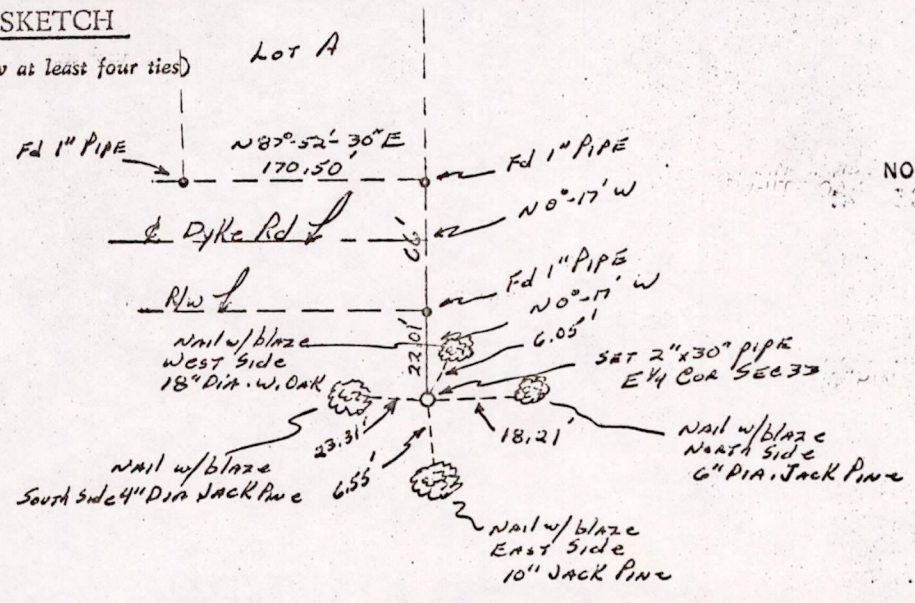
CERTIFIED CORRECT:

Allen Rohde
Registered Land Surveyor
DATE: 1-6-75

Harrison in - Everything O.K. 10/30/75 DM-SS

TIE SKETCH

(Show at least four ties)



NO SCALE

SURVEYOR'S NOTE: This corner will be monumented with a Harrison Marker in the Spring of 1975.

MIS 33170500002