

ADAMS COUNTY

Survey Monument Record

TYPE OF MONUMENT: 2" x 30" PIPE

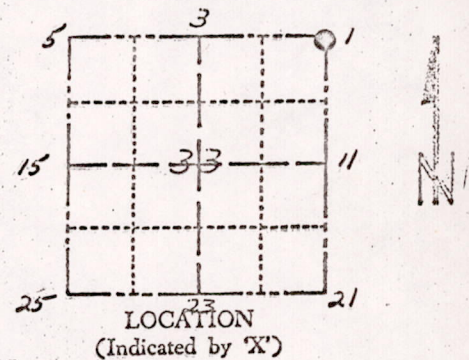
STATE PLANE COORDINATES: N _____
E _____

ELEVATION — M.S.L. DATUM: _____

THETA ANGLE: _____

FIELD BOOK: 454 PAGE 71

CORNER NO. 608
SECTION 33
TOWN 17 N
RANGE 5 E



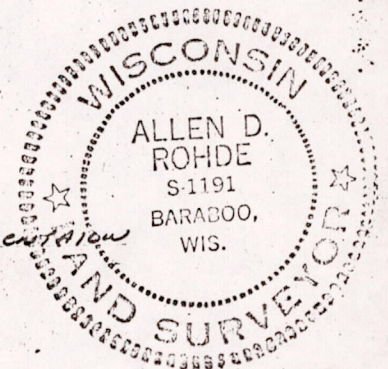
BASIS FOR MONUMENT LOCATION

(Use reverse side if necessary)

Show info such as: History of corner, with reference to Vol. and pg. dates, surveyor; exact description of monument replaced; if location computed, by taped or EDM traverse; landowner remarks, etc.

Corner established with distances & Bag's
from the Plat of Pinecreek
Corner Not Monumented
Boundary Survey by Robert Klein
lots Survey by team of Perry-Carrington
Found error in Orig Lot STR OUT & double Monumentation
All distances taped & Verified

SEAL:



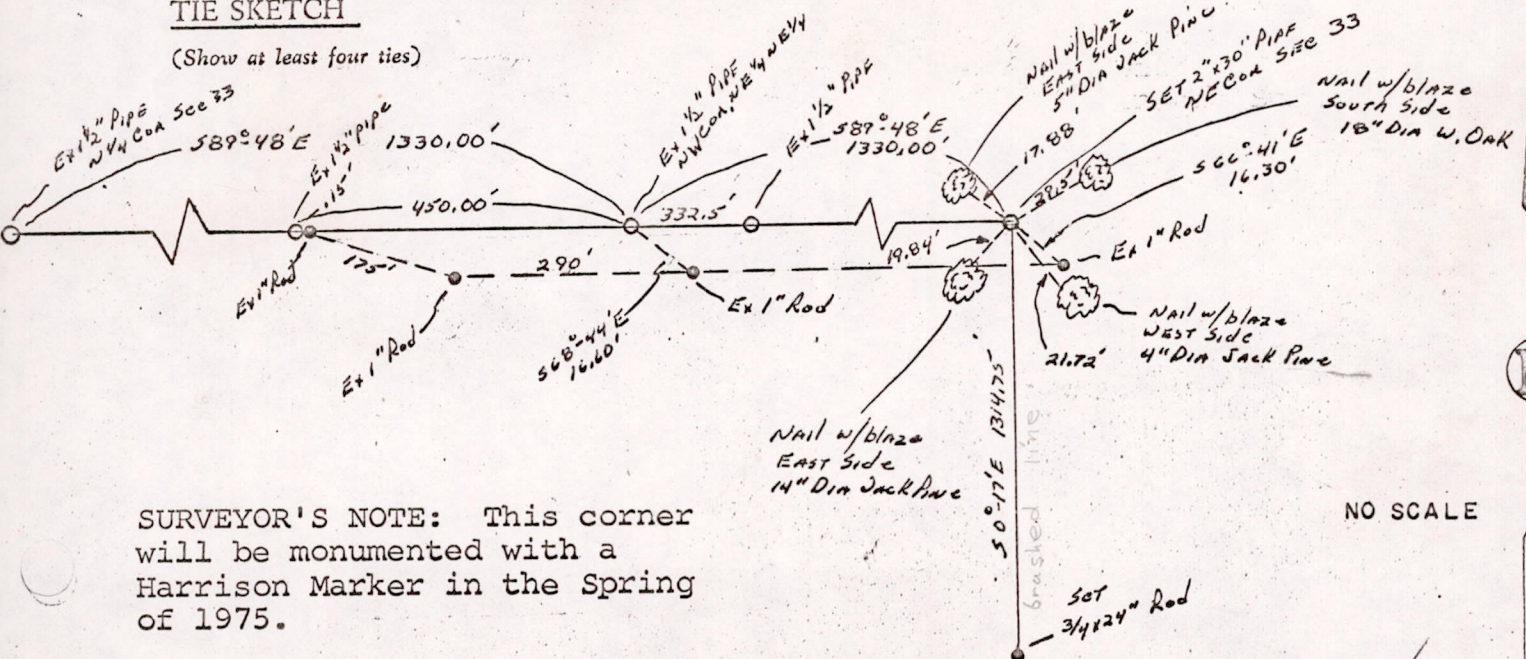
CERTIFIED CORRECT:

Allen Rohde
Registered Land Surveyor
DATE: 1-6-75

Harrison in
Everything O.K. 10/30/75 DM-SS

TIE SKETCH

(Show at least four ties)



SURVEYOR'S NOTE: This corner will be monumented with a Harrison Marker in the Spring of 1975.

NO SCALE

M1533170500003