

ADAMS COUNTY

Survey Monument Record

TYPE OF MONUMENT: 2" x 30" IRON PIPE

STATE PLANE COORDINATES: N _____

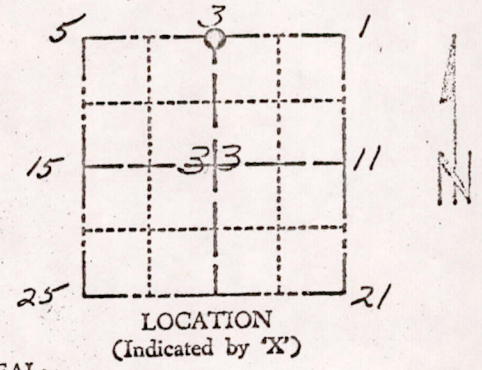
E _____

ELEVATION — M.S.L. DATUM: _____

THETA ANGLE: _____

FIELD BOOK: 454 PAGE 71

CORNER NO. 607
 SECTION 33
 TOWN 17 N
 RANGE 5 E



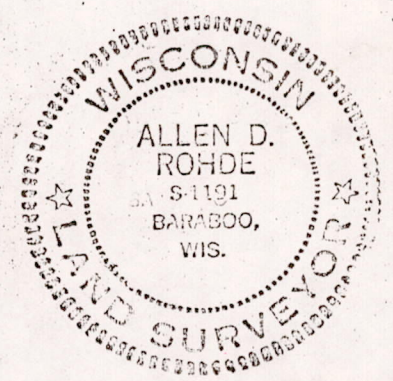
BASIS FOR MONUMENT LOCATION

(Use reverse side if necessary)

Show info such as: History of corner, with reference to Vol. and pg, dates, surveyor; exact description of monument replaced; if location computed, by taped or EDM traverse; landowner remarks, etc.

Corner Established with DISTANCES & B'g's FROM the PLAT of PINEORAMA.
 Fd 1 1/2" PIPE SET by ROBERT KLINE
 All distances TAPED & VERIFIED
 Lots SURVEYED by FIRM PERRY & CARRINGTON
 All Distances Taped & Verified

SEAL:



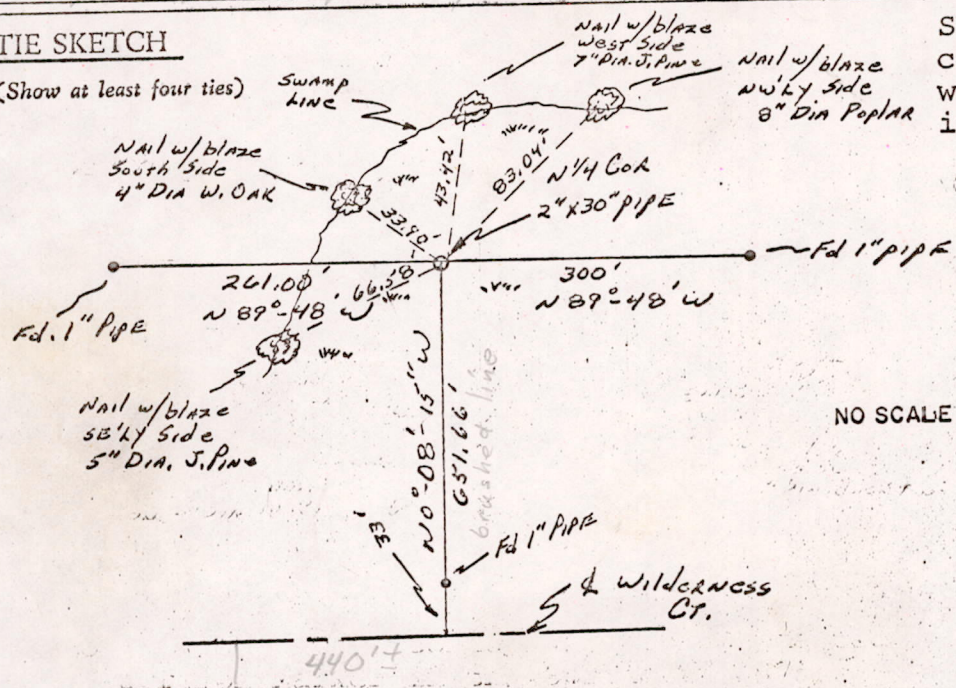
CERTIFIED CORRECT:

Allen Rohde
 Registered Land Surveyor
 DATE: 1-6-75

Harrison in swamp made - loose & sloppy
 but ties are good 10/30/75 pm-ss
 Set up 9' painted pole by Harrison

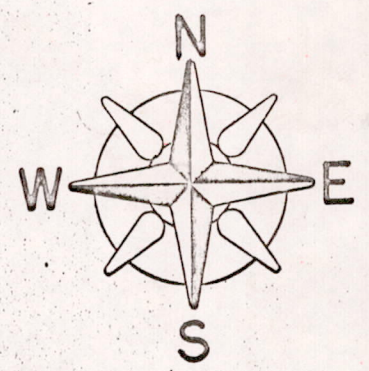
TIE SKETCH

(Show at least four ties)



SURVEYOR'S NOTE: This corner will be monumented with a Harrison Marker in the Spring of 1975.

NO SCALE



MIS 33170500004