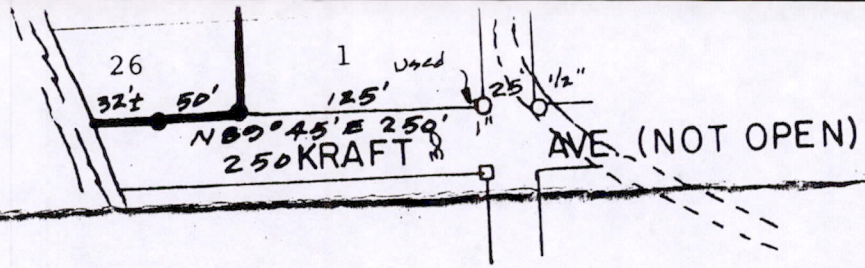


LAKE



LINE:	RECORDED AS OR NOTE:
①	Pipe is 0.49' to east of corner.
②	Pipe is 0.13' south and 0.29' east of corner.
③	Pipe is 0.06' south and 0.22' east of corner.
④	Pipe is 0.27' east of corner.
⑤	House is over lot line by 0.9' at southeast corner and 1.1' at southwest corner. Part of shed and deck is also over line.
⑥	Pipe is 0.35' to east of corner.
⑦	632'
⑧	82'
⑨	100'

House on Lot 18 is Fire No. 2206 and owned by Dot and Earl Schwartz. The stake in front of the house is in the drive (grass) and the marking fence post may interfere with auto traffic (Point ①).

filed for record this 23 day of Nov 1983 per 59.60 Wisconsin Statutes
S. Rhinaker
 ADAMS COUNTY SURVEYOR

All Maps:

- = Found iron pipe inside diameter shown.
- = Found 5/8" or 3/4" square iron rod (original survey stake).
- = Set 3/4"x24" round iron rod weighing 1.5#/lineal foot.

All found and set stakes marking the heavy line boundary are marked with 5 1/2 foot steel fences posts painted gray with a red top.

Scale 1"=100'

Surveyors Certificate:

I, Kenneth G. Carlson, registered land surveyor, hereby certify that I have surveyed, staked and mapped the shown parcels and have complied with the provisions of A-E 5 Wis. Adm. Code to the best of my knowledge and belief.

661



Kenneth G. Carlson
 Oct 19, 1983

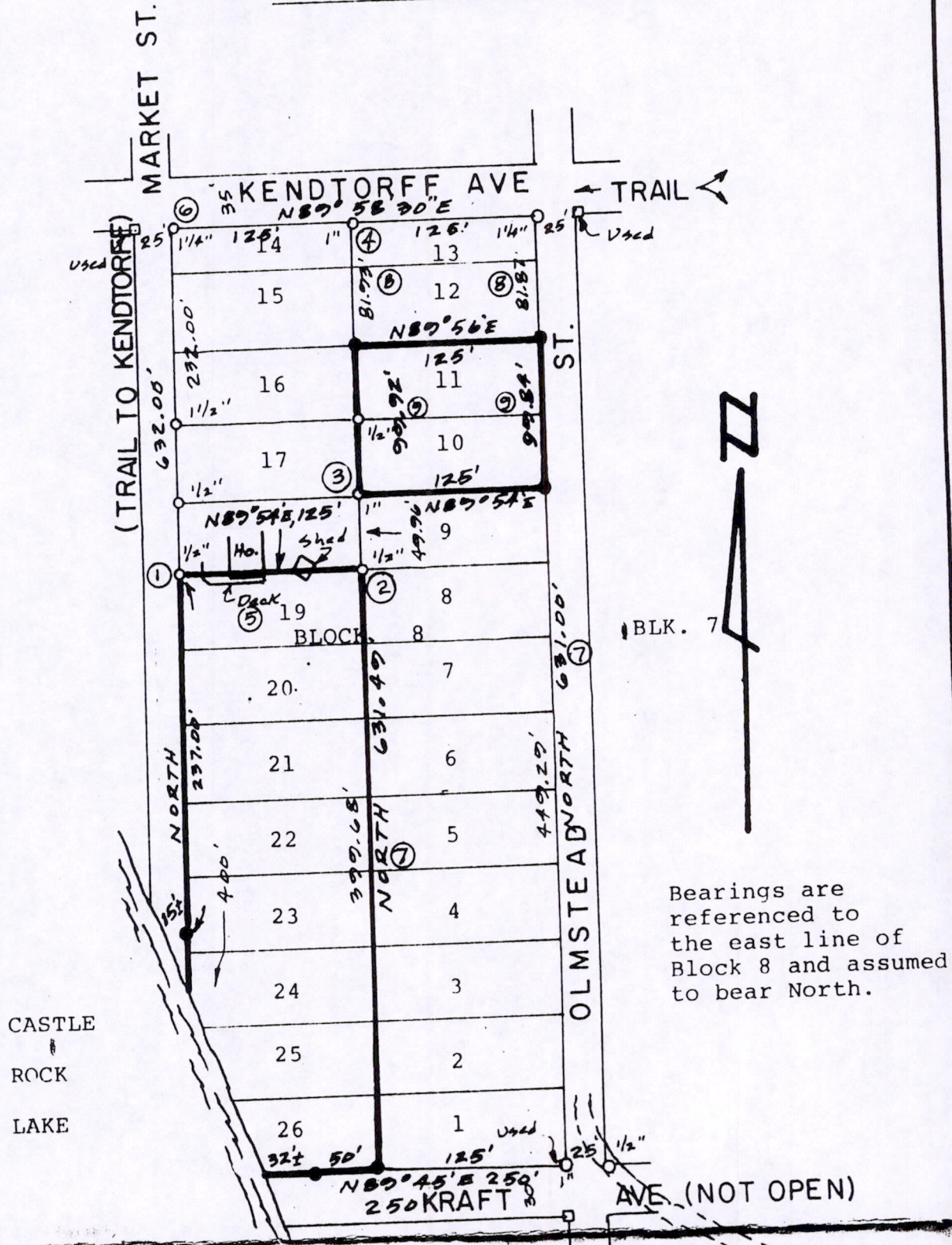
TOLERANCES (EXCEPT AS NOTED)	PLAT OF SURVEY- DELLWOOD- Adams Co.		
DECIMAL	SCALE	DRAWN BY	
±		APPROVED BY	
FRACTIONAL	TITLE		
±	for Wisconsin River Power Company		
ANGULAR	DATE	DRAWING NUMBER	
±		7&18&19-17-5	

Pos 19170501002

19-11

DELLWOOD

BLOCK 8, FOURTH ADDITION



LINE:	RECORDED AS	OR NOTE:
①		Pipe is 0.49' to east of corner.
②		Pipe is 0.13' south and 0.29' east of corner.
③		Pipe is 0.06' south and 0.22' east of corner.
④		Pipe is 0.27' east of corner.
⑤		House is over lot line by 0.9' at southeast corner and 1.1' at southwest corner. Part of shed and deck is also over line.
⑥		Pipe is 0.35' to east of corner.
⑦		632'
⑧		82'
⑨		100'

Pos 19170501002

House on Lot 18 is Fire No. 2206 and owned by Dot and Earl Schwartz. The stake in front of the house is in the drive (grass) and the marking fence post may