

Scott -
 thought you
 may like a copy
 of Stormoen's Sub.
 Betty K.

Surveyor's Note:
 There is a considerable discrepancy of the measured mile between
 Linshan & Dover. It is much longer on C.T.M.'s than it is on Market St.
 However existing monuments from original Delaware Plat governed on Market St.
 as well as some buildings on C.T.M.'s the distance was proportioned
 it was the judgment of surveyor that the drawing represents an
 equitable solution.
 Max O. Andrus
 S-2-89

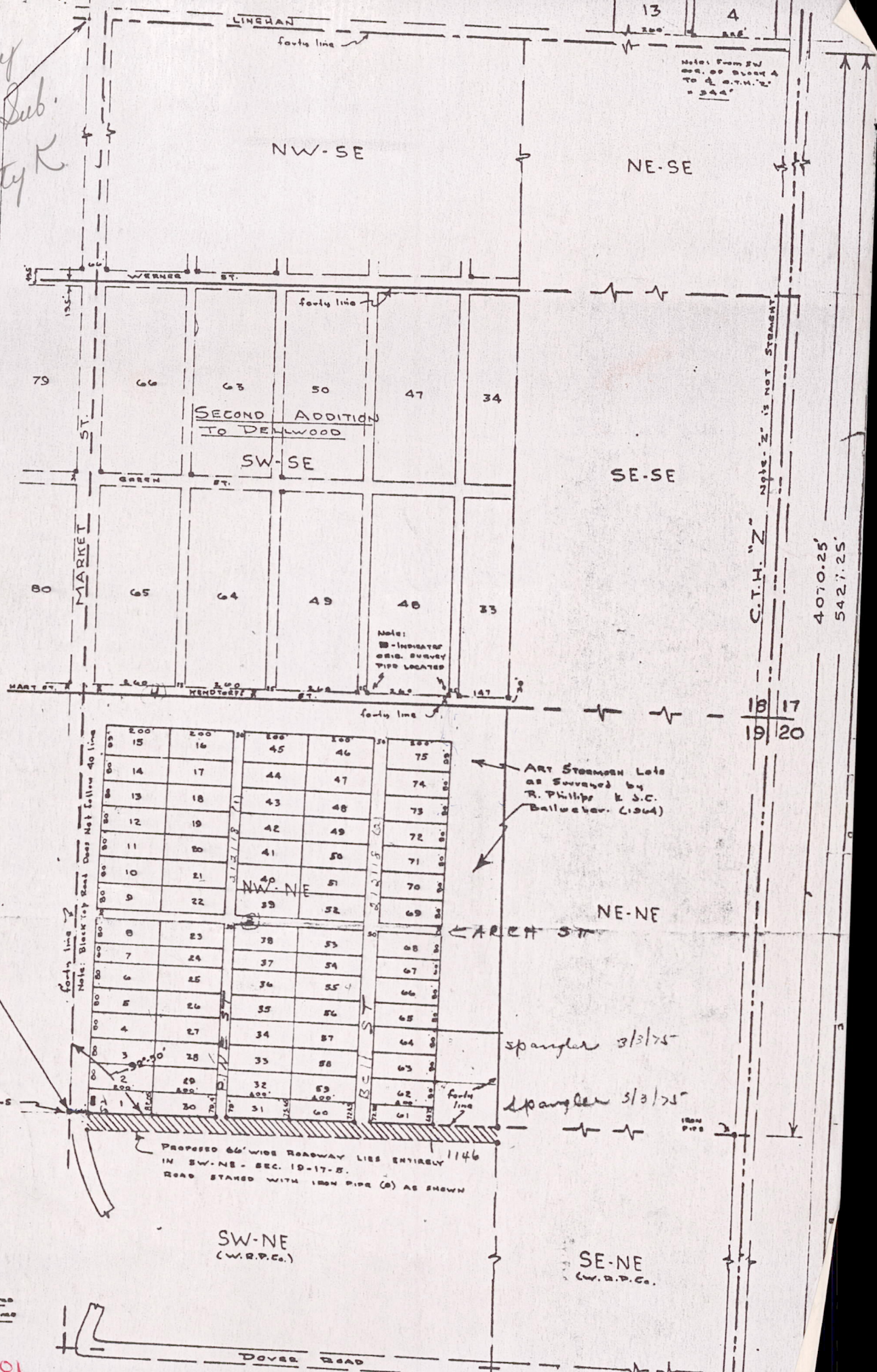


EXHIBIT 'A'
 SEC. 19-17-5
 W.R.P. Co.
 Scale 1"=200'
 Drawn by: M.O. Andrus
 Survey by: M.O. Andrus
 May 25, 1944

PGS. 191705 | 1001