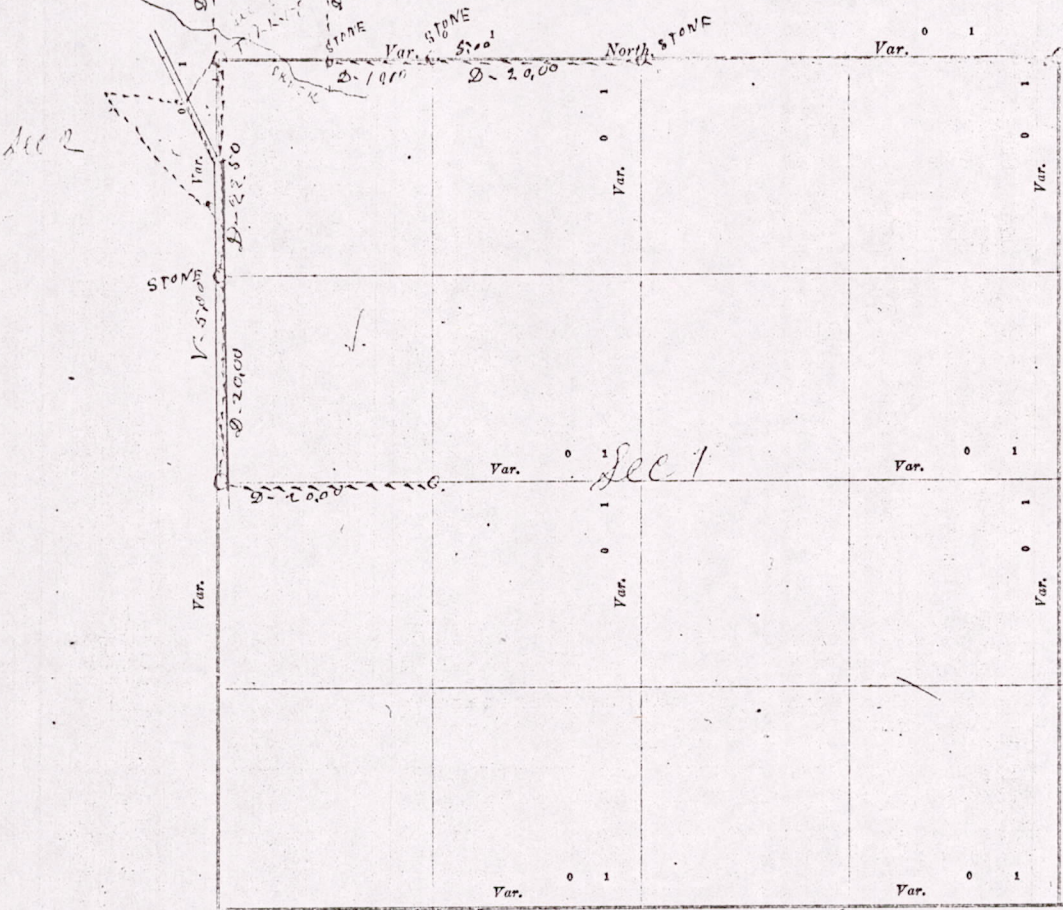


CERTIFICATE OF SURVEY.

STATE OF WISCONSIN, }
 ADAMS COUNTY }
 I, M. L. Smith Surveyor, in and for the County and State aforesaid, do hereby certify that I have surveyed and subdivided Section 1 Township 17 North of Range 6 East of 4th Principal Meridian, as represented by the courses and distances on the following plat, and annexed field-notes of survey:
 Established the center of the section at the point of intersection of straight quarter lines.
 Established quarter-quarter corners upon the section boundary at proportional distances between known section and quarter section corners, according to the original field-notes of the Government survey.
 Established all lost corners at proportionate distances between known corners, according to original field-notes of the Government survey:



Plat of Section 1-36-22, Township 17-R-6-E North, Range 5-R-C East of 4th Principal Meridian. Scale, 80 chains to 6 inches. The figures in red ink are the lengths of the lines as stated in the field-notes of the Government survey.

Declination of the Magnetic Meridian from the True Meridian _____ East.
 Surveyed and subdivided this 30 & 31 day of October A. D. 1912, in accordance with the State Laws and Instructions of the Commissioner of the General Land Office, and recorded on pages _____ of Register in the County Surveyor's office.
 WITNESS my hand this 31 day of October A. D. 1912.

M. L. Smith County Surveyor.

The above work was done at the request of the ^{man} on the old moor Place and others, on sections 1-2- and 36.

M. L. Smith County Surveyor

MIS01170600004

[Handwritten notes on the right margin, partially illegible]

