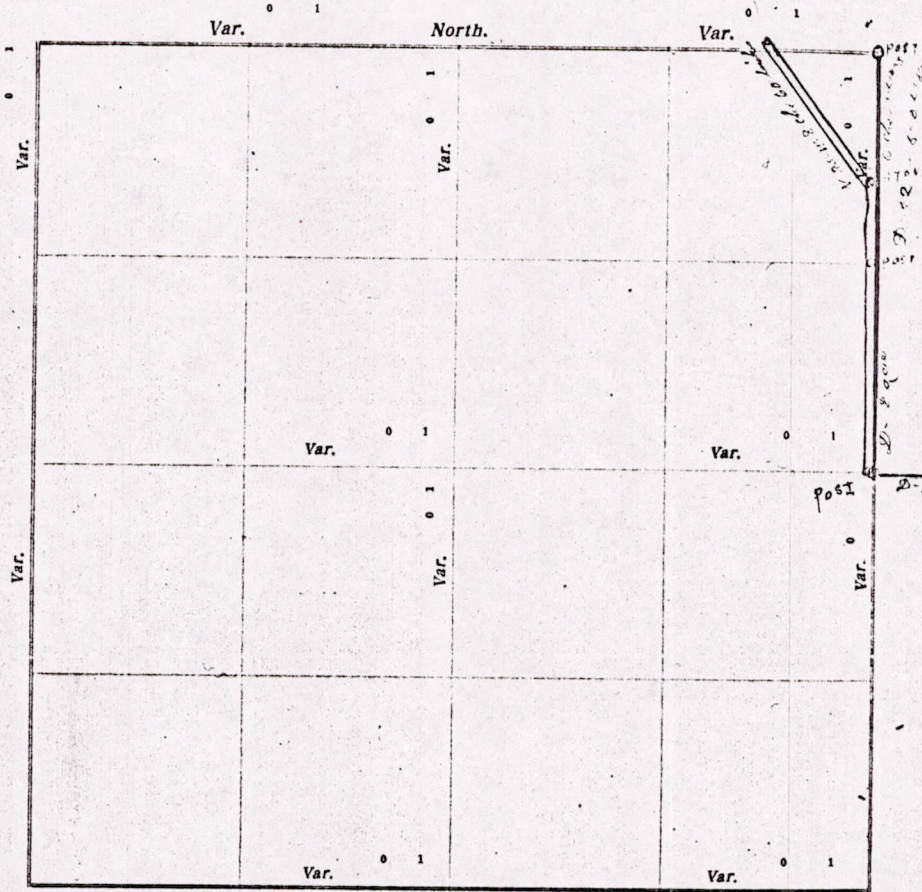


29

CERTIFICATE OF SURVEY.

STATE OF WISCONSIN, } ss. M. L. Smith County Surveyor, in and for the County and State aforesaid, hereby certify that I have surveyed and subdivided Section 1-2 Township 17 North of Range 6 East of 4th Principal Meridian, as represented by the courses and distances on the following plat, and annexed field-notes of survey:
 Established the center of the section at the point of intersection of straight quarter lines.
 Established all quarter-quarter corners upon the section boundary at proportional distances between known section and quarter section corners, according to the original field-notes of the Government survey.
 Established all lost corners at proportionate distances between known corners, according to original field-notes of the Government survey.



Plat of Section 1-2, Township 17 North, Range 6 East of 4th Principal Meridian. Scale, 80 chains to 6 inches. The figures in red ink are the lengths of the lines as stated in the field-notes of the Government survey.

Declination of the Magnetic Meridian from the True Meridian _____ East.

Surveyed and subdivided 12th day of August A. D. 1924, in accordance with the State Laws and Instructions of the Commissioner of the General Land Office, and recorded on pages _____ of Register in the County Surveyor's office.

WITNESS my hand this 24th day of August A. D. 1924.

M. L. Smith County Surveyor.

The above work was done at the request of the Town Board of the Town of Adams W. J. Brinell chair

MISO117060005

DESCRIPTION of Section, Quarter Section and Quarter-quarter Section Corners of Section

Township _____ North, Range _____ East of _____ Principal Meridian.

129

N. B. - The variation of needles adopted in establishing corners is _____

No.	Government Corners	Bearing Trees	In. dia.	Courses they bear	Links Distant	Bearing Trees	In. dia.	Courses they bear	Links Distant
1	N. W. Sec. cor. Identified								
2	N. E. Sec. cor. Identified	<i>new Blk oak</i>	<i>22</i>	<i>S-12-W</i>	<i>29 1/2</i>				
3	S. E. Sec. cor. Identified								
4	S. W. Sec. cor. Identified								
5	N. 1/4 Sec. cor. Identified								
6	E. 1/4 Sec cor. Identified								
7	S. 1/4 Sec. cor. Identified								
8	W. 1/4 Sec. cor. Identified								
Subdivision Corners.									
1	Center 1/4 Sec. cor.								
2	North 1/4-1/4s N. W. qr.								
3	East 1/4-1/4s N. W. qr.								
4	South 1/4-1/4s N. W. qr.								
5	West 1/4-1/4s N. W. qr.								
6	Center 1/4-1/4s N. W. qr.								
7	North 1/4-1/4s N. E. qr.								
8	East 1/4-1/4s N. E. qr.								
9	South 1/4-1/4s N. E. qr.								
10	Center 1/4-1/4s N. E. qr.								
11	East 1/4-1/4s S. E. qr.								
12	South 1/4-1/4s S. E. qr.								
13	West 1/4-1/4s S. E. qr.								
14	Center 1/4-1/4s S. E. qr.								
15	South 1/4-1/4s S. W. qr.								
16	West 1/4-1/4s S. W. qr.								
17	Center 1/4-1/4s S. W. qr.								

NAMES OF SWORN ASSISTANTS.

CHAINMEN

FLAGMEN

AXMEN

Edward Warcola
Frank Vobrial

MINUTES.

Commencing at the Identified Northeast corner of section 2-D-17-K-6-6 and run South on section line 22 chains & 58 links & set Post. Then South 20 chain to the quarter Post, which I established from a Post known to me to be correct 20-12 1/2 links east from said quarter Post. Then ran the angling Highway, which starts 6 chains & 72 links south from the Northeast corner of section 2, and running thence North 35 Degrees West 8 chains & 60 links to center of Highway 21

M. C. Smith county Surveyor

MIS01170600005