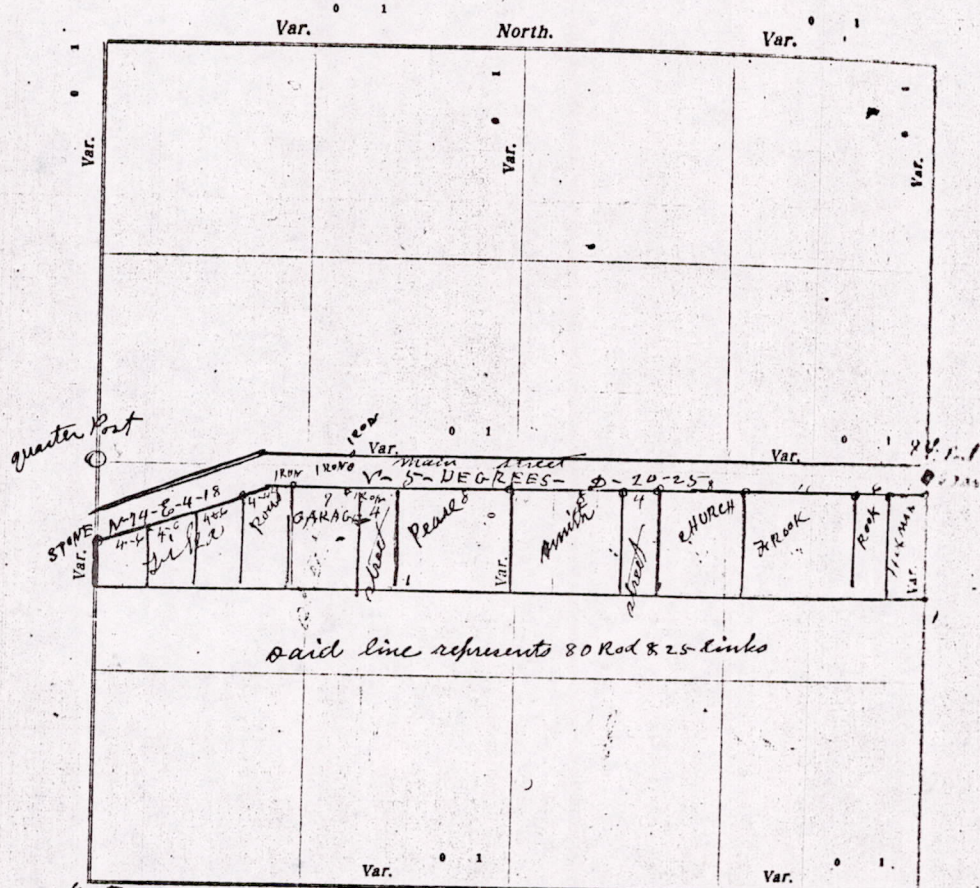


# CERTIFICATE OF SURVEY.

STATE OF WISCONSIN, )  
ADAMS COUNTY, ) ss.

*M. C. Smith County* Surveyor, in and for the County and State aforesaid, hereby certify that I have surveyed and subdivided Section 5 Township 17 North of Range 6 East of 2 Principal Meridian, as represented by the courses and distances on the following plat, and annexed field-notes of survey:

- Established the center of the section at the point of intersection of *straight* quarter lines.
- Established all quarter-quarter corners upon the section boundary at proportional distances between known section and quarter corners, according to the original field-notes of the Government survey.
- Established all lost corners at proportionate distances between known corners, according to original field-notes of the Government survey.



Plat of Section 5 Township 17 North, Range 6 East of 4<sup>th</sup> Principal Meridian. Scale, 40 chains to 1 inch. The figures in red ink are the lengths of the lines as stated in the field-notes of the Government survey.

Declination of the Magnetic Meridian from the True Meridian \_\_\_\_\_ East.  
Surveyed and subdivided 12<sup>th</sup> Day July A. D. 1923, in accordance with the State Laws and Instructions of the Commissioner of the General Land Office, and recorded on pages \_\_\_\_\_ of Register in the County Surveyor's office.  
WITNESS my hand this 12<sup>th</sup> day of July A. D. 1923.

*M. C. Smith County*  
said work was done at the request of the Village Board to make Main street the width of 4 rods

*M. C. Smith County* Surveyor

MIS05170600007



