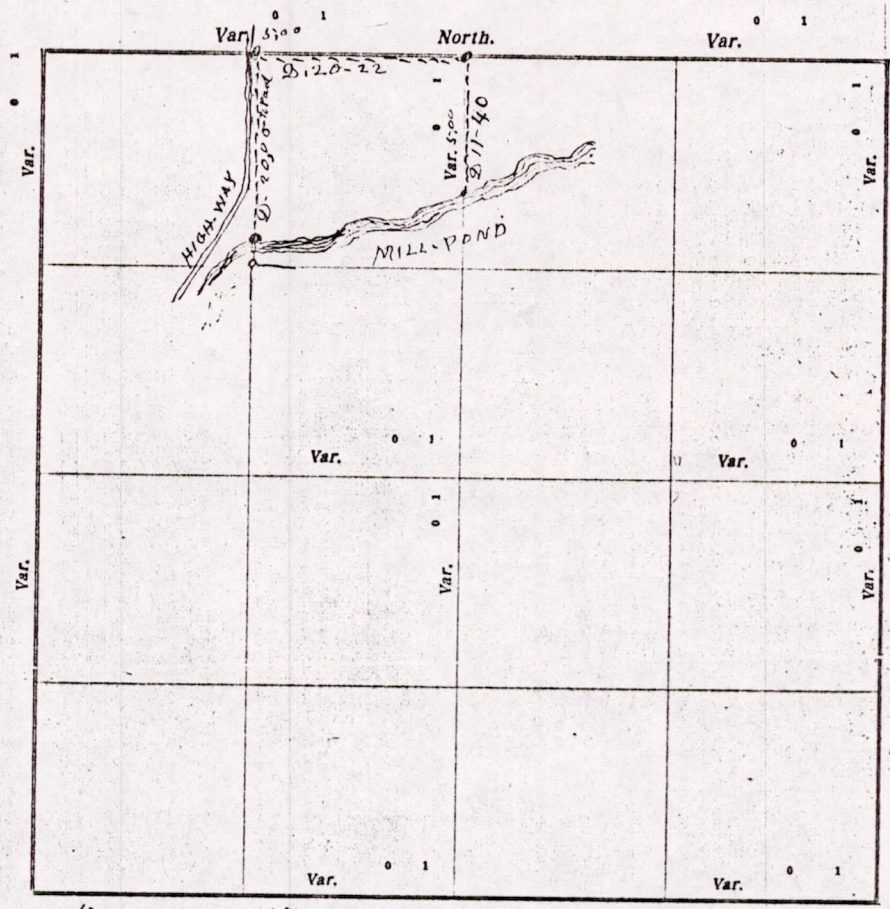


CERTIFICATE OF SURVEY.

STATE OF WISCONSIN, } ss. M. L. Smith Surveyor, in and for the County and State aforesaid, do
 ADAMS COUNTY. }
 hereby certify that I have surveyed and subdivided Section 6 Township 17 North of Range 6 East of 4th
 Principal Meridian, as represented by the courses and distances on the following plat, and annexed field-notes of survey:
 Established the center of the section at the point of intersection of straight quarter lines.
 Established all quarter-quarter corners upon the section boundary at proportionate distances between known section and quarter section
 corners, according to the original field-notes of the Government survey.
 Established all lost corners at proportionate distances between known corners, according to original field-notes of the Government survey:



Plat of Section 6, Township 17 North, Range 6 East of 4th Principal Meridian. Scale, 80 chains to 6 inches. The figures in red ink are the lengths of the lines as stated in the field-notes of the Government survey.

Declination of the Magnetic Meridian from the True Meridian _____ East.
 Surveyed and subdivided this 12 day of July A. D. 1915, in accordance with the State Laws and Instructions of
 the Commissioner of the General Land Office, and recorded on pages _____ of Register in the County Surveyor's office.

WITNESS my hand this 12th day of July A. D. 1915.
M. L. Smith County Surveyor.

The above work was done at the request of Adolph Saliskey

MS05170600012

DESCRIPTION of Section, Quarter Section and Quarter-quarter Section Corners of Section 14
 Township _____ North, Range _____ East of _____ Principal Meridian.

N. B. - The variation of needle adopted in establishing corners is _____

No.	Government Corners	Bearing Trees	In. dia.	Courses they bear	Links Distant	Bearing Trees	In. dia.	Courses they bear	Links Distant
1	N. W. Sec. cor. Identified								
2	N. E. Sec. cor. Identified								
3	S. E. Sec. cor. Identified								
4	S. W. Sec. cor. Identified								
5	N. 1/4 Sec. cor. Identified								
6	E. 1/4 Sec. cor. Identified								
7	S. 1/4 Sec. cor. Identified								
8	W. 1/4 Sec. cor. Identified								
SUBDIVISION CORNERS.									
1	Center 1/4 Sec. cor.								
2	North 1/4-1/4s N. W. qr.								
3	East 1/4-1/4s N. W. qr.								
4	South 1/4-1/4s N. W. qr.								
5	West 1/4-1/4s N. W. qr.								
6	Center 1/4-1/4s N. W. qr.								
7	North 1/4-1/4s N. E. qr.								
8	East 1/4-1/4s N. E. qr.								
9	South 1/4-1/4s N. E. qr.								
10	Center 1/4-1/4s N. E. qr.								
11	East 1/4-1/4s S. E. qr.								
12	South 1/4-1/4s S. E. qr.								
13	West 1/4-1/4s S. E. qr.								
14	Center 1/4-1/4s S. E. qr.								
15	South 1/4-1/4s S. W. qr.								
16	West 1/4-1/4s S. W. qr.								
17	Center 1/4-1/4s S. W. qr.								

NAMES OF SWORN ASSISTANTS.

CHAINMEN	FLAGMEN	AXMEN

MINUTES.

commencing at the Proven ^{8th} post on the Town line on the north side of section 5-~~5~~ 17-R-6-E. and ran East at 5-D-V 20 chains & 22 links to the identical quarter post on the north side of the section. Then south from the identical quarter post at 5-D-V .11 chains & 140 links to the edge of the water of the Mill Pond and set Post. Then started at the same 8th Post on the Town line and ran south on the 8th line 20 chains to edge of Mill Pond

M. B. Smith County Surveyor

MISSISSIPPI 70600012