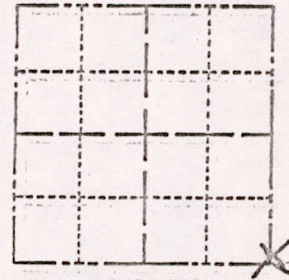


168

Survey Monument Record

TYPE OF MONUMENT: 30" HARRISON NAIL
 STATE PLANE COORDINATES: N _____
 E _____
 ELEVATION — M.S.L. DATUM: _____
 THETA ANGLE: _____
 FIELD BOOK: 106? PAGE ?

SECTION 6
 TOWN 17
 RANGE 6



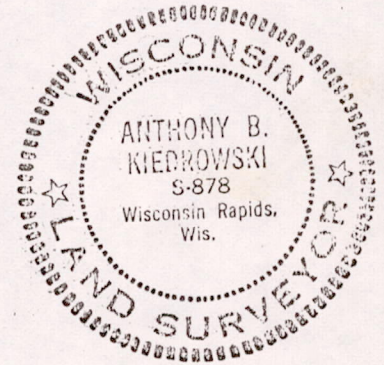
LOCATION
(Indicated by 'X')

BASIS FOR MONUMENT LOCATION

(Use reverse side if necessary)

Show info such as: History of corner, with reference to Vol. and pg, dates, surveyor; exact description of monument replaced; if location computed, by, taped or EDM traverse; landowner remarks, etc.

SEAL:



Found nail and set monument

August 1, 1972

Anthony B. Kiedrowski R.L.S. 878

Location of nail verified as section corner by retracement of adjoining platted subdivisions. Could not install monument at this time because of concrete pavement.

*cap with chiseled cross
 Took 1 new tie
 Everything O.K. 10/12/70 DM-SS*

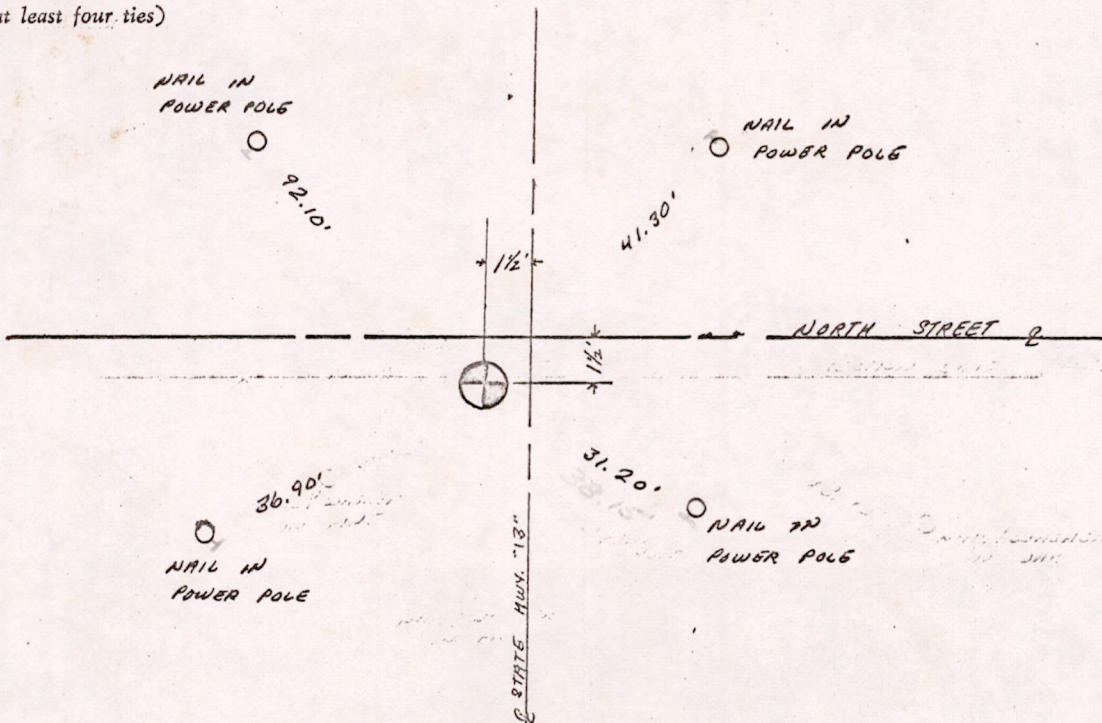
CERTIFIED CORRECT

Anthony B. Kiedrowski
 Registered Land Surveyor

DATE: _____

TIE SKETCH

(Show at least four ties)



150617060007