

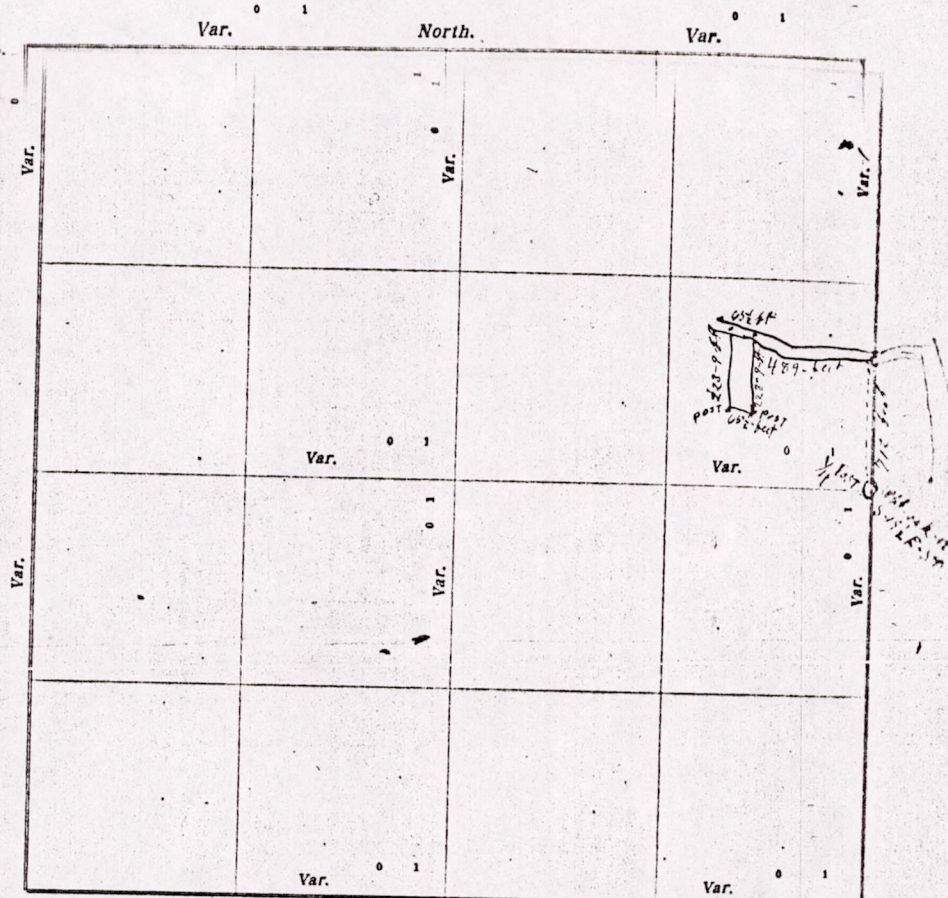
CERTIFICATE OF SURVEY.

STATE OF WISCONSIN, } ss.
ADAMS COUNTY.

I, M. B. Smith County Surveyor, in and for the County and State of Wisconsin,

hereby certify that I have surveyed and subdivided Section 6 Township 17 North of Range 6 East of 4th Principal Meridian, as represented by the courses and distances on the following plat, and annexed field-notes of survey:

Established the center of the section at the point of intersection of straight quarter lines.
Established all quarter-quarter corners upon the section boundary at proportional distances between known section and quarter corners, according to the original field-notes of the Government survey.
Established all lost corners at proportionate distances between known corners, according to original field-notes of the Government survey.



Plat of Section 6, Township 17 North, Range 6 East of 4th Principal Meridian. Scale, 80 chains to 4 inches. The figures in red ink are the lengths of the lines as stated in the field-notes of the Government survey.

Declination of the Magnetic Meridian from the True Meridian _____ East.

Surveyed and subdivided August 8th A. D. 1923, in accordance with the State Laws and Instructions of the Commissioner of the General Land Office, and recorded on pages _____ of Register in the County Surveyor's office.

WITNESS my hand this 8th day of August A. D. 1923.

M. B. Smith County Surveyor

The above work was done at the request of John D. Lindberg to get a correct description of a tract of land situated on the southeast quarter of the Northeast quarter of section 6 2-17-R-6-E which is fully described and shown on Plat on file in my office and one delivered to Mr. Lindberg. Irwin Rich now assistant

M1506170600011

