

ADAMS COUNTY

Survey Monument Record

TYPE OF MONUMENT: 30" HARRISON

STATE PLANE COORDINATES: N \_\_\_\_\_

E \_\_\_\_\_

ELEVATION — M.S.L. DATUM: \_\_\_\_\_

THETA ANGLE: \_\_\_\_\_

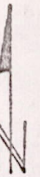
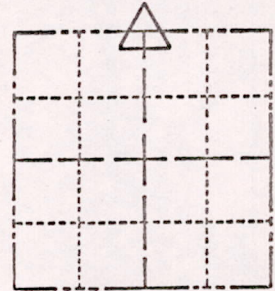
FIELD BOOK: 104 PAGE 73

CORNER NO. 41

SECTION 13

TOWN 17

RANGE 6



LOCATION  
(Indicated by 'X')

SEAL:

BASIS FOR MONUMENT LOCATION

(Use reverse side if necessary)

Show info such as: History of corner, with reference to Vol. and pg, dates, surveyor; exact description of monument replaced; if location computed, by taped or EDM traverse; landowner remarks, etc.

Found "RR" spike and set monument

August 23, 1971

Sam T. Mullen R.L.S. S-981

*Harrison O.K. 9-27-75 SS*

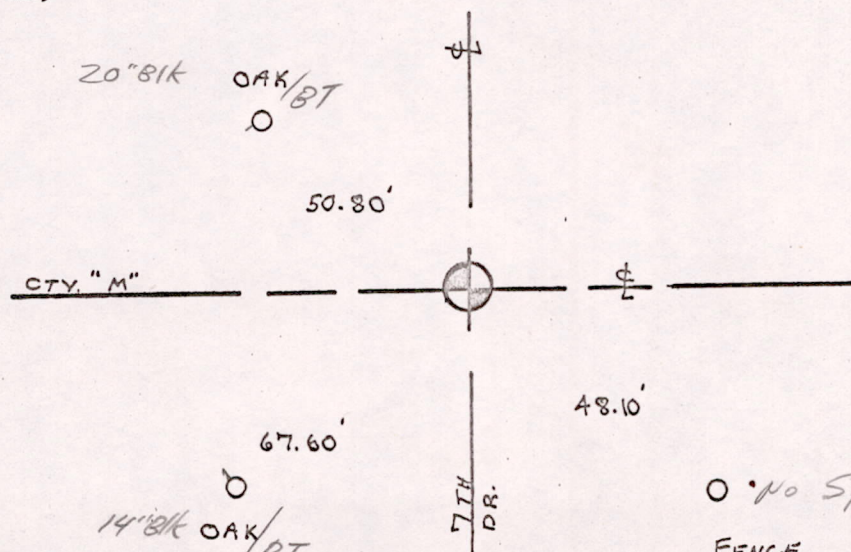
CERTIFIED CORRECT:

Registered Land Surveyor

DATE: \_\_\_\_\_

TIE SKETCH

(Show at least four ties)



SET R.R. SPIKES

O No Spike  
FENCE POST

M1813170600001