

ADAMS COUNTY

Survey Monument Record

TYPE OF MONUMENT: STANDARD HARRISON

STATE PLANE COORDINATES: N _____

E _____

ELEVATION — M.S.L. DATUM: _____

THETA ANGLE: _____

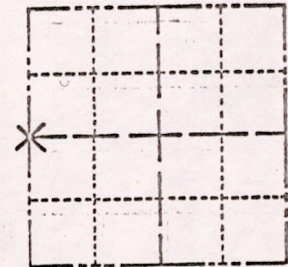
FIELD BOOK: _____ PAGE _____

544

SECTION 15

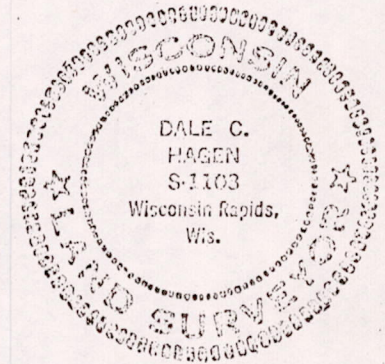
TOWN 17

RANGE 6



LOCATION
(Indicated by 'X')

SEAL:



BASIS FOR MONUMENT LOCATION

(Use reverse side if necessary)

Show info such as: History of corner, with reference to Vol. and pg, dates, surveyor; exact description of monument replaced; if location computed, by taped or EDM traverse; landowner remarks, etc.

Two existing concrete witness monuments were found, one being Easterly and one Southwesterly, indicating the location of the Quarter corner.

Excavation at the location indicated by the witness monuments revealed the existance of a 1 1/2 inch diameter iron pipe. Said pipe was replaced with a Standard Harrison Monument.

CERTIFIED CORRECT:

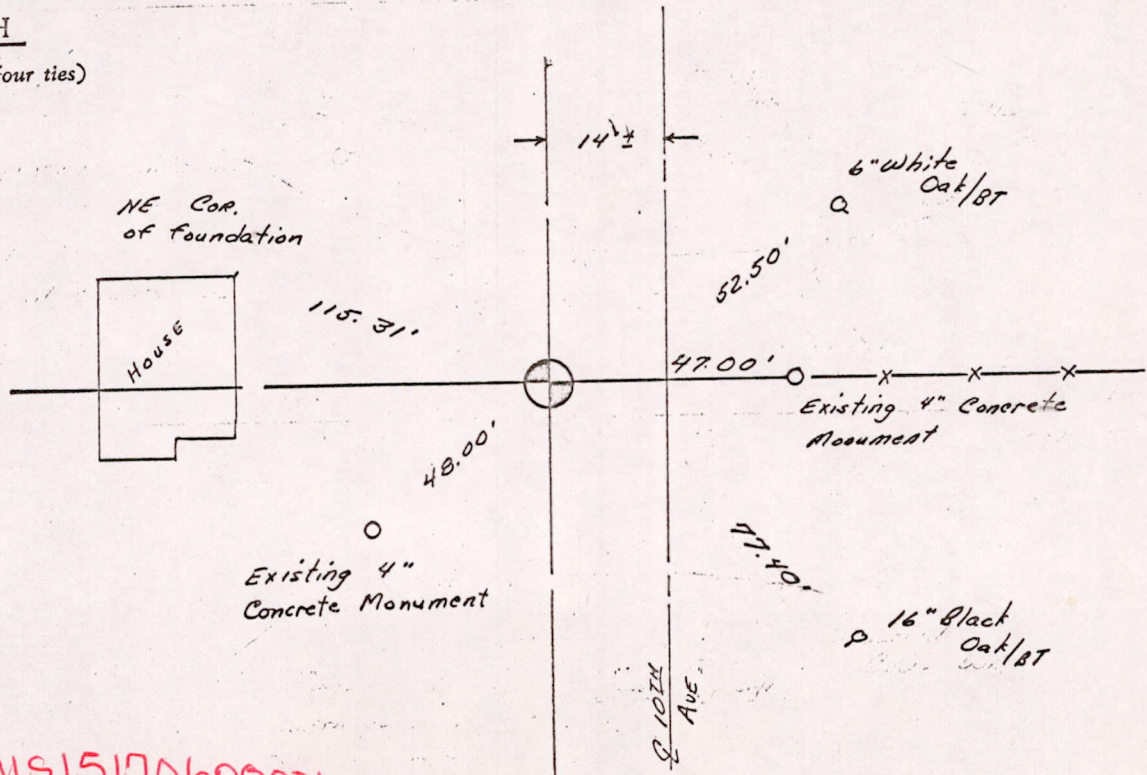
Dale C. Hagen
Registered Land Surveyor

DATE: August 19, 1974

Everything O.K.

TIE SKETCH

(Show at least four ties)



MIS15170600001