

ADAMS COUNTY

Survey Monument Record

TYPE OF MONUMENT: HARRISON MONUMENT

STATE PLANE COORDINATES: N _____

E _____

ELEVATION — M.S.L. DATUM: _____

THETA ANGLE: _____

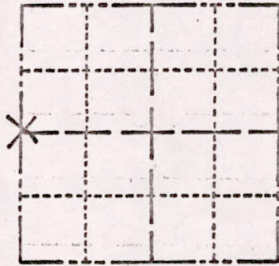
FIELD BOOK: _____ PAGE _____

CORNER NO. 421

SECTION 17

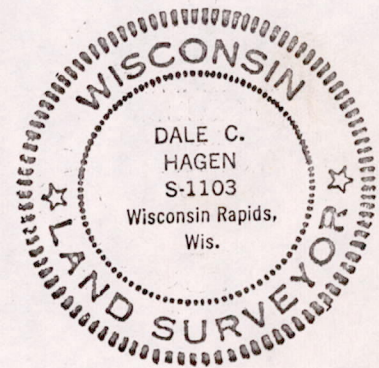
TOWN 17

RANGE 6



LOCATION (Indicated by 'X')

SEAL:



BASIS FOR MONUMENT LOCATION

(Use reverse side if necessary)

Show info such as: History of corner, with reference to Vol. and pg. dates, surveyor; exact description of monument replaced; if location computed, by taped or EDM traverse; landowner remarks, etc.

Corner relocated by retracing tie as shown on Railroad Plat.

Corner falls in Westerly right of way ditch of State Trunk Highway 13. Set Standard Harrison Monument.

CERTIFIED CORRECT:

Dale C. Hagen
Registered Land Surveyor

DATE: July 31, 1974

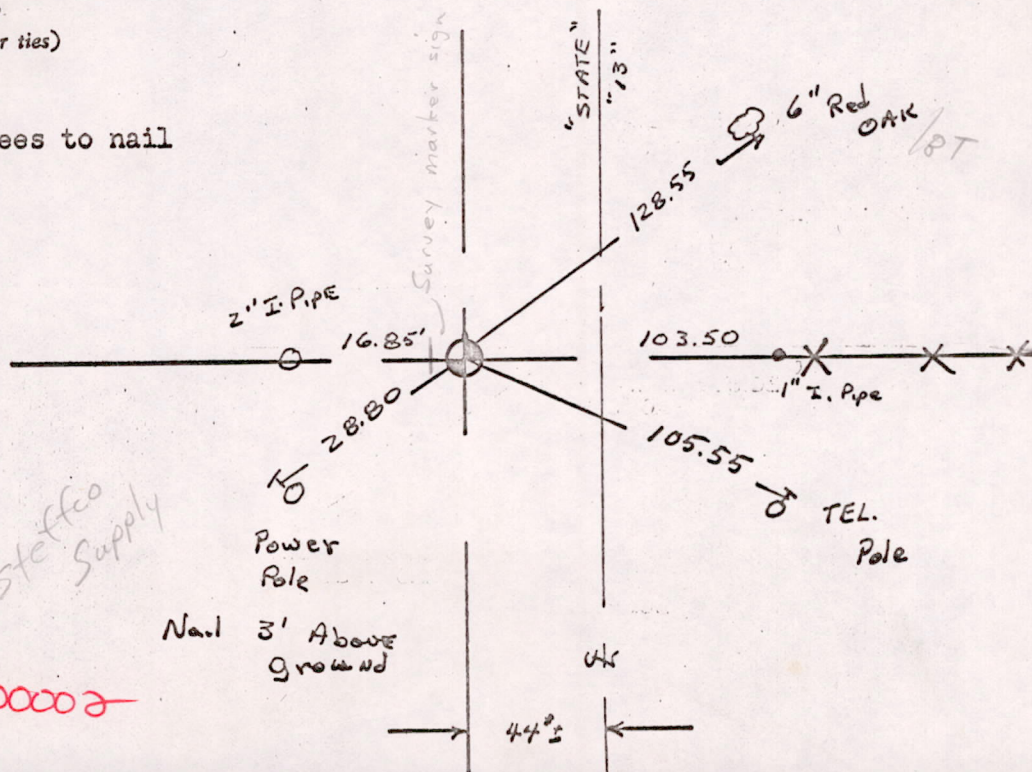
Everything O.K. 10/28/75 DM-55

TIE SKETCH

(Show at least four ties)

NOTE:

Ties in trees to nail in disc.



M1517170600002