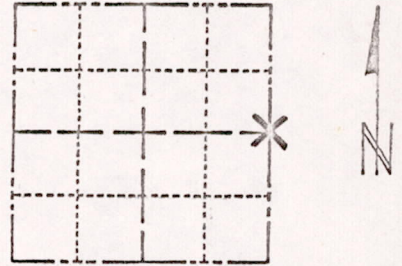


Survey Monument Record

TYPE OF MONUMENT: Standard Harrison
 STATE PLANE COORDINATES: N _____
 E _____
 ELEVATION — M.S.L. DATUM: _____
 THETA ANGLE: _____
 FIELD BOOK: /// PAGE 5

365

SECTION 17
 TOWN 17
 RANGE 6



LOCATION
(Indicated by 'X')

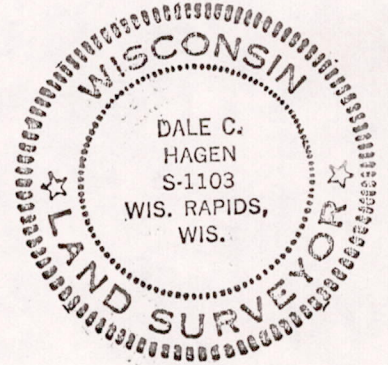
BASIS FOR MONUMENT LOCATION

(Use reverse side if necessary)

Show info such as: History of corner, with reference to Vol. and pg, dates, surveyor; exact description of monument replaced; if location computed, by taped or EDM traverse; landowner remarks, etc.

Found existing 1-inch iron pipe at proper distance from reference monument set by R. Phillips. Monument to the Northwest has been destroyed.
 Replaced with Standard Harrison Monument.

SEAL:



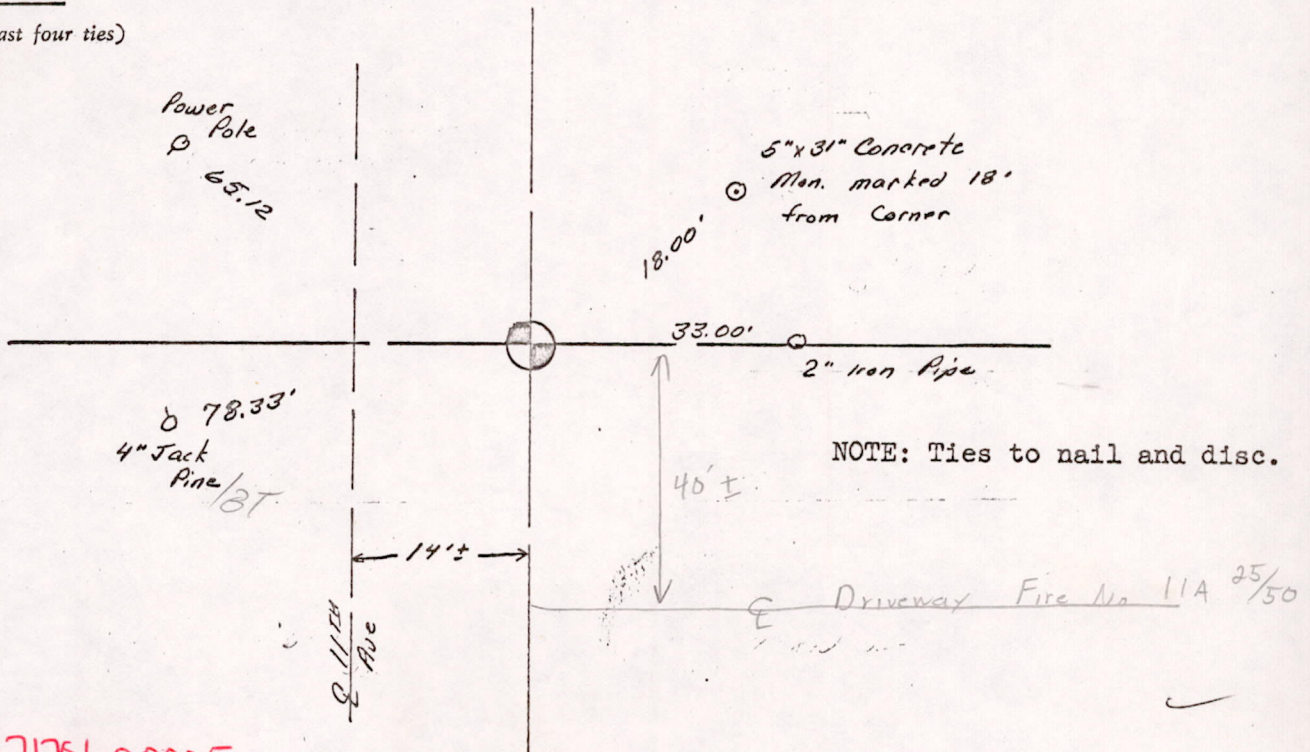
Everything O.K. 9-27-75 SS

CERTIFIED CORRECT:

Dale C. Hagen
 Registered Land Surveyor
 DATE: April 24, 1974

TIE SKETCH

(Show at least four ties)



M1517176600005