

ADAMS COUNTY

Survey Monument Record

TYPE OF MONUMENT: 30" HARRISON

STATE PLANE COORDINATES: N _____ E _____

ELEVATION — M.S.L. DATUM: _____

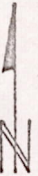
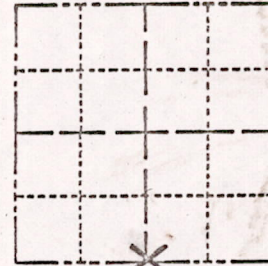
THETA ANGLE: _____

FIELD BOOK: III PAGE 7

SECTION 17

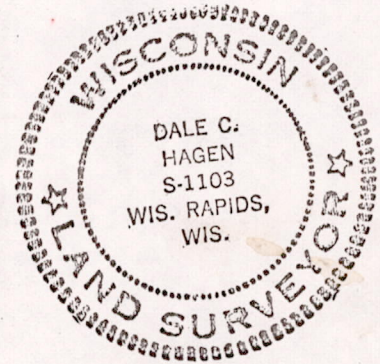
TOWN 17

RANGE 6



LOCATION (Indicated by 'X')

SEAL:



BASIS FOR MONUMENT LOCATION

(Use reverse side if necessary)

Show info such as: History of corner, with reference to Vol. and pg, dates, surveyor; exact description of monument replaced; if location computed, by taped or EDM traverse; landowner remarks, etc.

Excavation at the intersection of ancient fences yielded remnants of dug-in post. Traverse showed position fit properly rest of section.

Monumented with Standard Harrison monument.

Everything O.K. 10-18-75 SS
Tie S. O.K.

CERTIFIED CORRECT:

Dale C. Hagen

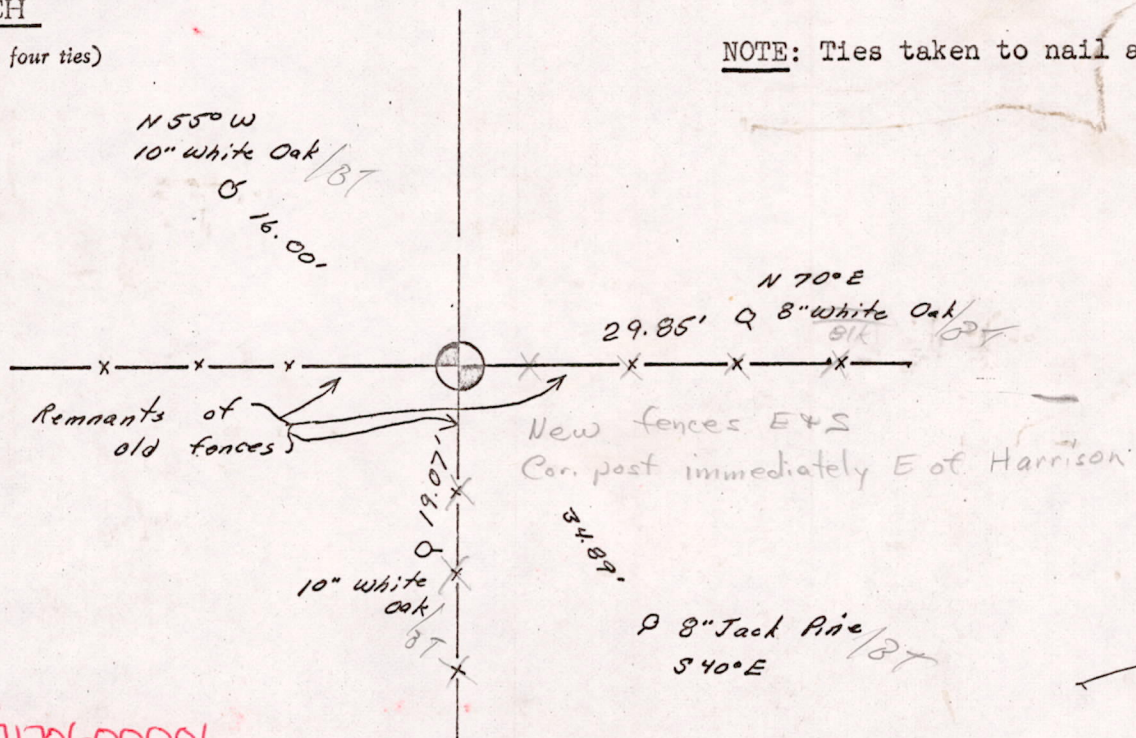
Registered Land Surveyor

DATE: April 24, 1974

TIE SKETCH

(Show at least four ties)

NOTE: Ties taken to nail and disc.



M1517170600006